

## BlueLED Bluetooth® Mouse M-BL3BB Series User's Manual

Thank you for purchasing the ELECOM M-BL3BB Series BlueLED Bluetooth® Mouse. The M-BL3BB is a wireless laser mouse that employs Bluetooth® wireless technology. It also features a resolution switch that allows you to change the mouse movement speed.

This manual describes the operating instructions and safety precautions for using the M-BL3BB Series. Ensure that you have read this manual before using the product. After reading this manual, store it somewhere safe for future reference.

\* Except in certain cases, the M-BL3BB Series is referred to as "this product" in this manual.

### ■ Meaning of symbols

	<b>WARNING</b>	Failure to observe precautions may result in serious personal injury or death due to fire, electric shock, or other causes.
	<b>CAUTION</b>	Failure to observe precautions may result in personal injury due to electric shock or other causes, and may damage other equipment.

- Prohibited action
- Mandatory action
- Situation that needs attention
- Notes and reference information
- Information that is handy to know

### Package Contents

This product's packaging contains the items listed below. Before using the product, check that all items are present. We make every effort to ensure that all products are packaged correctly. However, in the event that an item is missing or damaged, contact the retailer from whom you purchased the product.

- Mouse x1
- AAA alkaline battery x2
- Carry bag x1
- User's Manual x1

### Safety Precautions

Observe these precautions carefully to avoid personal injury, damage, fire, and other problems.

	<b>WARNING</b>
	If a foreign object (water, metal chip, etc.) enters the product, immediately stop using the product, and remove the battery from the mouse. If you continue to use the product under these conditions, it may cause a fire or electric shock.
	If an abnormality is found with this product (emission of heat, smoke or abnormal smell from the product), immediately stop using the product, shutdown the PC, and after thoroughly checking that heat from the product will not cause burns, remove the battery from the mouse. After doing this, contact the retailer from whom you purchased the product.

	<b>WARNING</b>
	Do not drop or hit this product. If this product is damaged, immediately stop using the product and turn the mouse body off, and remove the battery from the mouse. If you continue to use the product under these conditions, it may cause a fire or electric shock.
	Do not attempt to disassemble, modify or repair this product by yourself, as this may cause a fire, electric shock or product damage.
	Do not put this product in fire, as the product may burst, resulting in a fire or injury.

	<b>CAUTION</b>
	Do not place this product in any of the following environments: <ul style="list-style-type: none"><li>• In a car exposed to sunlight, a place exposed to direct sunlight, or a place that becomes hot (around a heater, etc.)</li><li>• In a moist place or a place where condensation may occur</li><li>• In an uneven place or a place exposed to vibration</li><li>• In a place where a magnetic field is generated (near a magnet, etc.)</li><li>• In a dusty place</li></ul>
	This product does not have a waterproof structure. Use and store this product in a place where the product body will not be splashed with water or other liquid. Rain, water mist, juice, coffee, steam or sweat may also cause product damage.

- When you no longer need to use this product and the battery, be sure to dispose of it in accordance with the local ordinances and laws of your area.

### ■ Batteries

	<b>CAUTION</b>
	Use AAA alkaline batteries, AAA manganese batteries, or AAA nickel hydride storage batteries with this product.
	If this product will be unused for a long period of time, remove the battery to avoid battery leakage and failure.

### ■ Cleaning the Mouse

If the product body becomes dirty, wipe it with a soft, dry cloth.

- Use of a volatile liquid (paint thinner, benzene, alcohol, etc.) may affect the material quality and colour of the product.

### Cautions for Wireless Equipment

This product is wireless equipment using the entire range of the 2.4 GHz band and it is possible to avoid the band of mobile object identification systems. GFSK is used for the radio wave method. The interference distance is 10 m.

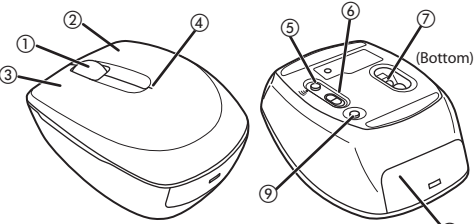
The 2.4 GHz band is also used by medical equipment, Bluetooth, and wireless LAN equipment conforming to the IEEE802.11b/11g/11n standard.

- Before using this product, check that there are no other "radio stations" operating nearby.
- If electromagnetic interference occurs between this product and other "radio stations", move this product to another location or stop using this product.

\* Other "radio stations" refer to industrial, scientific and medical devices using the 2.4 GHz band like this product, other radio stations of this type, licensed radio station premises for mobile object identification system that is used in factory production lines, certain non-licensed low power radio stations and amateur radio stations.

	<b>WARNING</b>
	<ul style="list-style-type: none"><li>• Do not use this product with a device that may have a serious function or influence. There are rare cases where an external radio wave at the same frequency or the radio wave emitted from a mobile phone causes this product to malfunction, slow down, or fail to operate.</li><li>• Do not use this product in a hospital or other locations where the use of radio waves is prohibited. The radio waves of this product may affect electronic and medical devices (e.g. pacemaker).</li><li>• The use of a wireless mouse in an aircraft is prohibited by aviation law because doing so may interfere with flight safety. Turn off the power of the mouse body before boarding an aircraft and do not use it in the aircraft.</li></ul>
	* ELECOM is not liable for any accident or social damages incurred by the failure of this product.

### Part Names



<b>① Wheel</b>	The wheel can be turned back and forward with your finger or pressed like a button to operate the PC.
<b>② Right button</b>	Used for right-click operation.
<b>③ Left button</b>	Used for left-click operation.
<b>④ Remaining battery level indicator lamp/ Resolution switch indicator lamp/pairing indicator lamp</b>	<ul style="list-style-type: none"><li>• Turns red when the mouse is in a pairing standby state.</li><li>• Indicates when to replace the batteries.</li><li>* When a battery has been inserted, if there are sufficient remaining battery levels, it will illuminate in red for a certain period of time. If the remaining battery level becomes low during use, it will flash in red for a certain period of time.</li><li>• Flashes when the resolution (mouse cursor speed) is changed.</li><li>* Flashes twice when switching from 800 to 1600</li><li>Flashes once when switching from 1600 to 800</li></ul>
<b>⑤ Pairing button</b>	Pairs the mouse with a PC Bluetooth module or a Bluetooth adapter.
<b>⑥ Power switch</b>	Used to turn the mouse body on and off.
<b>⑦ Optical sensor</b>	Lights blue when the mouse is powered on. When the mouse body is moved, this sensor detects mouse movement. * Avoid looking directly at the light of the sensor as doing so may cause eye damage.
<b>⑧ Battery cover</b>	This cover is removed to install batteries. There is battery housing inside, batteries are inserted there.
<b>⑨ Resolution switch</b>	Switches the resolution (mouse cursor speed) between 800 and 1600 each time the button is pressed.

### Initial Setup Procedure

When using this product for the first time, operate and configure this product and the PC in the order shown below.

- To use this product, your PC must support the Bluetooth HID profile or have a Bluetooth adapter connected.
- Do not remove your existing mouse until this product is successfully connected. You need to use your existing mouse to configure the PC.

<b>1 Insert the batteries</b>	↓
<b>2 Turning on the mouse</b>	↓
<b>3 Pair the mouse with the PC</b>	↓
<b>4 Check mouse operation</b>	↓

\* Refer to the back of this sheet.

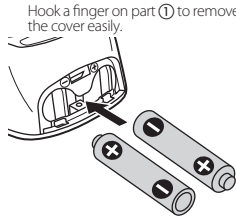
### 1 Installing / Replacing the Battery

Before using this product, install two AAA batteries in the mouse body.

#### 1 Remove the battery cover.

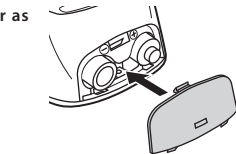


#### 2 Insert the batteries.



- Make sure that the polarity is correct.

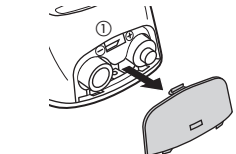
#### 3 Install the battery cover as before.



### ■ Replacing the Battery

When batteries are drained, replace them following the instructions below.

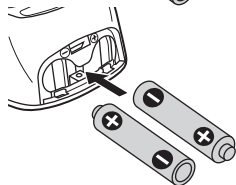
#### 1 Remove the battery cover.



#### 2 Remove the batteries.

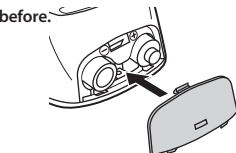


#### 3 Insert the battery.



- Do not mix different types of batteries or use old batteries with new batteries to avoid battery leakage and failure.

#### 4 Install the battery cover as before.



### 2 Turning on the mouse

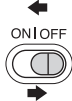
When using this product, turn the mouse body power on.

#### 1 Slide the power switch to the ON position.

The remaining battery level indicator lamp is illuminated in red for a certain period.



- When not using this product, turn the mouse body off to save battery power.  
Slide the power switch to the OFF position.



### ■ Restoring from sleep state

Click the right mouse button.

- To reduce battery drain, the mouse enters sleep mode automatically if it is left without being operated for a certain period of time with the power or switch turned on.

### 3 Pairing the mouse with the PC

To connect this product to the PC using Bluetooth, you need to pair the product with the PC.

- Pairing involves registering Bluetooth devices (in this case, the mouse and the PC) with each other, and authorising a connection with a registered device.
- Use your existing mouse or touch pad to operate the PC until the pairing process is completed successfully.

### When using Windows®

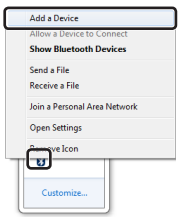
This section describes the procedure when using the standard Windows® Bluetooth function.

#### ■ Windows® 7 and Windows Vista® SP2

\* Screen appearance may change depending on operating system, but the procedure is the same.

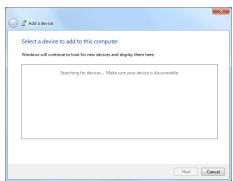
#### 1 In the notification area, click the Bluetooth icon ( ) and click [Add a Device].

The [Add a Device] window is displayed.

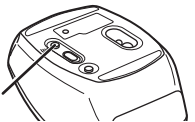


- If the Bluetooth icon is displayed in the notification area in Windows® 7, right-click the Bluetooth icon and then click [Add a Device].
- If no icon is displayed, click the [Start] button, click [Control Panel], and then click [Add a Device].

#### 2 Press the pairing button on this product.



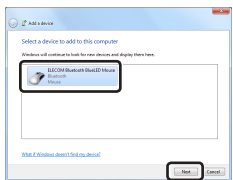
The pairing indicator lamp turns on during the pairing procedure and turns off when the procedure is complete (step 4). Pairing button



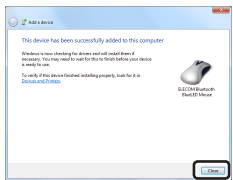
- If this product is not displayed in the list, check that its power is turned on, press the pairing button, and then click [Search Again].

#### 3 Click [ELECOM Bluetooth BlueLED MOUSE] and then click [Next].

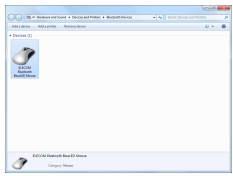
Product registration starts.



#### 4 Click [Close].



[ELECOM BLUETOOTH LASER MOUSE] is added to the [Bluetooth Devices] window.



You can now use the mouse.

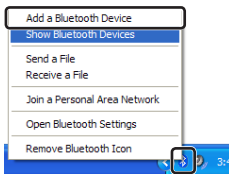
- Refer to "4. Checking Mouse Operation" on the back of this sheet to confirm that the mouse works correctly.

#### ■ Windows Vista® (up to SP1) and Windows® XP

\* Screen appearance may change depending on operating system, but the procedure is the same.

#### 1 In the task tray or the notification area, right-click the Bluetooth icon ( ) and click [Add a Bluetooth Device].

The [Add Bluetooth Device Wizard] is displayed.



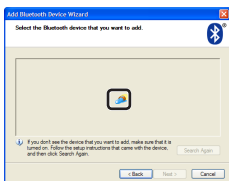
- If the icon is not displayed, click the [Start] button, click [Control Panel], click [Hardware and Sound], and then click [Bluetooth Devices]. When the [Bluetooth Devices] window is displayed, click [Add].

#### 2 Select the [My device is set up and ready to be found.] check box and then click [Next >].

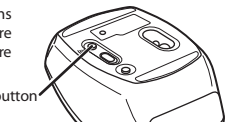
The system starts searching for Bluetooth devices to add.



#### 3 Hold down the pairing button on this product while the torch icon ( ) is displayed.



The pairing indicator lamp turns on during the pairing procedure and turns off when the procedure is complete (step 6). Pairing button



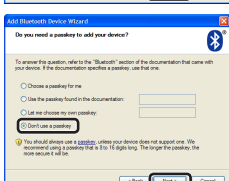
- If this product is not displayed in the list, check that its power is turned on, press the pairing button, and then click [Search Again].

#### 4 Click [ELECOM Bluetooth BlueLED MOUSE] and then click [Next >].

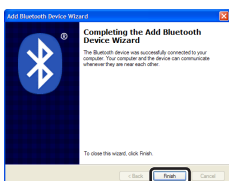


#### 5 Select [Don't use a passkey], and click [Next >].

Product registration starts.

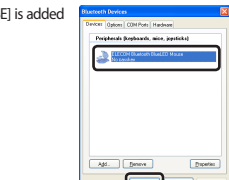


#### 6 Click [Finish].



[ELECOM Bluetooth BlueLED MOUSE] is added to the [Bluetooth Devices] window.

#### 7 Click [OK].



You can now use the mouse.

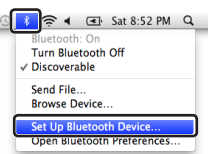
- Refer to "4. Checking Mouse Operation" on the back of this sheet to confirm that the mouse works correctly.

## 3 Pairing the Mouse with the PC

### When using Mac OS X

\* Screen appearance may change depending on your Mac OS version, but the procedure is the same.

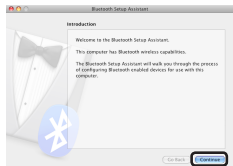
- 1 From the **Bluetooth** menu, click **[Set up Bluetooth Device]**.  
The Bluetooth Setup Assistant is displayed.



If the Bluetooth menu is not displayed, from the Apple menu, click [System Preferences]. When the [System Preferences] window is displayed, click [Bluetooth], and then click **+** on the [Bluetooth] window.

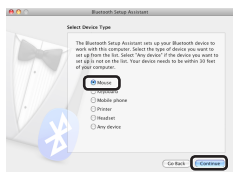
- 2 If using Mac OS X 10.5.x, proceed to step 2.  
If using Mac OS X 10.6.x, proceed to step 4.

- 2 Click **Continue**.



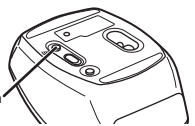
- 3 Select **[Mouse]**, and click **Continue**.

The system starts searching for Bluetooth devices to add.

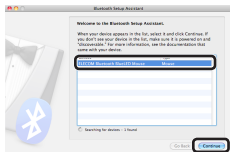


- 4 Press the pairing button on this product.

The pairing indicator lamp turns on during the pairing procedure and turns off when the procedure is complete (step 6).



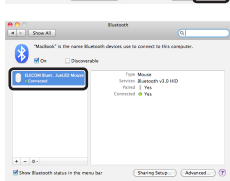
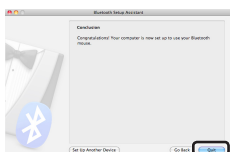
If a message saying that registration failed is displayed, check that this product is turned on, press the pairing button, and then click **Continue**.



- 5 Click **[ELECOM BLUETOOTH LASER MOUSE]** and then click **Continue**.

- 6 Click **Quit**.

When registration is completed successfully, [ELECOM Bluetooth BlueLED MOUSE] appears in the [Bluetooth] window.



You can now use the mouse.

- Refer to "4. Checking Mouse Operation" to confirm that the mouse works correctly.

## 4 Checking Mouse Operation

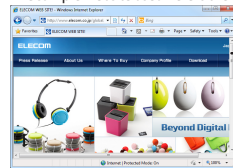
### When using Windows®

Check that the mouse vertical scrolling functions are working correctly in Windows® Internet Explorer.

- 1 From the [Start] menu, select [All Programs], and then [Internet Explorer].  
Internet Explorer will launch.

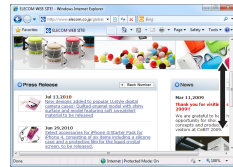
- 2 Display your favourite web site in Internet Explorer and change the size of the window so that the vertical scrollbar appears.

\*The sample website used here is the ELECOM homepage.



Scrollbar

- 3 Scroll the wheel back and forth.



The mouse is operating normally if the screen moves up and down as you scroll the tilt wheel.

In applications that do not support scrolling, the screen will not move when you scroll the wheel.

### When using Mac OS X

Check that the mouse vertical scrolling functions are working correctly in Safari.

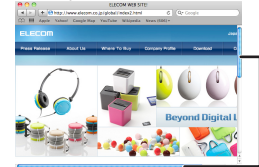
- 1 Click the Safari icon in the Dock.

Safari will launch.



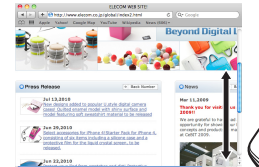
- 2 Display your favourite web site in Safari and change the size of the window so that the vertical and horizontal scrollbars appear.

\*The sample website used here is the ELECOM homepage.



Scrollbar

- 3 Scroll the wheel back and forth.



The mouse is operating normally if the screen moves up and down as you scroll the tilt wheel.

In applications that do not support scrolling, the screen will not move when you scroll the wheel.

### When using PlayStation® 3

This product supports PlayStation® 3 system software version 3.60. For details, refer to "Troubleshooting".

- 1 From the home menu, select [Settings], and then select [Manage Bluetooth® Devices].

The Manage Bluetooth Devices screen is displayed.



- 2 Select [Register New Device].

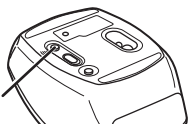
If you have not registered any Bluetooth devices, you will be asked if you want to register the device. Select [Yes] to continue.

- 3 Select [Start Scanning].

The system starts searching for Bluetooth devices to add.

- 4 Press the pairing button on this product.

The pairing indicator lamp turns on during the pairing procedure and turns off when the procedure is complete (step 5).



If this product is not found, check that its power is turned on, press the pairing button, and then select [Start Scanning].

- 5 Select [ELECOM Bluetooth BlueLED MOUSE].

When registration is completed successfully, [ELECOM BLUETOOTH LASER MOUSE] appears in the list of registered devices.

You can now use the mouse.

- Refer to "4. Checking Mouse Operation" to confirm that the mouse works correctly.

### When using PlayStation® 3

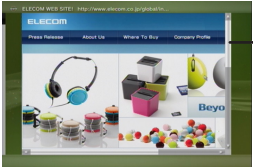
Check that the mouse vertical scrolling functions are working correctly in the PlayStation® 3 Internet browser.

- 1 From the XMB™ home menu, select [Network], and then select [Internet Browser].

The Internet browser is displayed.

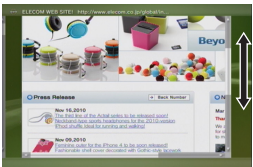
- 2 Display your favourite website in the Internet browser, and change the size of the browser window so that the scroll bar is displayed.

\*The sample website used here is the ELECOM homepage.



Scrollbar

- 3 Scroll the wheel back and forth.



If the screen scrolls up and down in time with the movement of your finger, operation is normal.

In applications that do not support scrolling, the screen will not move when you scroll the wheel.

## Troubleshooting

### When the product appears to be malfunctioning

- When the mouse pointer on the screen does not move, or moves unstably, when the mouse is moved

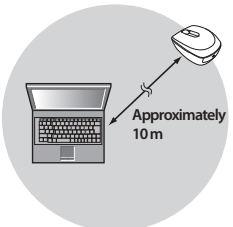
- Check that this product, and the PC's Bluetooth function or Bluetooth adapter are turned on.
- Check pairing status to ensure that this product is paired correctly with the PC and that pairing has not been cancelled.



- The pairing indicator lamp turns on during the pairing procedure and turns off when the procedure is complete.
- For details on the PC's Bluetooth function and Bluetooth adapter, refer to the relevant instruction manuals. Alternatively, contact the manufacturer.

- The PC and the mouse body are too far apart or there is a possibility that the PC is facing in a direction from which it cannot receive radio signals.

Adjust the position of the PC. The operable range of this product is the area within a circle with a radius of 10 m from the PC. Depending on the usage environment, the mouse may not operate even when it is within approximately 10 m of the PC. In such cases, move the mouse closer to the PC until operation stabilises.



- It is possible that the reflectivity of the surface on which this product is being used is not suitable for an optical mouse. Use this product on a mouse pad that is designed for use with optical mice.

- When using this product on a metallic surface such as a steel desk, radio wave outreach may be shortened. In such cases, move the PC closer to the mouse until mouse operation stabilises.

- Interference may occur if multiple units of this product are used together or if this product is used with other wireless devices. In this case, change the channel of other wireless devices.

- Operation becomes unstable when battery power is low. See "Installing-Replacing the Battery" on the reverse of this sheet, and replace the batteries as soon as possible.

- The alkaline batteries supplied with this product are for checking product operation. These batteries may discharge and drain during storing and shipping.

- When the remaining battery level is low, the remaining battery level indicator lamp is flashed in red for a certain period.

\* When not using the mouse, turn it off to save battery power.

- It is possible that the driver is conflicting with another driver such as that for a laptop touch pad. To use this product correctly, you must delete the touch pad driver. However, if you delete this driver, you may not be able to use the touch pad or touch pad functions. Contact the PC manufacturer for more details.

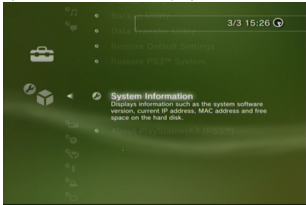
### Checking the PlayStation® 3 system software version

You must have system software version 3.60 to use this product with PlayStation® 3.

Follow the procedure below to check the system software version.

- 1 From the XMB™ home menu, select [Settings], select [System Settings], and then select [System Information].

System information is displayed.



- 2 Check that the system software version is 3.60.

If the system software version is not 3.60, perform a system update to update the PlayStation® 3 system software to the most recent version. For details regarding the system update procedure, refer to the PlayStation® 3 manual.

## Basic specifications

Product name	BlueLED Bluetooth® Mouse
Article No.	M-BL3BB Series
Supported devices	Devices that support the Bluetooth HID profile (A Bluetooth® adapter that supports the HID profile is required to use this product with a PC that does not support Bluetooth®.) PlayStation® 3 (system software version 3.60)
OS	Windows 7 (up to SP1), Windows Vista (up to SP2), Windows XP (SP3) Mac OS X (10.5 to 10.5.8, 10.6 to 10.6.8, 10.7 to 10.7.2)
Sensor method	Optical
Resolution (dpi)	800/1600 (Switchable)
Connection method	Bluetooth® wireless
Compliant standard	Bluetooth® v3.0 Class 2
Profile	HID (Human Interface Device)
Radio frequency	2.4 GHz bandwidth
Radio wave method	GFSK modulation
Radio wave outreach	Non-magnetic substance (e.g. wooden desk): Approx. 10 m Magnetic substance (e.g. metal desk): Approx. 3 m * Values indicated are those obtained by ELECOM and are not guaranteed.
Mouse Dimensions	74.3 (W) x 52.3 (D) x 33.4 (H) mm
Operating temperature/humidity	5 to 40°C, 90% RH max. (no condensation)
Storing temperature/humidity	-10 to 60°C, 90% RH max. (no condensation)
Batteries	AAA alkaline battery, AAA manganese battery, rechargeable AAA nickel hydride battery
Operating time	Measure of the operating time when an AAA alkaline battery is used Continuous operating time: Approx. 75 hours Continuous standby time: Approx. 125 days Estimated serviceable time: Approx. 34 days (when the PC is operated for eight hours a day and 25% of the PC operation is assigned to mouse operation)

## ELECOM CO., LTD.

1-1 Fushimi-machi 4-Chome Chuoku, Osaka Japan 541-8765  
URL: <http://www.elecom.co.jp/global/>  
[overseas@elecom.co.jp](mailto:overseas@elecom.co.jp)

宜麗客(上海)貿易有限公司  
上海市徐匯區肇嘉浜路1065甲號飛雕國際大廈704號  
電話：86-21-33680011  
FAX：86-21-64271706  
URL：http://www.elecom-china.com/  
ELECOM Korea Co., Ltd.  
SF Suam Bldg. 1358-17, Seocho2-dong, Seocho-gu, Seoul 137-862, Korea  
TEL：1588-9514  
FAX：(02)3472-5533  
URL：www.elecom.co.kr

ELECOM Singapore Pte. Ltd.  
33 UBI AVENUE 3 # 03-56. VERTEX SINGAPORE (408868)  
TEL：(65)-6347-7747  
FAX：(65)-6753-1791  
ELECOM India Pvt. Ltd.  
408-Deepali Building, 92- Nehru Place, New Delhi-110 019, India  
TEL：011-40574543  
e-mail: support@elecom-india.com  
URL: <http://www.elecom-india.com/>

BlueLED Bluetooth® Mouse  
M-BL3BB Series  
User's Manual  
1st edition, January 10, 2012  
ELECOM Co., Ltd.

- This manual is copyright of ELECOM Co., Ltd.
- Unauthorised copying and/or reproducing of all or part of this manual is prohibited.
- The specifications and appearance of this product may be changed without prior notice for product improvement purposes.
- ELECOM Co., Ltd. shall bear no responsibility for any and all affects resulting from the use of this product regardless of the above reasons.
- Export or service transaction permission under the Foreign Exchange and Foreign Trade Control Law is required in order to export this product or parts of this product that constitute strategic materials or services.
- Windows and the Windows logo are trademarks of the Microsoft group of companies.
- Mac, Mac OS, and Macintosh are registered trademarks or trademarks of Apple Inc., in the United States.
- "PlayStation" and "PS3" are trademarks or registered trademarks of Sony Computer Entertainment Inc.
- The Bluetooth word mark and Bluetooth logo are all trademarks that are owned by the Bluetooth SIG and licensed out for use to ELECOM Co., Ltd. that are incorporating Bluetooth wireless technology into their products.
- Company names, product names, and other names in this manual are generally trademarks or registered trademarks.