



**USB 2.0 Multi Type Card Reader  
MR-A004 series  
User's manual**

**Forward**

Thank you for purchasing the MR-A004 Series USB 2.0 card reader. This user's manual explains how to set up the product. Please thoroughly read this user's manual before use, to ensure proper setup of the product.

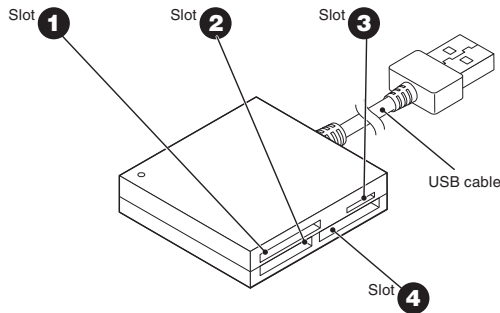
**Safety Precautions**

- Always observe the cautions issued by PC and peripheral device manufacturers when connecting and disconnecting this product.
- Do not attempt to disassemble, modify or repair this product by yourself. Doing so may cause a fire, electric shock, or product damage and may void the warranty.
- Do not use this product or any PC to which this product is connected in areas where water is used or in very humid environments. Doing so may cause a fire, electric shock, or product damage.
- When connecting and disconnecting this product, always touch a metal object (such as a steel desk or a metal door handle) to discharge static electricity before touching this product. Static electricity may damage this product.
- If you suspect something is wrong with the product, discontinue use immediately.

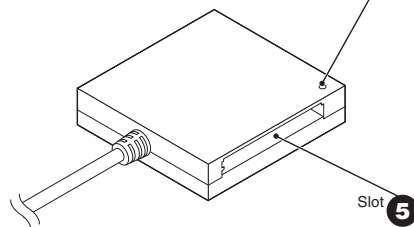
**Specifications**

- OS.....Windows® 7, Windows Vista® (up to SP2), Windows® XP (SP1 to SP3), Windows® 2000 (SP4)  
Mac OS X (10.2 to 10.6)  
In the above OSs, the drivers provided with the OSs can be used.
- Interface.....USB
- Operating temperature.....0 to 40°C
- Operating humidity.....0 to 80%
- Dimensions .....59.0 (W) x 59.0 (D) x 14.0 (H) mm  
(Not including protruding parts)
- Cable length .....10 cm (Not including connector)
- Included items .....Manual x1

**Part names and information on the memory card slot and USB port**



**LED**  
The LED of this product will flash when writing to or reading a memory card.  
Do not remove a memory card from the slot while the PC is writing to or reading from it.  
Do not disconnect this product from the PC while it is writing to or reading from a memory card. Doing so may cause product damage and result in file damage or loss.



Memory card slots 3 and 4 cannot be used at the same time. If media is inserted into the slots at the same time, the media may not be recognized.

**Usage Precautions**

- If the PC is started when a memory card is inserted in this product, a disk scan may be performed automatically, even if the PC had no previous abnormal termination errors.
- If the PC is started when a memory card is inserted in this product, even if the device has been connected before, the "Found New Hardware" message may be displayed.
- It may take a minute or so for this product to be recognised by the PC after it has been connected. Wait until you can operate the computer.
- Certain types of media, including older media and media that uses special formats, may not be compatible with this product.
- Before using media with digital cameras, mobile phones, or other devices, format it with the device that you use.
- It may not always be possible to use media that has been formatted using a PC. In such cases, media can be used by first formatting it on the device with which it is to be used.
- This product does not support copyright protection.
- Please follow the removal of this product, to the procedure "5 Disconnect the card reader from the PC". There is a possibility the file disappearing.
- ELECOM Co., Ltd. shall bear no responsibility whatsoever for any data loss or damage resulting from the use of this product.
- Always insert and remove media from this product with the correct orientation and alignment.
- This product does not support standby or sleep modes.
- This product does not support modem cards or similar I/O cards.
- Do not use this product in humid or dusty environments.
- Do not subject this product to strong shocks.
- To clean the product, wipe it with a soft, dry cloth.
- Do not use benzene, paint thinner, alcohol or similar liquids.

**How to insert memory cards into the corresponding card slots**

Ensure the memory card is oriented correctly, and insert it straight into the correct memory card slot.

For the latest information on supported media, visit the official ELECOM website.  
<http://www.elecom.co.jp/global/download/compatibility.html>

**Slot 1**  
xD Picture card

**Slot 2**  
Memory Stick  
Memory Stick PRO  
Memory Stick Duo  
Memory Stick PRO Duo

**Slot 3**  
microSD Memory Card  
microSDHC Memory Card

**Slot 4**  
SD Memory Card  
SDHC Memory Card

**Slot 5**  
CompactFlash  
Microdrive

mini SD Memory Card  
mini SDHC Memory Card

Multimedia Card  
Reduced Size Multimedia Card RSMC

See the reverse side of the manual for information on connecting to/removing from the PC.

# Reading from and writing to a memory card using a PC

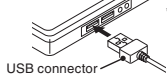
## 1 Activate the PC

1 The power of PC is turned on.

If the PC is started with this product connected, the product may not be recognized. If this problem occurs, remove and reconnect the product.

## 2 Connect to the PC

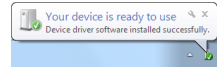
1 Connect the USB connector to the PC USB port. This device will be recognized automatically.



\* Confirm the proper up/down orientation of the connector when you connect it.

2 The card reader is automatically recognised and the connection procedure is complete.

When using Windows®, an "installation complete" notification will appear in the taskbar.



## 3 Insert a memory card

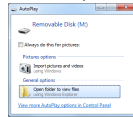
1 Insert a memory card in the appropriate slot with the correct orientation and alignment. Refer to "How to insert memory cards into the corresponding card slots" (on the front side) for details.

Windows® 2 The inserted memory card can be accessed.

Macintosh® 2 A drive icon appears on the desktop and you can access the memory card.



If an Auto Play dialog box appears, select the action that you want Windows to perform.



\* If the card is empty, it is opened directly as a removable disk.

## 4 Remove the memory card

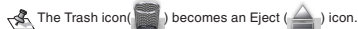
Do not remove a memory card while the PC is writing to or reading from it.

Windows® 1 Open "My Computer" ("Computer" in Windows 7 and Windows Vista).

2 Right-click the removable disk that the memory card was assigned to, and on the context menu that appears, click [Eject].

3 Remove the memory card from the slot.

Macintosh® 1 Drag the drive icon to the Trash (Eject).



2 Check that the drive icon has disappeared and remove the memory card from the slot.

## 5 Disconnect the card reader from the PC

Do not disconnect the card reader while the PC is writing to or reading from it.

Windows® 1 Click the or icon in the Taskbar or the Notification Area.

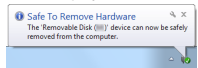
\* If the icon is displayed in the Notification Area in Windows® 7, click it and then click the USB icon () that appears.

\* If removing a memory card using Windows® 7, proceed to step 4.

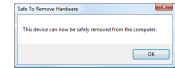
2 Click the message that appears.

\* When using Windows Vista, two messages ("USB mass storage device") is displayed. For each message, perform steps 2 and 3 and then proceed to step 4.

3 The "Safe to Remove Hardware" notification is displayed.



• Windows® 7, Windows® XP Proceed to Step 4  
• Windows Vista® 7, Windows® 2000 Click and proceed to Step 4



If using a USB device or PC card besides this product, both names will be displayed. In this case, click the message that appears for this product (indicating a USB mass storage device or USB disc).

If a memory card is inserted into the memory card slot when using Windows® 7, click "Eject Mass Storage Device".

Macintosh® Remove all memory cards from the card reader slots.

4 Disconnect the card reader from the USB port.

Always disconnect the card reader from the PC before turning off the PC.

## When using this product with Windows® 2000

Windows® 2000 Service Pack 4 or above is required to use this product. Perform the following steps to confirm your version. If using Service Pack 3 or earlier, use Windows Update to update it to the latest version of Windows® 2000. For information on performing the update, refer to your PC manual or consult the manufacturer of your PC.

- Right-click the My Computer icon on your desktop, and then click "Properties" from the menu. The system properties window is displayed.
- Confirm your version of Windows® 2000.

## If the Windows® installed on your computer does not support USB 2.0

When performing step 2 of "2. Connect to the PC", the following taskbar message or system notification will appear when you connect the USB connector to the PC USB port.

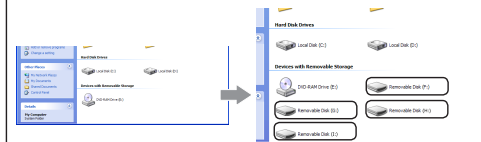
- When using Windows® XP Service Pack 1 or earlier "HI-SPEED USB Device Plugged into non-HI-SPEED USB Hub"
- When using Windows Vista® or Windows® XP Service Pack 2 or above "This Device Can Perform Faster"

This message is to inform you that even though this product is a USB 2.0-compatible device, the port that it is connected to does not support USB 2.0. In this case, this product will operate at USB 1.1 speed, not that of USB 2.0.

## About Windows® drive letters

In Windows®, the memory cards slots are assigned in the following order. (the information in brackets assumes that the PC's last assigned drive letter is E)

1st	Removable device (F:)	Memory card slot 5
2nd	Removable device (G:)	Memory card slot 1
3rd	Removable device (H:)	Memory card slot 2
4th	Removable device (I:)	Memory card slot 3 or 4



The order of drive assignment in Windows® 7 may differ, depending on your PC.

In Windows® 7, the drive icon will appear once a memory card is inserted into a slot.

## About Macintosh® drive icons

When using a Macintosh®, a different drive icon will appear depending on which memory slot you insert a card into.

Slot	1 or 2 or 3	4 or 5
Drive icon		

- If multiple memory cards are inserted into card slots at the same time, the drives names will be named "Untitled", "Untitled1", "Untitled2", etc.
- The drive priority is "Untitled", "Untitled1" and "Untitled2". For example, if memory cards are inserted in the order 1, 2, 3, then 1 will become "Untitled", 2 will become "Untitled1", and 3 will become "Untitled2". If you remove cards 1 and 2, and then reinsert 2, then 2 will be designated "untitled".

## Memory card format

Memory cards that have been formatted on Windows® can also be used on Macintosh® computers. Memory cards that have been formatted on Macintosh® cannot be used on Windows® computers.

## If the PC does not recognise the card reader

If the PC does not recognise the card reader, disconnect it from the PC and try connecting it again.

In Windows® 7, even if this product is recognised, the drive will not be displayed until a memory card has been inserted.

## ELECOM CO., LTD.

1-1 Fushimi-machi 4-Chome Chuoku, Osaka Japan 541-8785  
URL: <http://www.elecom.co.jp/global/overseas@elecom.co.jp>

宜麗客(上海)貿易有限公司  
上海市徐匯區肇嘉浜路1065甲号飛龍國際大廈704号  
電話: 86-21-33680011  
FAX: 86-21-64271706  
URL: <http://www.elecom-china.com/>

ELECOM Korea Co., Ltd.  
5F Suam Bldg. 1358-17, Seocho2-dong, Seocho-gu, Seoul 137-862, Korea  
TEL: 1588-9514  
FAX: (02)3472-5533  
URL: [www.elecom.co.kr](http://www.elecom.co.kr)

ELECOM Singapore Pte. Ltd  
33 UBI AVENUE 3 # 03-56. VERTEX SINGAPORE (408868)  
TEL: (65)-6347-7747  
FAX: (65)-6753-1791

ELECOM India Pvt. Ltd.  
408-Deepali Building, 92- Nehru Place, New Delhi-110 019, India  
TEL: 011-40574543  
e-mail: [support@elecom-india.com](mailto:support@elecom-india.com)  
URL: <http://www.elecom-india.com/>

USB 2.0 Multi Type Card Reader  
MR-A004 series  
User's manual  
1st edition, January 10, 2012

- This manual is copyright of ELECOM Co., Ltd.
- Unauthorized copying and/or reproducing of all or part of this manual is prohibited.
- The specifications and appearance of this product may be changed without prior notice for product improvement purposes.
- ELECOM Co., Ltd. shall bear no responsibility for any and all affects resulting from the use of this product regardless of the above reasons.
- Export or service transaction permission under the Foreign Exchange and Foreign Trade Control Law is required in order to export this product or parts of this product that constitute strategic materials or services.
- The SD logo, SDHC logo, SDXC logo, microSD logo, and microSDHC logo are trademarks of SD-3C, LLC.
- MultiMediaCard is a trademark of Infineon Technologies AG.
- Memory Stick, Memory Stick PRO, Memory Stick Duo, Memory Stick PRO Duo, and Memory Stick Micro are trademarks of Sony Corporation.
- xD Picture Card is a trademark of Fujifilm Corporation.
- Windows and the Windows logo are trademarks of the Microsoft group of companies.
- Mac and the Mac logo are trademarks of Apple Inc., registered in the United States and other countries.
- Company names, product names, and other names in this manual are generally trademarks or registered trademarks.