

USB 2.0 microSD/microSDHC Memory Card Reader/Writer MR-SMC07 series User's Manual

■ Forward

Thank you for purchasing the USB 2.0 microSD/microSDHC Memory Card Reader/Writer. Connect this card reader to a PC USB port to use it. It allows you to read and write from/to microSD and microSDHC memory cards without the need for an adapter.

This user's manual explains how to set up the product. Please thoroughly read this user's manual before use, to ensure proper setup of the product.

■ Safety Precautions

- Always observe the cautions issued by PC and peripheral device manufacturers when connecting and disconnecting this product.
- Do not attempt to disassemble, modify or repair this product by yourself.
Doing so may cause a fire, electric shock, or product damage and may void the warranty.
- Do not use this product or any PC to which this product is connected in areas where water is used or in very humid environments.
Doing so may cause a fire, electric shock, or product damage.
- When connecting and disconnecting this product, always touch a metal object (such as a steel desk or a metal door handle) to discharge static electricity before touching this product. Static electricity may damage this product.
- If you suspect something is wrong with the product, discontinue use immediately.

■ Specifications

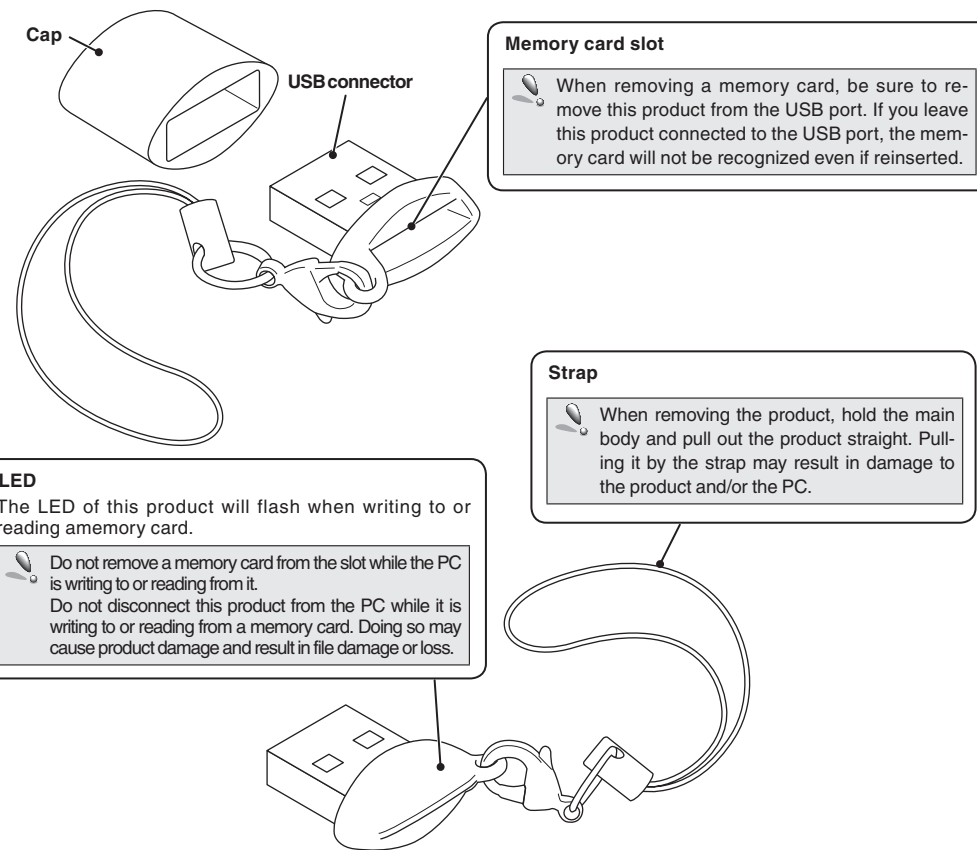
- OS.....Windows® 7, Windows Vista® (up to SP2), Windows® XP (SP1 to SP3), Windows® 2000(SP4)
Mac OS X (10.2 to 10.6)
In the above OSs, the drivers provided with the OSs can be used.
- Interface.....USB
- Operating temperature ..0 to 40°C
- Operating humidity0 to 80%
- Dimensions15.7 (W) x 8.8 (D) x 26.0 (H) mm
(When the cap is on, not including protruding parts)
- Included itemsManual x1
Cap x1
Strap x1

■ Usage Precautions

- To avoid loss of a memory card, do not carry this product with a memory card inserted.
- If the PC is started when a memory card is inserted in this product, a disk scan may be performed automatically, even if the PC had no previous abnormal termination errors.
- If the PC is started when a memory card is inserted in this product, even if the device has been connected before, the "Found New Hardware" message may be displayed.
- It may take a minute or so for this product to be recognised by the PC after it has been connected. Wait until you can operate the computer.
- Certain types of media, including older media and media that uses special formats, may not be compatible with this product.
- Before using media with digital cameras, mobile phones, or other devices, format it with the device that you use. It may not always be possible to use media that has been formatted using a PC. In such cases, media can be used by first formatting it on the device with which it is to be used.
- This product does not support copyright protection.
- Please follow the removal of this product, to the procedure "5 Disconnect the card reader from the PC ". There is a possibility the file disappearing.
- ELECOM Co., Ltd. shall bear no responsibility whatsoever for any data loss or damage resulting from the use of this product.
- Always insert and remove media from this product with the correct orientation and alignment.
- This product does not support standby or sleep modes.
- This product does not support modem cards or similar I/O cards.
- Do not use this product in humid or dusty environments.
- Do not subject this product to strong shocks.
- To clean the product, wipe it with a soft, dry cloth. Do not use benzene, paint thinner, alcohol or similar liquids.

Parts names and supported media

■ Parts names



Memory card slot

When removing a memory card, be sure to remove this product from the USB port. If you leave this product connected to the USB port, the memory card will not be recognized even if reinserted.

LED

The LED of this product will flash when writing to or reading a memory card.

Do not remove a memory card from the slot while the PC is writing to or reading from it. Do not disconnect this product from the PC while it is writing to or reading from a memory card. Doing so may cause product damage and result in file damage or loss.

Strap

When removing the product, hold the main body and pull out the product straight. Pulling it by the strap may result in damage to the product and/or the PC.

■ Supported media

Supported media	Max. storage capacity
microSD memory card (TransFlash)	2GB
microSDHC memory card Class2	16GB
microSDHC memory card Class4	16GB
microSDHC memory card Class6	16GB

- For the latest information on supported media, visit the official ELECOM website.
<http://www.elecom.co.jp/global/download/compatibility.html>
- This product is designed to continue supporting the latest media via firmware updates.

See the reverse side of the manual for information on connecting to/removing from the PC.

Reading from and writing to a memory card using a PC

1 Activate the PC

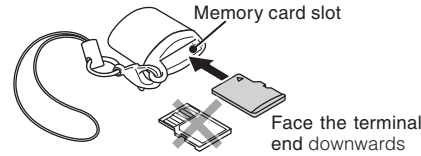
1 The power of PC is turned on.

! If the PC is started with this product connected, the product may not be recognized. If this problem occurs, remove and reconnect the product.

2 Insert a memory card

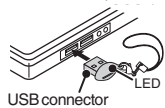
1 Firmly insert the memory card straight and in the correct orientation.

- Orient the memory card with the terminal end facing downwards
- Insert the memory card into the slot



3 Connect to the PC

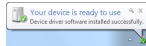
1 Remove the cap from the product, and then connect the USB connector to the PC USB port.



* Confirm the proper up/down orientation of the connector when you connect it.

2 The card reader is automatically recognised and the connection procedure is complete.

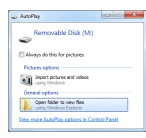
When using Windows®, an "installation complete" notification will appear in the taskbar.



Windows® 3 The inserted memory card can be accessed.

! If an Auto Play dialog box appears, select the action that you want Windows to perform.

* If the card is empty, it is opened directly as a removable disk.



Macintosh® 3 A drive icon appears on the desktop and you can access the memory card.



4 Disconnect the card reader from the PC

Do not remove the card reader while the LED is flashing.

Windows® 1 Click the icon in the Taskbar or the Notification Area.

* If the icon is displayed in the Notification Area in Windows 7, click it and then click the USB icon () that appears.

! If using a USB device or PC card besides this product, both names will be displayed. In this case, click the message that appears for this product (indicating a USB mass storage device or USB disc).

Macintosh® 1 Drag the drive icon to the Trash (Eject) and check that the drive icon has disappeared.



The Trash icon () becomes an Eject () icon.

2 The "Safe to Remove Hardware" notification is displayed.



• Windows® 7, Windows® XP Proceed to Step 4

• Windows Vista® 7, Windows® 2000

Click and proceed to Step 4



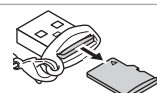
3 Disconnect the card reader from the USB port.

! When removing the product, hold the main body and pull out the product straight. Pulling it by the strap may result in damage to the product and/or the PC.

5 Remove the memory card

! Remove the product from the PC before removing the memory card.
• Be sure to remove the product from the PC before shutting down the PC.

1 Remove the memory card from the slot.



When using this product with Windows® 2000

Windows® 2000 Service Pack 4 or above is required to use this product. Perform the following steps to confirm your version. If using Service Pack 3 or earlier, use Windows Update to update it to the latest version of Windows® 2000. For information on performing the update, refer to your PC manual or consult the manufacturer of your PC.

- Right-click the My Computer icon on your desktop, and then click "Properties" from the menu. The system properties window is displayed.
- Confirm your version of Windows® 2000.

If the Windows® installed on your computer does not support USB 2.0

When performing step 2 of "2. Connect to the PC", the following taskbar message or system notification will appear when you connect the USB connector to the PC USB port.

- When using Windows® XP Service Pack 1 or earlier "HI-SPEED USB Device Plugged into non-HI-SPEED USB Hub"
- When using Windows Vista® or Windows® XP Service Pack 2 or above "This Device Can Perform Faster"

This message is to inform you that even though this product is a USB 2.0-compatible device, the port that it is connected to does not support USB 2.0. In this case, this product will operate at USB 1.1 speed, not that of USB 2.0.

Memory card format

Memory cards that have been formatted on Windows® can also be used on Macintosh® computers. Memory cards that have been formatted on Macintosh® cannot be used on Windows® computers.

ELECOM CO., LTD.

1-1 Fushimi-machi 4-Chome Chuoku, Osaka Japan 541-8765
URL: <http://www.elecom.co.jp/global/>
overseas@elecom.co.jp

宜麗客(上海)貿易有限公司
上海市徐匯區肇嘉浜路1065甲號飛龍國際大廈704號
電話: 86-21-33680011
FAX: 86-21-64271706
URL: <http://www.elecom-china.com/>

ELECOM Korea Co., Ltd.
5F Suam Bldg, 1358-17, Seocho2-dong, Seocho-gu, Seoul 137-862, Korea
TEL: 1588-9514
FAX: (02)3472-5533
URL: www.elecom.co.kr

ELECOM Singapore Pte. Ltd
33 UBI AVENUE 3 # 03-56. VERTEX SINGAPORE (408868)
TEL: (65)-6347-7747
FAX: (65)-6753-1791

ELECOM India Pvt. Ltd.
408-Deepali Building, 92-Nehru Place, New Delhi-110 019, India
TEL: 011-40574543
e-mail: support@elecom-india.com
URL: <http://www.elecom-india.com/>

USB 2.0 microSD/microSDHC Memory Card Reader/Writer
MR-SMC07 series
User's manual
1st edition, January 10, 2012

- This manual is copyright of ELECOM Co., Ltd.
- Unauthorised copying and/or reproducing of all or part of this manual is prohibited.
- The specifications and appearance of this product may be changed without prior notice for product improvement purposes.
- ELECOM Co., Ltd. shall bear no responsibility for any and all affects resulting from the use of this product regardless of the above reasons.
- Export or service transaction permission under the Foreign Exchange and Foreign Trade Control Law is required in order to export this product or parts of this product that constitute strategic materials or services.
- The microSD logo, and microSDHC logo are trademarks of SD-3C, LLC.
- Windows and the Windows logo are trademarks of the Microsoft group of companies.
- Mac and the Mac logo are trademarks of Apple Inc., registered in the United States and other countries.
- Company names, product names, and other names in this manual are generally trademarks or registered trademarks.