

Slide-out Bluetooth® Keyboard
specially for the iPhone4/4S
TK-FBI033 series
User's Manual

Thank you for purchasing the ELECOM slide-out Bluetooth® Keyboard specially for the iPhone4/4S, the "TK-FBI033" Series. This product employs an English keyboard layout and Bluetooth® wireless technology. This manual describes the operating instructions and safety precautions for using this product. Ensure that you have read this manual before using the product. After reading this manual, store it somewhere safe for future reference. * Except in certain cases, the TK-FBI033 Series is referred to as "this product" in this manual.

■Meaning of symbols

	DANGER	Failure to observe precautions may result in highly dangerous situation leading to in serious personal injury or death due to fire or electric shock.
	WARNING	Failure to observe precautions may result in serious personal injury or death due to fire, electric shock, or other causes.
	CAUTION	Failure to observe precautions may result in personal injury due to electric shock or other causes, and may damage other equipment.

- Prohibited action
- Mandatory action
- Situation that needs attention
- Notes and reference information

Safety Precautions

Observe these precautions carefully to avoid personal injury, damage, fire, and other problems.

	DANGER
	Always use the charging cable supplied by ELECOM, and follow the charging procedure as instructed. Charging using a cable or procedure other than instructed can lead to battery overheating, leaking, or explosion.
	Do not tamper with or attempt to take apart the product. This may result in fire or electric shock.
	Do not use this product if it is leaking. If the internal battery is leaking, immediately stop use of the product. This can pose a risk of overheating and/or damage.

	DANGER
	Immediately stop use of the product if you notice any abnormal operation. Do not use this product if you notice a leaking battery, odd colour changes, warping, or any other abnormalities. Continuing to use the product under these conditions may result in overheating or explosion.
	If liquid substance from this product comes into contact with any part of your body or clothing, immediately flush and wash the contacted area with clean water. Contact between your skin and any liquid inside the internal battery may result in skin damage.
	In the case that liquid from the internal battery enters your eyes, do not rub, as this may cause loss of vision. Immediately flush the contacted area with clean water and seek treatment from a physician as soon as possible. This may result in electric shock or injury.
	Do not plug in/unplug this product with wet hands. This may result in electric shock or injury.
	Only use this product at the specified rated voltage. Using this product outside of the specified rated voltage range may result in overheating, electric shock, or injury.

	WARNING
	If a foreign object (water, metal chip, etc.) enters the product, immediately stop using the product. If you continue to use the product under these conditions, it may cause a fire or electric shock.
	If an abnormality is found with this product (emission of heat, smoke or abnormal smell from the product), immediately stop using the product, shut down the computer, and after thoroughly checking that heat from the product will not cause burns. After doing this, contact the retailer from whom you purchased the product. If you continue to use the product under these conditions, it may cause a fire or electric shock.
	Do not drop or hit this product. If this product is damaged, immediately stop using it and turn it off. After doing this, contact the retailer from whom you purchased the product. If you continue to use the product in a damaged condition, it may cause a fire or electric shock.
	Do not attempt to disassemble, modify or repair this product. Doing so may cause a fire, electric shock, or product damage and may void the warranty.
	Do not put this product in fire, as the product may burst, resulting in a fire or injury.

	CAUTION
	Do not place this product in any of the following environments: <ul style="list-style-type: none">• In a car exposed to sunlight, a place exposed to direct sunlight, or a place that becomes hot (around a heater, etc.)• In a moist place or a place where condensation may occur• In an uneven place or a place exposed to vibration• In a place where a magnetic field is generated (near a magnet, etc.)• In a dusty place
	This product does not have a waterproof structure. Use and store this product in a place where the product body will not be splashed with water or other liquid. Rain, water mist, juice, coffee, steam or sweat may also cause product damage.
	Do not use this product with any device that may have a serious impact in the event this product fails. <ul style="list-style-type: none">• When you no longer need to use this product, be sure to dispose of it in accordance with the local ordinances and laws of your area.

■Cleaning the Keyboard

If the product becomes dirty, wipe it with a soft, dry cloth.

	Use of a volatile liquid (paint thinner, benzene, alcohol, etc.) may affect the material quality and colour of the product.
--	---

Cautions for Wireless Equipment

This product is wireless equipment using the entire range of the 2.4 GHz band and it is possible to avoid the band of mobile object identification systems. FH-SS is used for the radio wave method. The interference distance is 10 m. The 2.4 GHz band is also used by medical equipment, and wireless LAN equipment conforming to the IEEE 802.11b/11g/11n standard.

- Before using this product, check that there are no other "radio stations" operating nearby.
- If electromagnetic interference occurs between this product and other "radio stations", move this product to another location or stop using this product.
- * Other "radio stations" refer to industrial, scientific and medical devices using the 2.4 GHz band like this product, other radio stations of this type, licensed radio station premises for mobile object identification system that is used in factory production lines, certain non-licensed low power radio stations and amateur radio stations.

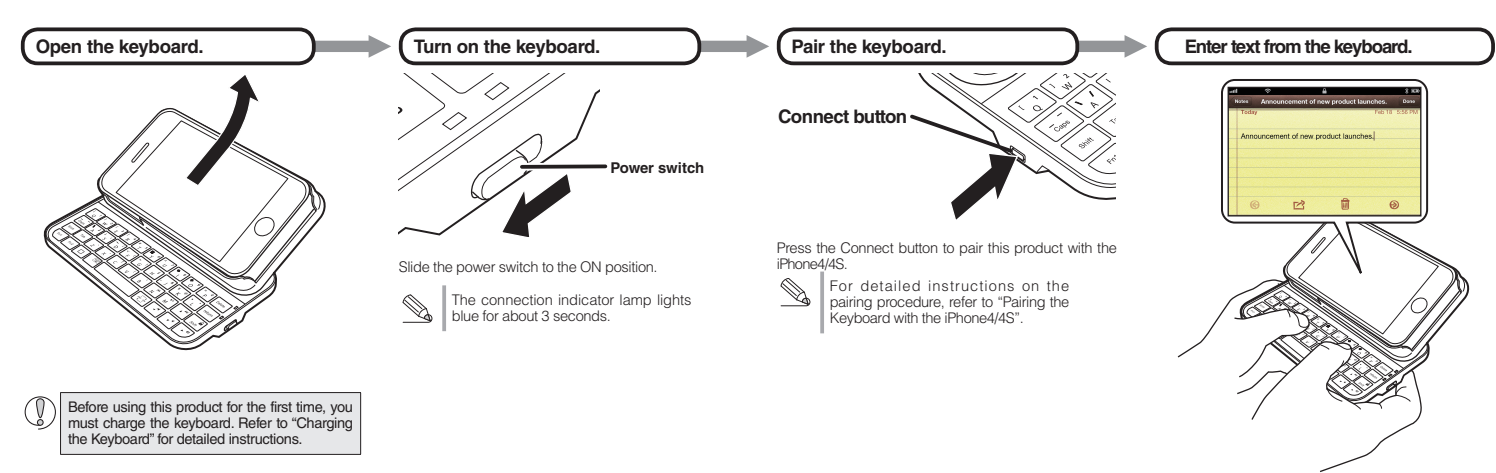
	WARNING
	Do not use this product with any device that may have a serious impact in the event of a malfunction. There are rare cases where an external radio wave at the same frequency or the radio wave emitted from a mobile phone causes this product to malfunction, slow down, or fail to operate.
	Do not use this product in a hospital or other locations where the use of radio waves is prohibited. The radio waves of this product may affect electronic and medical devices (e.g. pacemaker).
	The use of a wireless keyboard in an aircraft is prohibited by aviation law because doing so may interfere with flight safety. Turn off the keyboard before boarding an aircraft and do not use it in the aircraft.
	ELECOM is not liable for any accident or social damages incurred by the failure of this product.

Package Contents

This product's packaging contains the items listed below. Before using the product, check that all items are present. We make every effort to ensure that all products are packaged correctly. However, in the event that an item is missing or damaged, contact the retailer from whom you purchased the product.

- Keyboard x1
- USB charging cable [USB A ↔ micro B] (0.7m) x1
- User's Manual x1

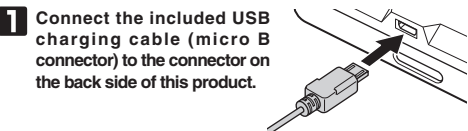
Basic Instructions



Charging the Keyboard

The keyboard must be charged before using for the first time, or if you have not used it for an extended period of time. Charge with the included USB charging cable.

Approx. 3.5 hours of charging time are required for full charge. If the lamp doesn't turn off after 3.5 hours, remove the USB charging cable and stop charging one time. Charging for more than 3.5 hours can result in shortening of the battery life, or device malfunction.



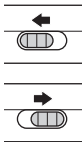
1 Connect the included USB charging cable (micro B connector) to the connector on the back side of this product.

Turning on the Keyboard

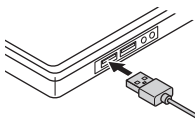
Turn on the keyboard to use it.

1 Slide the power switch to the ON position. The connection level indicator lamp lights blue for about 3 seconds.

When not using the product, turn the keyboard off to save battery power. Slide the power switch to the OFF position.



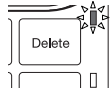
2 Connect the included USB charging cable (A connector) to the USB port of the PC.



Carefully check the orientation of the connector and the place where you will connect the USB connector.

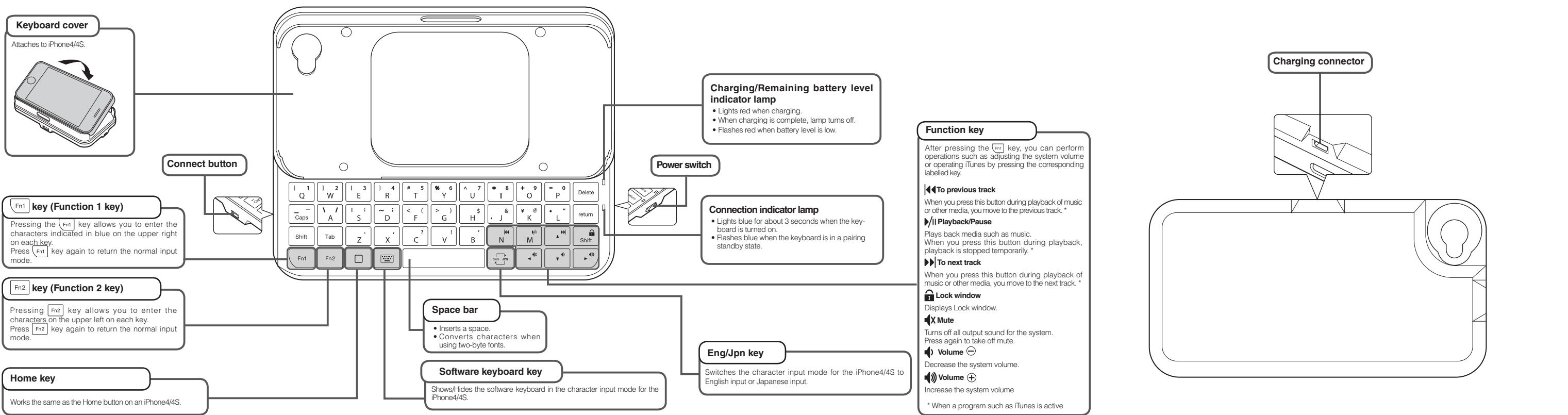
3 Turn on the PC.

The Charging/Remaining battery level indicator lamp lights red and charging begins. When charging is complete, the lamp turns off.



The charging is not completed after the specified charging time, stop charging. Continuing to charge more over the set time may lead to battery leakage, overheating, damage, or fire.

Part Names



Pairing the Keyboard with the iPhone4/4S

To connect this product to iPhone4/4S using Bluetooth, you need to pair them with each other.

✎ Pairing involves registering Bluetooth devices (in this case, this product and iPhone4/4S, etc.) with each other, and authorising a connection with a registered device.

Using iPhone4/4S

* The instructions below are based on iPhone4 (iOS 5.01) user interface. The procedure is the same for other models.

1 Touch [Settings].



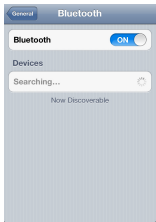
2 Touch [General].



3 Touch [Bluetooth].



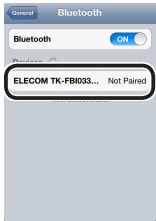
4 While the device is searching for other devices, press the Connect button on this product.



The connection indicator lamp flashes blue during the pairing procedure and turns off when the procedure is complete (step 7).

Connect button

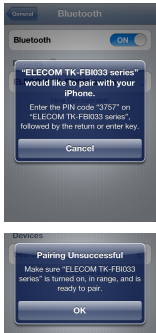
5 Touch [ELECOM TK-FBI033 series Not Paired].



6 Use this product to enter the PIN code that displays on the screen.

Press the **[Fn]** key, and then enter the PIN code using the keyboard numerical keys indicated in blue on the upper right on each key.

✎ If the PIN code was not entered correctly, the screen shown to the right will display. Touch "OK", and repeat from step 3.



7 Pairing is completed successfully when [ELECOM TK-FBI033 series] is shown as [Connected].

You can now use the keyboard.



If connection fails

Connection may fail depending on iPhone4/4S status. In such cases, re-connect by following the procedure below.

1 Touch [Settings].



2 Touch [General].



3 Touch [Bluetooth].



4 Touch [ELECOM TK-FBI033 series Not Connected].



5 Reconnection is completed successfully when [ELECOM TK-FBI033 series] is shown as [Connected].



Troubleshooting

When the keyboard does not work correctly

■ When text cannot be entered or keyboard does not work/is unstable

- ✦ Check that both the power of this product and the Bluetooth® function on iPhone4/4S are turned on.
- ✦ Check the pairing status to ensure that this product is paired correctly with iPhone4/4S and the pairing has not been cancelled.



- The connection indicator lamp flashes blue during the pairing procedure and turns off when the procedure is complete.

- ✦ The iPhone4/4S and the keyboard are too far apart or there is a possibility that the iPhone4/4S are facing in a direction from which it cannot receive radio signals. Adjust the position of the iPhone4/4S. The operable range of this product is the area within a circle with a radius of 10 m from the iPhone4/4S. Depending on the usage environment, the keyboard may not operate even when it is within approximately 10 m of the iPhone4/4S. In such cases, move the keyboard closer to the iPhone4/4S until operation stabilises.
- ✦ When using this product on a metallic surface such as a steel desk, radio wave outreach may be shortened. In such cases, move the keyboard closer to the iPhone4/4S until keyboard operation stabilises.
- ✦ Interference may occur if multiple units of this product are used together or if this product is used with other wireless devices. In this case, change the channel of other wireless devices.
- ✦ Operation becomes unstable when built-in battery power is low. Refer to "Charging the Keyboard" on the reverse of this sheet, and charge the battery.
 - When the remaining built-in battery level gets low, the Charging/Remaining battery level lamp flashes red.
- * When not using the product, turn the keyboard off to save battery power.

Built-in Battery Problem

■ Charging/Remaining battery level lamp does not light up when charging the battery.

- ✦ If the PC is not on, turn it on.
- ✦ If the PC is in standby mode, wake the PC from standby mode.
- ✦ The power level from the USB may be too low. Unplug other devices connected to the USB ports of the PC.

■ Battery charging requires longer time than specified.

- ✦ The battery may not charge correctly if it is charged where the ambient temperature is too high or low. Charge it where the temperature is kept at 5 - 40°C.

■ Built-in battery life is very short.

- ✦ If the built-in battery life is short even after it is fully charged, the service life of battery has come to an end.

Basic Specifications

Product name	Slide-out the Bluetooth® Keyboard specially for the iPhone4/4S
Article No.	TK-FBI033 series
Supported devices	iPhone4/4S
Connection method	Bluetooth® wireless
Compliant standard	Bluetooth® 3.0 Class 2
Profile	HID (Human Interface Device)
Radio frequency	2.4 GHz bandwidth
Radio wave method	FH-SS modulation
Radio wave outreach	Non-magnetic substance (e.g. wooden desk): Approx. 10 m Magnetic substance (e.g. metal desk): Approx. 3 m * Values indicated are those obtained by ELECOM and are not guaranteed.
No. of keys	42 (English layout)
Key pitch	10.0 mm
Key stroke	0.8 mm
Dimensions	120.0 (W) x 100.0 (D) x 50.0 (H) mm (keyboard extended) 120.0 (W) x 64.0 (D) x 23.5 (H) mm (keyboard stowed)
Weight	Approx. 95 g * Not including cable
Operating temperature/humidity	5 to 40°C, 90% RH max. (no condensation)
Storing temperature/humidity	-10 to 60°C, 90% RH max. (no condensation)
Types of batteries	Built-in rechargeable lithium-ion battery
Battery amount	98 mAh
Charging time	Approx. 3.5 hours
Operating time	Approx. 14 days (When used after fully charged) * Values indicated are those obtained by ELECOM and are not guaranteed.



ELECOM CO., LTD.

URL: <http://www.elecom.co.jp/global/overseas@elecom.co.jp>

宜麗客(上海)貿易有限公司
上海市徐匯區肇嘉浜路1065甲号飛雕國際大廈704号
電話 : 86-21-33680011
FAX : 86-21-64271706
URL : <http://www.elecom-china.com/>

ELECOM Korea Co., Ltd.
5F Suam Bldg. 1358-17, Seocho2-dong, Seocho-gu, Seoul 137-862, Korea
TEL : 1588-9514
FAX : (02)3472-5533
URL : www.elecom.co.kr
ELECOM Singapore Pte. Ltd
33 UBI AVENUE 3 # 03-56. VERTEX SINGAPORE (408868)
TEL: (65)-6347-7747
FAX: (65)-6753-1791

ELECOM India Pvt. Ltd.
408-Deepali Building, 92- Nehru Place, New Delhi-110 019, India
TEL: 011-40574543
e-mail: support@elecom-india.com
URL: <http://www.elecom-india.com/>

ednet gmbh
Oberliederbacher Weg 36 D-65843 Sulzbach/Taunus, Germany
Telefon:+49 6196 8838 0
Telefax:+49 6196 8838 111
URL : <http://www.ednet-gmbh.de/>

Mini Bluetooth® Keyboard
TK-FBI033 series
User's manual
1st edition, February 20, 2012
ELECOM Co., Ltd

- This manual is copyright of ELECOM Co., Ltd.
- Unauthorised copying and/or reproducing of all or part of this manual is prohibited.
- The specifications and appearance of this product may be changed without prior notice for product improvement purposes.
- ELECOM Co., Ltd. shall bear no responsibility for any and all affects resulting from the use of this product regardless of the above reasons.
- Export or service transaction permission under the Foreign Exchange and Foreign Trade Control Law is required in order to export this product or parts of this product that constitute strategic materials or services.
- iPhone is a trademarks of Apple Inc.
- The Bluetooth word mark and Bluetooth logo are all trademarks that are owned by the Bluetooth SIG and licensed out for use to ELECOM Co., Ltd. that are incorporating Bluetooth wireless technology into their products
- Company names, product names, and other names in this manual are generally trademarks or registered trademarks.