

SETUP GUIDE

Before Use

Package Check.....	2
Precautions in Handling.....	2
Precautions in Use	2
Operating Environment.....	3
Names of Parts.....	3

Webcam Installation and Setup

Checking Your Windows Version.....	4
Installing the Driver Utility	5
Checking Driver Utility Installation	8
Uninstalling the Driver Utility.....	9

Image Setup

Image Setup	10
-------------------	----

Appendix

If the Webcam Does Not Work	11
For Inquiries About this Product	11
Specifications	12

Before Use

Before using the UCAM-N1D30, read the following.

● Package Check

The product package should contain the following product and accessories. Though the product was carefully packaged, if something is missing, contact the place of purchase or ELECOM's Customer Service Center to obtain what is needed.

Webcam	1
Driver CD-ROM.....	1
Setup Guide (This publication)	1
User's Guide	1
Warranty	Printed on backside of package
Earphone & Microphone.....	1 set

● Precautions in Handling

- Install the webcam on a supporting object that can securely hold it. As time goes by, the clip may slip off if it does not have a good grip on the supporting object.
- Once the webcam has been installed, do not pull forcefully on the cable. Pulling excessively on the cable may dislocate the clip.
- Spring tension holds the webcam in place, therefore do not install the webcam on structurally weak objects.
- The clip may not hold the webcam securely if installed on slanted or uneven surfaces.
- Hold the clip firmly with one hand when turning the webcam.
- Connect the webcam to a USB port that supplies 5V, 500 mA of power or more.

● Precautions in Use

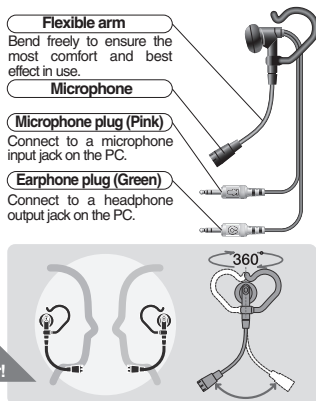
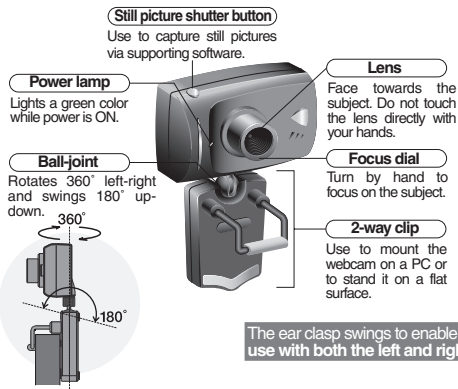
- Do not touch the webcam's lens with fingers. Use a commercially available lens blower brush or tissues to remove dust.
- The webcam is designed to receive power over a bus line.
- Do not connect the earphone plug to any port other than the headphone output jack of a PC, etc. Connecting the plug to other ports may damage the earphone.
- Do not connect the microphone plug to any port other than the microphone input jack of a PC, etc. Connecting the plug to other ports may damage the microphone.
- Do not install the webcam in humid or dusty places.
- Do not subject the webcam or accessories to strong impacts.
- Never disassemble, repair or remodel the webcam or accessories yourself.
- Do not apply excessive force to connectors.
- Clean the webcam by wiping gently with a dry soft piece of cloth. Do not use benzine, thinner or other cleaners.
- If you detect anything strange, stop using the webcam immediately and contact the place of purchase or Elecom's Customer Service Center.

● Operating Environment

CPU.....	1 GHz or faster Intel Pentium III
OS	Windows® XP or later, Windows® 2000 SP4 or later Mac OS not supported.
Memory	256 MB or more
HDD.....	260 MB or more
Graphic memory.....	32 MB or more
DirectX.....	9.0 or later
USB 2.0 port (Must supply 5V, 500 mA of power.)	
Broadband connection such as ADSL, etc.	
CD-ROM drive	

- Even when used in the above operating environment, audio and video quality may not be as expected because of hardware processing performance.
- **This webcam is specifically for use with USB 2.0.**
It requires high speed support. It does not support USB 1.1 interfaces.

● Names of Parts



Webcam Installation and Setup

This section explains how to install the included Driver Utility and connect the webcam. The webcam can be used with Adobe®Photoshop and Microsoft Imaging, as well as operated as a TWAIN device. When used with these image processing applications, VGA size still pictures can be taken.

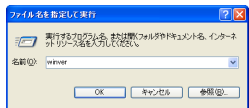
● Checking Your Windows Version

To use this webcam with Windows XP, you require Service Pack 1 or later. To use it with Windows 2000, you need Service Pack 4 or later. You can check the version of your Windows OS as follows.

1. Select 「ファイル名を指定して実行」 from the Start menu.

2. Type "winver" into the text line and click on the button.

The version information of the Windows system appears in the window.

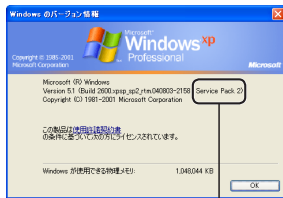


3. Check the Windows version.

If you are not running Service Pack 1 or a later version of Windows XP or Service Pack 4 or a later version of Windows 2000, update Windows to the most recent version using Windows Update. For update procedures, see the user's guide of your PC or contact the PC manufacturer.

For Windows XP

Service Pack 1 or a later version of Windows XP is required to use this webcam. If a supporting Service Pack is not installed in your PC, update Windows XP to the most recent version using Windows Update.



Check the version here.
This example shows Service Pack 2.

For Windows 2000


Service Pack 4 or a later version of Windows 2000 is required to use this webcam. If a supporting Service Pack is not installed in your PC, update Windows 2000 to the most recent version using Windows Update.



Check the version here.
This example shows Service Pack 4.

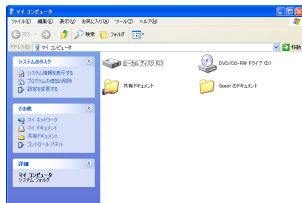
● Installing the Driver Utility

This section explains how to install the Driver Utility and connect the webcam to your PC. The Driver Utility must be installed before the webcam is connected to a PC.

- 
DirectX 9.0 or a later version is required to operate this webcam. If a supporting version is not installed in your PC, install one using Windows Update or other means. If Driver Utility installation is imparted before DirectX has been installed, the DirectX 9.0b installation program will be executed first. In such case, updating the software with Windows Update installs the latest version (as of January 2005), DirectX 9.0c.
- Install the Driver Utility before connecting the webcam to your PC.** If you get this backwards by mistake, cancel installation of the displayed USB device, disconnect the webcam and install the Driver Utility.

Installing the Driver Utility in Windows XP

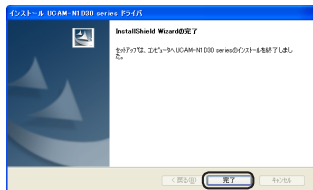
- 1. Load the included CD-ROM into the CD-ROM drive of your PC.**
- 2. Select 「マイコンピュータ」 from the Start menu.**



- 3. Double-click on the CD-ROM drive where you loaded the CD-ROM in Step 1.** Information on the CD-ROM appears in the window.
- 4. Double-click on Setup (Setup.exe).**
- 5. Click on the 「次へ」 (Next) button.** Installation begins.

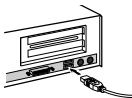


6. Click on the **完了 button.**



7. Peel the sticker off the USB connector of the webcam.

8. Plug the USB connector of the webcam into a USB port of the PC that supports USB 2.0.

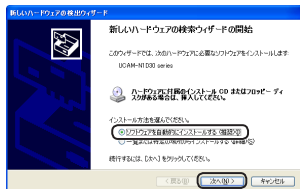


The New Hardware Detection Wizard appears.

The webcam can be disconnected from the PC even when power to the PC is ON.

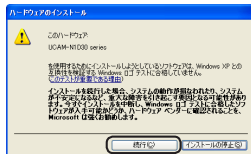
Connect the webcam by properly orienting the USB connector to the port.

9. Select 「ソフトウェアを自動的にインストールする」 and click on the **次へ button.**
Hardware Installation window appears on the monitor.

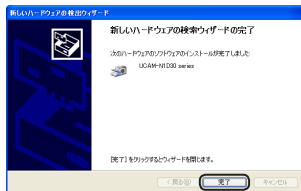


10. Click on the **続行 button.**

Installation begins.



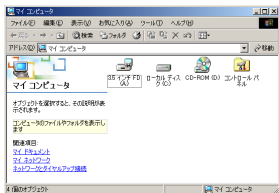
11. Click on the **完了 button.**



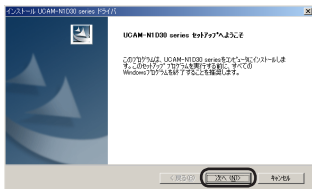
This completes Driver Utility installation. Now, check the Driver Utility has been correctly installed. Proceed to "Checking Driver Utility Installation" on pg. 8.

Installing the Driver Utility in Windows 2000

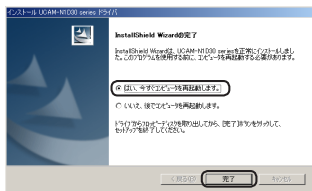
1. Load the included CD-ROM into the CD-ROM drive of your PC.
2. Double-click on 「マイコンピュータ」 on the desktop.



3. Double-click on the CD-ROM drive where you loaded the CD-ROM in step 1. Information on the CD-ROM appears in the window.
4. Double-click on Setup (Setup.exe).
5. Click on the 「次へ」 button. Installation begins.



6. Select 「はい、今すぐコンピュータを再起動します。」 and click on the **完了** button. The PC restarts.



7. Peel the sticker off the USB connector of the webcam.
8. Plug the USB connector of the webcam into a USB port of the PC that supports USB 2.0. The New Hardware Detection Wizard appears.



- ❗ The webcam can be disconnected from the PC even when power to the PC is ON.
- ❗ Connect the webcam by properly orienting the USB connector to the port.

This completes Driver Utility installation. Now, check the Driver Utility has been correctly installed. Proceed to "Checking Driver Utility Installation" on pg. 8.

● Checking Driver Utility Installation

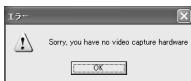
This section explains how to check whether the Driver Utility was installed correctly or not.

1. Connect the webcam to the PC.
2. Select 「すべてのプログラム」 (「プログラム」 in Windows 2000) >> "UCAM-N1D30 Series" >> "PCCAM", from the Start menu.
The PCCAM video capture tool starts up.

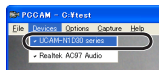


Note

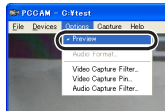
If a message like that shown at right appears on the monitor, either the Driver Utility was not correctly installed or the webcam is not correctly connected to the PC. Click on the [OK] button and check that the webcam is correctly connected to the PC. If there is nothing wrong with the connection, the Driver Utility was not correctly installed. Disconnect the webcam from the PC, uninstall the Driver Utility (see "Uninstalling the Driver Utility" on pg. 9 for uninstallation procedures) and re-install the Driver Utility as explained in "Webcam Installation and Setup".



3. Click on the Devices menu and check that a checkmark appears next to "UCAM-N1D30 Series".
If it does not, click on "UCAM-N1D30 Series" so that the checkmark appears.



4. Click on "Preview" in the Options menu so that a checkmark appears.
The image captured by the webcam appears in the window.



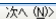
This confirms that the Driver Utility has been correctly installed and that webcam is operating properly.

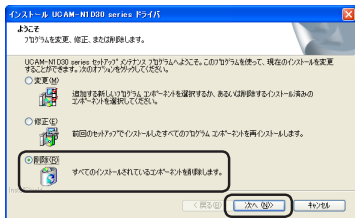
● Uninstalling the Driver Utility

This section explains how to uninstall the Driver Utility. Follow this procedure to uninstall the Driver Utility **when no longer necessary or for other reasons**.

1. If using Windows XP, select 「すべてのプログラム」 >> "UCAM-N1D30 Series" >> "Uninstall", from the Start menu.

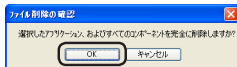
If using Windows 2000, select 「プログラム」 >> "UCAM-N1D30 Series" >> "Uninstall", from the Start menu.

2. Select 「削除」 and click on the  button.



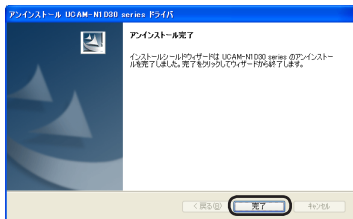
Uninstallation begins.

3. Click on the  button.



Uninstallation begins.

4. Click on the  button.



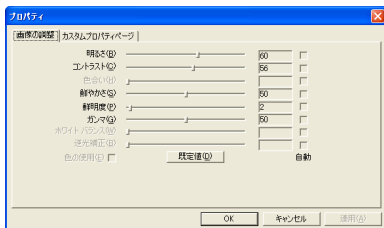
This completes uninstallation.

Image Setup

The webcam setup windows can be called from video capture software and video chat software. These setup windows enable you to adjust white balance, etc.

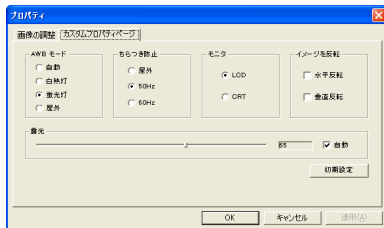
Settings are made from the two tabs on the Properties window.

「画像の調整」 (Image Setup) tab



- 「明るさ」 (Brightness)
Sets the brightness of the image.
- 「コントラスト」 (Contrast)
Sets the contrast between light and dark areas so that the image is crisp and clear.
- 「鮮やかさ」 (Chroma)
Sets the color saturation of the image.
- 「鮮明度」 (Sharpness)
Sets the sharpness so that contours in the image stand out.
- 「ガンマ」 (Gamma)
Sets the gamma value of the image.

「カスタムプロパティページ」 (Custom Properties Page) tab



- 「AWB モード」 (AWB Mode)
Sets the white balance. A selection can be made from 「自動」 (Auto), 「白熱灯」 (Incandescent), 「蛍光灯」 (Fluorescent) and 「屋外」 (Outdoors).
- 「ちらつき防止」 (Flicker Prevention)
Sets the flicker prevention level. Flickering can occur in the light source in some areas.
- 「モニタ」 (Monitor)
Sets the type of monitor.
- 「イメージを反転」 (Image Inversion)
Placing a checkmark in the checkbox inverts the image.
「水平反転」 (Horizontal)...
Inverts the image in the horizontal direction.
「垂直反転」 (Vertical)...
Inverts the image in the vertical direction.
- 「露光」 (Exposure)
Sets the exposure of the image. When a checkmark appears in the Auto checkbox, exposure is automatically set.

Appendix

● If the Webcam Does Not Work

Check the version of your OS.

This webcam runs only on Service Pack 4 and later versions of Windows 2000 and Service Pack 1 and later versions of Windows XP. It also requires a USB interface that supports the high speed of USB 2.0.

It cannot be used with Windows 98, Windows 98SE, Windows Me or Mac OS.

The webcam was connected to the PC before installing the Driver Utility.

If the webcam was mistakenly connected to the PC before the Driver Utility was installed, cancel installation of the displayed USB device, disconnect the webcam and then install the Driver Utility.

● For Inquiries About this Product

ELECOM Customer Service Center

TEL : 0570-084-465

FAX : 0570-050-012

[Business Hours] 9:00 - 12:00 13:00 - 18:00

Open all year

Specifications

Webcam

Image receiving element	1/4" CCD sensor
Max. resolution	640 x 480 pixel
Max. frame rate	30 fps (Same for VGA, QVGA and CIF)
Colors	16.77 million (24-bit)
Max. current consumption	14 mA while on standby, 104 mA while running
Interface	USB 2.0 dedicated (Does not support USB 1.1)
External dimensions	W67 x D35 x H102 mm
Weight	130 g
Clip opening	6 - 17 mm
Cable length	180 cm (To connector tip)

Earphone & Microphone

Earphone

Diaphragm diameter	15 mm
Diaphragm type	Dynamic
Max. input	10 mW
Impedance	32 Ω
Frequency band	100 - 22,000 Hz

Microphone

Type	Condenser microphone
Input sensitivity	-60 \pm 3dB
Frequency band	50 - 16,000 Hz

Common

Cable length	180 cm
Plug configuration	3.5 ϕ stereo mini-plug
Dimensions	W39 x D18 x H11 mm (Max.)
Weight	20 g
Microphone arm length	75 mm

-MEMO-

-MEMO-

USB Connection PC Camera
Setup Guide
UCAM-N1D30 Series

Published by ... ELECOM Corporation
1st Edition ... February 18, 2005

USB Connection PC Camera Setup Guide

ELECOM