

Bluetooth®
Pantograph Keyboard
TK-FBP014E series
User's Manual

Thank you for purchasing the ELECOM Bluetooth® Pantograph Keyboard.
This product is a wireless keyboard for use with Bluetooth® wireless technology.
This manual describes the operating instructions and safety precautions for using this product. Ensure that you have read this manual before using the product. After reading this manual, store it somewhere safe for future reference.
* Except in certain cases, "TK-FBP014E series" is referred to as "this product" in this manual.

■ Meaning of symbols

	WARNING Failure to observe precautions may result in serious personal injury or death due to fire, electric shock, or other causes.
	CAUTION Failure to observe precautions may result in personal injury due to electric shock or other causes, and may damage other equipment.

- Prohibited action
- Mandatory action
- Situation that needs attention
- Notes and reference information
- Useful information

Package Contents

This product's packaging contains the items listed below. Before using the product, check that all items are present. We make every effort to ensure that all products are packaged correctly. However, in the event that an item is missing or damaged, contact the retailer from whom you purchased the product.

- Keyboard x1
- AA alkaline battery x2
- User's Manual x1

Part Names

Connected device selection key

Pressing a key from [F1] to [F9] while holding down the **[Fn]** key will select the Bluetooth device that has been registered to that key. Allows this product to be used with the selected Bluetooth device.

PC1/PC2 switch key

Pressing the **[Tab]** key while holding down the **[Fn]** key will alternate the Bluetooth device that has been registered to the [F1] key with the Bluetooth device that has been registered to the [F2] key.

Alphanumeric/Kana key

Switches the character input mode for the iPad/iPhone/iPod touch to [Alphanumeric] English input or [Kana] Japanese input.

[Fn] key (Function key)

While the **[Fn]** key is held down, the functions indicated in the on the bottom of other keys can be used.

Pressing a key from [F1] to [F9] while holding down the **[Fn]** key will select the Bluetooth device that has been registered to that key.

Connect/Battery lamp

- Flashes when the keyboard is in a pairing standby state. (1 second ON/1 second OFF)
- Indicates when to replace the batteries. The lamp lights up if the remaining battery level gets low during use. (1 second ON/3 seconds OFF)

Safety Precautions

Observe these precautions carefully to avoid personal injury, damage, fire, and other problems.

	WARNING
	If a foreign object (water, metal chip, etc.) enters the product, immediately stop using the product and remove the batteries from the keyboard. If you continue to use the product under these conditions, it may cause a fire or electric shock.
	If an abnormality is found with this product (emission of heat, smoke or abnormal smell from the product), immediately stop using the product, shut down connected devices, and after thoroughly checking that heat from the product will not cause burns, remove the batteries from the keyboard. After doing this, contact the retailer from whom you purchased the product. If you continue to use the product under these conditions, it may cause a fire or electric shock.
	Do not drop or hit this product. If this product is damaged, immediately stop using it, turn it off, and remove the batteries. After doing this, contact the retailer from whom you purchased the product. If you continue to use the product in a damaged condition, it may cause a fire or electric shock.
	Do not attempt to disassemble, modify or repair this product by yourself. Doing so may cause a fire, electric shock, or product damage and may void the warranty.
	Do not put this product in fire, as the product may burst, resulting in a fire or injury.

	CAUTION
	Do not place this product in any of the following environments: <ul style="list-style-type: none">In a car exposed to sunlight, a place exposed to direct sunlight, or a place that becomes hot (around a heater, etc.)In a moist place or a place where condensation may occurIn an uneven place or a place exposed to vibrationIn a place where a magnetic field is generated (near a magnet, etc.)In a dusty place
	This product does not have a waterproof structure. Use and store this product in a place where the product body will not be splashed with water or other liquid. Rain, water mist, juice, coffee, steam or sweat may also cause product damage.

- Do not use this product with any device that may have a serious impact in the event this product fails.
- When you no longer need to use this product, be sure to dispose of it in accordance with the local ordinances and laws of your area.

■ Batteries

	CAUTION
	Use AA alkaline batteries, AA manganese batteries, or rechargeable AA nickel hydride batteries with this product.
	If this product will be unused for a long period of time, remove the batteries to avoid battery leakage and failure.

■ Cleaning the Keyboard

If the product becomes dirty, wipe it with a soft, dry cloth.

- Use of a volatile liquid (paint thinner, benzene, alcohol, etc.) may affect the material quality and colour of the product.

Cautions for Wireless Equipment

This product is wireless equipment using the entire range of the 2.4 GHz band and it is possible to avoid the band of mobile object identification systems. FH-SS is used for the radio wave method. The interference distance is 10 m. The 2.4 GHz band is also used by medical equipment, and wireless LAN equipment conforming to the IEEE 802.11b/11g/11n standard.

- Before using this product, check that there are no other "radio stations" operating nearby.
- If electromagnetic interference occurs between this product and other "radio stations", move this product to another location or stop using this product.

* Other "radio stations" refer to industrial, scientific and medical devices using the 2.4 GHz band like this product, other radio stations of this type, licensed radio station premises for mobile object identification system that is used in factory production lines, certain non-licensed low power radio stations and amateur radio stations.

	WARNING
	<ul style="list-style-type: none">Do not use this product with any device that may have a serious impact in the event of a malfunction. There are rare cases where an external radio wave at the same frequency or the radio wave emitted from a mobile phone causes this product to malfunction, slow down, or fail to operate.Do not use this product in a hospital or other locations where the use of radio waves is prohibited. The radio waves of this product may affect electronic and medical devices (e.g. pacemaker).The use of a wireless keyboard in an aircraft is prohibited by aviation law because doing so may interfere with flight safety. Turn off the keyboard before boarding an aircraft and do not use it in the aircraft.
	* ELECOM is not liable for any accident or social damages incurred by the failure of this product.

Initial Setup Procedure

When using this product for the first time, operate and configure this product in the order shown below.

- To use this product the connected device must support the Bluetooth HID profile or have a Bluetooth adapter that supports the HID profile connected.

- Installing/Replacing the Batteries
- Turning on the Keyboard
- Pairing the Keyboard with a Connected Device

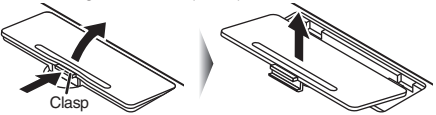
* Refer to the back of this sheet.

1 Installing/Replacing the Batteries

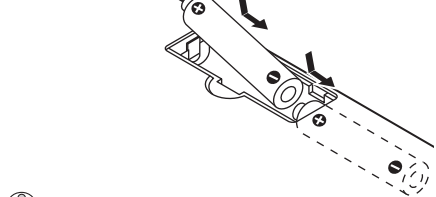
Before using this product, install two AA batteries in the keyboard.

- Remove the battery cover from the bottom of this product.

While holding down the clasp, lift up to remove.



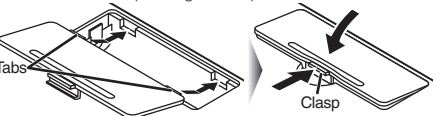
- Insert the batteries.



- Make sure that the polarity is correct.
- Do not mix different types of batteries or use old batteries with new batteries to avoid battery leakage and failure.

- Install the battery cover

Insert the tabs into the holes on the body of the keyboard and set it in the cover while pressing the clasp.



2 Turning on the Keyboard

Turn on the keyboard to use it.

- Slide the power switch on the bottom of the keyboard to the ON position.

- When not using the product, turn the keyboard off to save battery power. Slide the power switch to the OFF position.

- Power save mode
When key input does not occur for approximately two hours, this product will automatically switch to power save mode. It will return to normal mode once any key is pressed. Enter characters after this has occurred.

3 Pairing the Keyboard with a Connected Device

To connect this product to a connected device using Bluetooth, you need to pair the product with the connected device.

- Pairing involves registering Bluetooth devices (in this case, this product and connected device) with each other, and authorizing a connection with a registered device.
- This product can register and can be used interchangeably with multiple devices. Refer to the back of this sheet for details on using devices other than the iPad/iPhone/iPod touch.

Using iPhone/iPad/iPod touch

* The instructions below are based on iPhone 4 (iOS 4.3) user interface. The procedure is the same for other models.
* When using iPhone 3GS or iPod touch, you must update the software to iOS 4.0 or later.
For instructions on updating software, refer to iPhone 3GS or iPod touch manual.

- Touch [Settings].



- Touch [General].



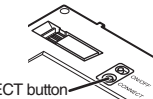
- Touch [Bluetooth].



- While the device is searching for other devices, hold down the **[Fn]** key and the [F1] key on this product simultaneously and then press the CONNECT button on the bottom of the keyboard. (Pressing the CONNECT button at the same time is not required.)

- When using this product with multiple Bluetooth devices, press a key from [F2] to [F9] in place of [F1]. The key that is pressed at this point will register the Bluetooth device that is currently being paired.
Usage scenario:
Possible to use various devices interchangeably by using the **[Fn]** key + a key from [F1] to [F9].

The Connect/Battery lamp flashes during the pairing procedure and turns off when the procedure is complete (step 7).



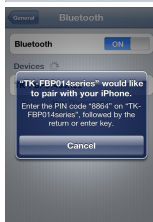
- Touch [TK-FBP014series Not Paired].

- If iPhone 3GS or iPod touch cannot find the keyboard, check that the software has been updated to iOS 4.0.

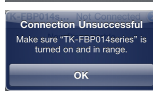


- Use this product to enter the PIN code that displays on the screen.

Enter the PIN code using the keyboard numerical keys, and press the "Enter" key.



- If the PIN code was not entered correctly, the screen shown to the right will display. Touch "OK", and repeat from step 3.



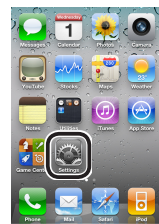
- Pairing is completed successfully when [TK-FBP014series] is shown as [Connected].

You can now use the keyboard.

- If connection fails

Connection may fail depending on iPad/iPhone/iPod touch status. In such cases, re-connect by following the procedure below.

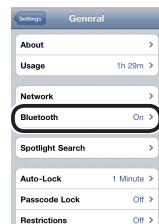
- Touch [Settings].



- Touch [General].



- Touch [Bluetooth].



- Touch [TK-FBP014series Not Connected].



- Reconnection is completed successfully when [TK-FBP014series] is shown as [Connected].



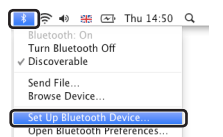
3 Pairing the Keyboard with a Connected Device

If using Macintosh®

* The screen will differ depending on the version of Mac OS, but the procedure is the same.

- 1 From the Bluetooth menu, click "Set up Bluetooth Device".

The Bluetooth Setup Assistant is displayed.



If the Bluetooth menu is not displayed, from the Apple menu, click "System Preferences". When the "System Preferences" window is displayed, click "Bluetooth", and then click **+** on the "Bluetooth" window.

If using Mac OS X 10.5.x, proceed to step 2.

If using Mac OS X 10.6.x, proceed to step 4.

- 2 Click **Continue**.



- 3 Select "Keyboard", and click **Continue**.

The system will start searching for Bluetooth devices to add.

- 4 Hold down the **Fn** key and the **[F1]** key on this product simultaneously and then press the **CONNECT** button on the bottom of the keyboard. (Pressing the **CONNECT** button at the same time is not required.)

When using this product with multiple Bluetooth devices, press a key from **[F2]** to **[F9]** in place of **[F1]**. The key that is pressed at this point will register the Bluetooth device that is currently being paired.

Usage scenario:
Possible to use various devices interchangeably by using the **Fn** key + a key from **[F1]** to **[F9]**.

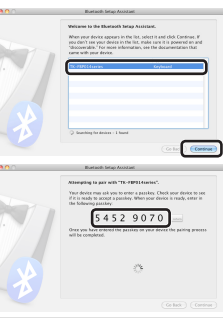
The Connect/Battery lamp flashes green during the pairing procedure and turns off when the procedure is complete (step 7).



If a message saying that registration failed is displayed, check that this product is turned on, and then click **Continue**.

- 5 Click "TK-FBP014series", and then click **Continue**.

A passkey will be displayed on the screen.

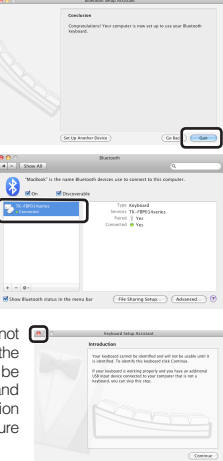


- 6 Use this product to enter the passkey that displays on the screen.

Enter the passkey using the keyboard numerical keys, and press the "Enter" key.

- 7 Click **Quit**.

When registration is completed successfully, "TK-FBP014series" appears in the "Bluetooth" window.



If the keyboard is not properly recognized, the window on the right will be displayed. Click **+** and then repeat the operation starting from procedure 1.

You can now use the keyboard.

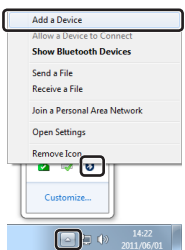
If using Windows®

* This section describes the procedure when using the standard Windows® Bluetooth function.

■ If using Windows® 7

- 1 In the notification area, click then right-click the Bluetooth icon and click "Add a Device".

The "Add a Device" window is displayed.



- If is displayed in the notification area, right-click and click "Add a Device".
- If no icon is displayed, click the "Start" button, click "Control Panel", and then click "Add a Device".

- 2 Hold down the **Fn** key and the **[F1]** key on this product simultaneously and then press the **CONNECT** button on the bottom of the keyboard. (Pressing the **CONNECT** button at the same time is not required.)

When using this product with multiple Bluetooth devices, press a key from **[F2]** to **[F9]** in place of **[F1]**. The key that is pressed at this point will register the Bluetooth device that is currently being paired.

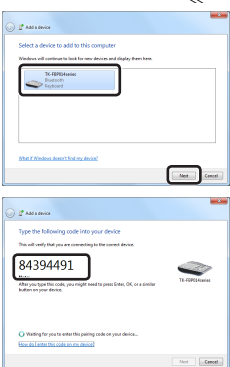
Usage scenario:
Possible to use various devices interchangeably by using the **Fn** key + a key from **[F1]** to **[F9]**.

The Connect/Battery lamp flashes during the pairing procedure and turns off when the procedure is complete (step 5).



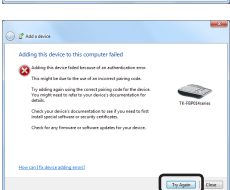
- 3 Click "TK-FBP014series", and then click **Next**.

A code will be displayed on the screen.



- 4 Use this product to enter the code that displays on the screen.

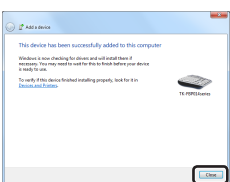
After the code has been entered using the number keys on the keyboard, press the **[Enter]** key.



If the code could not be entered completely, the window on the right will be displayed. Click **Try Again**, and then repeat the operation starting from procedure 3.

Once the code is properly entered, the window on the right will be displayed.

- 5 Click **Close**.

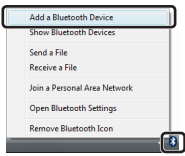


You can now use the keyboard.

■ If using Windows Vista® SP2

- 1 In the notification area, right-click the Bluetooth icon and click "Add a Bluetooth Device".

The "Add Bluetooth Device Wizard" is displayed.



If the icon is not displayed, click the "Start" button, click "Control Panel", click "Hardware and Sound", and then click "Bluetooth Devices". When the "Bluetooth Devices" window is displayed, click "Add".

- 2 Hold down the **Fn** key and the **[F1]** key on this product simultaneously and then press the **CONNECT** button on the bottom of the keyboard. (Pressing the **CONNECT** button at the same time is not required.)

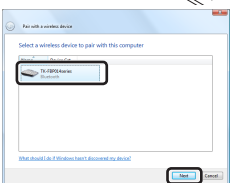
When using this product with multiple Bluetooth devices, press a key from **[F2]** to **[F9]** in place of **[F1]**. The key that is pressed at this point will register the Bluetooth device that is currently being paired.

Usage scenario:
Possible to use various devices interchangeably by using the **Fn** key + a key from **[F1]** to **[F9]**.

The Connect/Battery lamp flashes during the pairing procedure and turns off when the procedure is complete (step 5).



- 3 Click "TK-FBP014series", and then click **Next**.



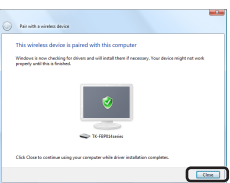
- 4 Use this product to enter the code that displays on the screen.

After the code has been entered using the number keys on the keyboard, press the **[Enter]** key.

If the code could not be entered completely, the window on the right will be displayed. Click **Try Again**, and then repeat the operation starting from procedure 3.

Once the code is properly entered, the window on the right will be displayed.

- 5 Click **Close**.



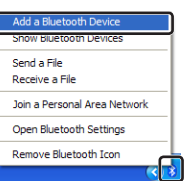
You can now use the keyboard.

■ If using Windows Vista® (SP1 and earlier) or Windows® XP

* The screen will differ depending on the OS, but the procedure is the same.

- 1 In the system tray or the notification area, right-click the Bluetooth icon and click "Add a Bluetooth Device".

The "Add Bluetooth Device Wizard" is displayed.



If the icon is not displayed, click the "Start" button, click "Control Panel", click "Hardware and Sound" (Printers and Other Hardware), and then click "Bluetooth Devices". (Pressing the **CONNECT** button at the same time is not required.) When the "Bluetooth Devices" window is displayed, click "Add".

- 2 Select the "My device is set up and ready to be found" check box and then click **Next >**.

The system will start searching for Bluetooth devices to add.



- 3 While the torch icon is displayed, hold down the **Fn** key and the **[F1]** key on this product simultaneously and then press the **CONNECT** button on the bottom of the keyboard.

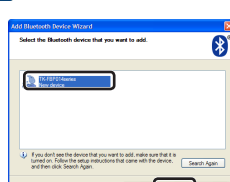
When using this product with multiple Bluetooth devices, press a key from **[F2]** to **[F9]** in place of **[F1]**. The key that is pressed at this point will register the Bluetooth device that is currently being paired.

Usage scenario:
Possible to use various devices interchangeably by using the **Fn** key + a key from **[F1]** to **[F9]**.

The Connect/Battery lamp flashes during the pairing procedure and turns off when the procedure is complete (step 7).

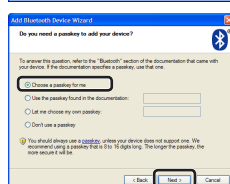


- 4 Click "TK-FBP014series", and then click **Next >**.



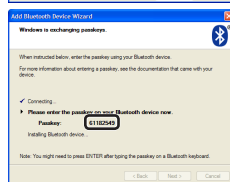
- 5 Select "Choose a passkey for me" and then click **Next >**.

A passkey will be displayed on the screen.



- 6 Use this product to enter the passkey that displays on the screen.

Enter the passkey using the keyboard numerical keys, and press the "Enter" key.



If the passkey was not entered correctly, the screen shown to the right will display. Click **< Back**, and then repeat the operation starting from procedure 4.

Once the passkey is properly entered, the window on the right will be displayed.

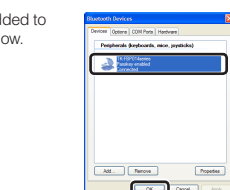
- 7 Click **Finish**.



"TK-FBP014series" will be added to the "Bluetooth Devices" window.

- 8 Click **OK**.

You can now use the keyboard.



Troubleshooting

When the keyboard does not work correctly

■ When text cannot be entered or keyboard does not work/is unstable

→ When key input does not occur for approximately two hours, this product will switch to power save mode. Enter characters after pressing any key to return to normal mode.

→ Check that this product and the connected device's Bluetooth function or Bluetooth adapter are turned on.

→ Check pairing status to ensure that this product is paired correctly with the connected device and that pairing has not been cancelled.

- The the Connect/Battery lamp flashes during the pairing procedure and turns off when the procedure is complete.
- For details on Bluetooth connection devices and Bluetooth adapters, refer to the relevant instruction manuals. Alternatively, contact the manufacturer.

→ The connected device and the keyboard are too far apart or there is a possibility that the connected device is facing in a direction from which it cannot receive radio signals.

Adjust the position of the connected device

The operable range of this product is the area within a circle with a radius of 10 m from the connected device.

Depending on the usage environment, the keyboard may not operate even when it is within approximately 10 m of the connected device. In such cases, move the keyboard closer to the connected device until operation stabilises.

→ When using this product on a metallic surface such as a steel desk, radio wave outreach may be shortened. In such cases, move the keyboard closer to the connected device until keyboard operation stabilises.

→ Interference may occur if multiple units of this product are used together or if this product is used with other wireless devices. In this case, change the channel of other wireless devices.

→ Operation becomes unstable when battery power is low. Refer to "Installing/Replacing the Batteries", and replace the batteries as soon as possible.

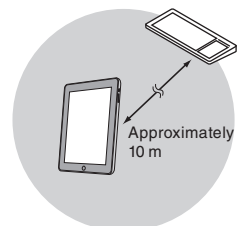
• The alkaline batteries supplied with this product are for checking product operation. These batteries may discharge and drain during storing and shipping.

• When the remaining battery level gets low, the Connect/Battery lamp lights up.

* When not using the product, turn the keyboard off to save battery power.

→ Check that the device that you wish to use with this product has been registered.

Simultaneously press the **Fn** key and any key from **[F1]** to **[F9]** and then select the registered device.



ELECOM CO., LTD.

1-1 Fushimi-machi 4-Chome Chuoku, Osaka Japan 541-8765

URL: <http://www.elecom.co.jp/global/overseas@elecom.co.jp>

宜麗客(上海)貿易有限公司
上海市徐匯區肇嘉浜路1065甲号飛雕國際大廈704号

電話 : 86-21-33680011
FAX : 86-21-64271706

URL : <http://www.elecom-china.com/>

ELECOM Korea Co., Ltd.

5F Suam Bldg. 1358-17, Seocho2-dong, Seocho-gu, Seoul 137-862, Korea

TEL : 1588-9514

FAX : (02)3472-5533

URL : www.elecom.co.kr

ELECOM Singapore Pte. Ltd

33 UBI AVENUE 3 # 03-56. VERTEX SINGAPORE (408868)

TEL : (65)-6347-7747

FAX : (65)-6753-1791

ELECOM India Pvt. Ltd.

408-Deepali Building, 92- Nehru Place, New Delhi-110 019, India

TEL: 011-40574543

e-mail: support@elecom-india.com

URL: <http://www.elecom-india.com/>

Bluetooth Pantograph Keyboard

TK-FBP014E series

1st edition, January 10, 2012

ELECOM Co., Ltd.

- This manual is copyright of ELECOM Co., Ltd.
- Unauthorised copying and/or reproducing of all or part of this manual is prohibited.
- The specifications and appearance of this product may be changed without prior notice for product improvement purposes.
- ELECOM Co., Ltd. shall bear no responsibility for any and all affects resulting from the use of this product regardless of the above reasons.
- Export or service transaction permission under the Foreign Exchange and Foreign Trade Control Law is required in order to export this product or parts of this product that constitute strategic materials or services.
- Windows and Windows Vista are trademarks of the Microsoft group of companies.
- iPad, iPhone, iPod touch, Mac OS and Macintosh are trademarks of Apple Inc.
- "PlayStation" and "PS3" are trademarks of Sony Computer Entertainment Co., Ltd.
- The Bluetooth® word mark and logo are trademarks owned by Bluetooth SIG. Inc., and used with permission by ELECOM Co., Ltd.
- Company names, product names, and other names in this manual are generally trademarks or registered trademarks.