

Bluetooth® Pantograph Keyboard TK-FBP030E Series User's Manual

Thank you for purchasing the ELECOM Bluetooth® Pantograph Keyboard. This product employs an English keyboard layout and Bluetooth® wireless technology. This manual describes the operating instructions and safety precautions for using this product. Ensure that you have read this manual before using the product. After reading this manual, store it somewhere safe for future reference.

* Except in certain cases, the TK-FBP030E Series is referred to as "this product" in this manual.

■ Meaning of symbols

	DANGER	Not following the cautions described here poses a high degree of danger which may result in death or serious bodily injury from fire or electric shock.
	WARNING	Failure to observe precautions may result in serious personal injury or death due to fire, electric shock, or other causes.
	CAUTION	Failure to observe precautions may result in personal injury due to electric shock or other causes, and may damage other equipment.

- Prohibited action
- Mandatory action
- Situation that needs attention
- Notes and reference information

Safety Precautions

Observe these precautions carefully to avoid personal injury, damage, fire, and other problems.

	DANGER	Always use the charging cable supplied by ELECOM, and follow the charging procedure as instructed. Charging using a cable or procedure other than instructed can lead to battery overheating, leaking, or explosion.
		Do not tamper with or attempt to take apart the product. This may result in fire or electric shock.
		Do not use this product if it is leaking. If the internal battery is leaking, immediately stop use of the product. This can pose a risk of overheating and/or damage.

Part Names

Function key

Enable to adjust the system volume or operate iTunes, etc by pressing the [F1] to [F7] key while pressing down the [Fn] key.

Search (iPad2, iPad, iPhone, iPod touch only)
Displays the search screen and allows you to search for a file or image.

To previous track

When you press this button during playback of music or other media, you move to the previous track. *

Playback/Pause

Plays back media such as music. When you press this button during playback, playback is stopped temporarily. *

To next track

When you press this button during playback of music or other media, you move to the next track. *

Mute

Turns off all output sound for the system. Press again to take off mute.

Volume

Decrease the system volume.

Volume

Increase the system volume

* When a program such as iTunes is active

[Fn] key (Function key)

While the [Fn] key is held down, the functions indicated in on the bottom of other keys can be used.
 are shown as an explanation, and are not actually displayed.

! DANGER

- Immediately stop use of the product if you notice any abnormal operation. Do not use this product if you notice a leaking battery, odd colour changes, warping, or any other abnormalities. Continuing to use the product under these conditions may result in overheating or explosion.
- If liquid substance from this product comes into contact with any part of your body or clothing, immediately flush and wash the contacted area with clean water. Contact between your skin and any liquid inside the internal battery may result in skin damage.
- In the case that liquid from the internal battery enters your eyes, do not rub, as this may cause loss of vision. Immediately flush the contacted area with clean water and seek treatment from a physician as soon as possible. This may result in electric shock or injury.
- Do not plug/unplug this product with wet hands. This may result in electric shock or injury.
- Only use this product at the specified rated voltage. Using this product outside of the specified rated voltage range may result in overheating, electric shock, or injury.

! WARNING

- If a foreign object (water, metal chip, etc.) enters the product, immediately stop using the product. If you continue to use the product under these conditions, it may cause a fire or electric shock.
- If an abnormality is found with this product (emission of heat, smoke or abnormal smell from the product), immediately stop using the product, shut down the computer, and after thoroughly checking that heat from the product will not cause burns. After doing this, contact the retailer from whom you purchased the product. If you continue to use the product under these conditions, it may cause a fire or electric shock.
- Do not drop or hit this product. If this product is damaged, immediately stop using it and turn it off. After doing this, contact the retailer from whom you purchased the product. If you continue to use the product in a damaged condition, it may cause a fire or electric shock.
- Do not attempt to disassemble, modify or repair this product. Doing so may cause a fire, electric shock, or product damage and may void the warranty.
- Do not put this product in fire, as the product may burst, resulting in a fire or injury.

! CAUTION

- Do not place this product in any of the following environments:
 - In a car exposed to sunlight, a place exposed to direct sunlight, or a place that becomes hot (around a heater, etc.)
 - In a moist place or a place where condensation may occur
 - In an uneven place or a place exposed to vibration
 - In a place where a magnetic field is generated (near a magnet, etc.)
 - In a dusty place
- This product does not have a waterproof structure. Use and store this product in a place where the product body will not be splashed with water or other liquid. Rain, water mist, juice, coffee, steam or sweat may also cause product damage.

- Do not use this product with any device that may have a serious impact in the event this product fails.
 - When you no longer need to use this product, be sure to dispose of it in accordance with the local ordinances and laws of your area.

■ Cleaning the Keyboard

If the product becomes dirty, wipe it with a soft, dry cloth.

- Use of a volatile liquid (paint thinner, benzene, alcohol, etc.) may affect the material quality and colour of the product.

Cautions for Wireless Equipment

This product is wireless equipment using the entire range of the 2.4 GHz band and it is possible to avoid the band of mobile object identification systems. GFSK is used for the radio wave method. The interference distance is 10 m.

The 2.4 GHz band is also used by medical equipment, and wireless LAN equipment conforming to the IEEE 802.11b/11g/11n standard.

- Before using this product, check that there are no other "radio stations" operating nearby.
- If electromagnetic interference occurs between this product and other "radio stations", move this product to another location or stop using this product.
- * Other "radio stations" refer to industrial, scientific and medical devices using the 2.4 GHz band like this product, other radio stations of this type, licensed radio station premises for mobile object identification system that is used in factory production lines, certain non-licensed low power radio stations and amateur radio stations.

! WARNING

- Do not use this product with any device that may have a serious impact in the event of a malfunction. There are rare cases where an external radio wave at the same frequency or the radio wave emitted from a mobile phone causes this product to malfunction, slow down, or fail to operate.
- Do not use this product in a hospital or other locations where the use of radio waves is prohibited. The radio waves of this product may affect electronic and medical devices (e.g. pacemaker).
- The use of a wireless keyboard in an aircraft is prohibited by aviation law because doing so may interfere with flight safety. Turn off the keyboard before boarding an aircraft and do not use it in the aircraft.
- * ELECOM is not liable for any accident or social damages incurred by the failure of this product.

Package Contents

This product's packaging contains the items listed below. Before using the product, check that all items are present. We make every effort to ensure that all products are packaged correctly. However, in the event that an item is missing or damaged, contact the retailer from whom you purchased the product.

- Keyboard x1
- USB charging cable (USB A⇔mini B 0.9 m) x1
- User's Manual x1

Initial Setup Procedure

When using this product for the first time, operate and configure this product and the PC in the order shown below.

- To use this product the connected device must support the Bluetooth HID profile or have a Bluetooth adapter that supports the HID profile connected.

1 Charging the Keyboard

2 Turning on the Keyboard

3 Pairing the Keyboard with a Connected Device

* Refer to the back of this sheet.

1 Charging the Keyboard

The keyboard must be charged before using for the first time, or if you have not used it for an extended period of time. Charge with the included USB charging cable.

- Approx. 3 hours of charging time are required for full charge. If the lamp doesn't turn off after 3 hours, remove the USB charging cable and stop charging one time. Charging for more than 3 hours can result in shortening of the battery life, or device malfunction.

1 Connect the included USB charging cable (mini-B connector) to the connector on the right side of this product.

2 Connect the included USB charging cable (A connector) to the USB port of the PC.

- Carefully check the orientation of the connector and the place where you will connect the USB connector.

3 Turn on the PC.

The charging indicator lamp lights red and charging begins. When charging is complete, the lamp turns off.

- The charging is not completed after the specified charging time, stop charging. Continuing to charge more over the set time may lead to battery leakage, overheating, damage, or fire.

2 Turning on the Keyboard

Turn on the keyboard to use it.

1 Slide the power switch to the ON position.

The connection/battery level indicator lamp lights blue for about 3 seconds.

- When not using the product, turn the keyboard off to save battery power. Slide the power switch to the OFF position.

3 Pairing the Keyboard with a Connected Device

To connect this product to a connected device using Bluetooth, you need to pair the product with the connected device.

- Pairing involves registering Bluetooth devices (in this case, this product and iPhone/iPad/iPod touch) with each other, and authorizing a connection with a registered device.
- This product supports multi-pairing, which allows multiple Bluetooth devices to be recorded in memory. (Maximum of four) Second to fourth devices can be paired by registering each device and then performing the same pairing procedure.
- * If the pairing procedure is performed when four devices have already been registered, settings for the device that was first paired are deleted.

Using iPad2/iPad/iPhone/iPod touch

- * The instructions below are based on iPad2 (iOS 5.0.1) user interface. The procedure is the same for other models.
- * When using iPhone 3GS or 3G iPod touch, you must update the software to iOS 4.0 or later. For instructions on updating software, refer to iPhone 3GS or 3G iPod touch manual.
- * This product cannot be used with iPhone 3G or with first and second generation iPod touch.

1 Touch [Settings].



2 Touch [General].

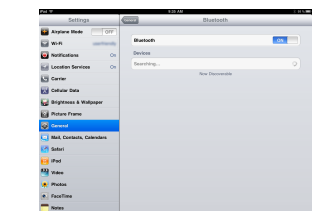
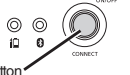


3 Touch [Bluetooth].



4 While the device is searching for other devices, press the CONNECT button on this product.

The connection/battery level indicator lamp flashes during the pairing procedure and turns off when the procedure is complete (step 7).



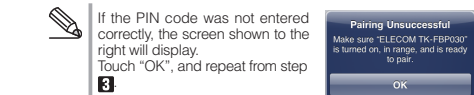
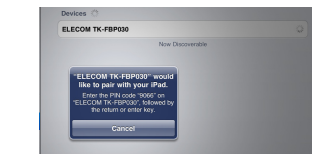
5 Touch [ELECOM TK-FBP030 Not Paired].



- If iPhone 3GS or iPod touch cannot find the keyboard, check that the software has been updated to iOS 4.0 or later.

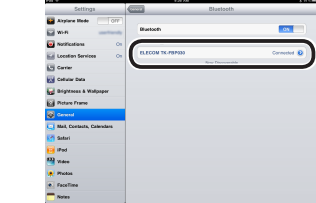
6 Use this product to enter the PIN code that displays on the screen.

Enter the PIN code using the keyboard numerical keys, and press the "Enter" key.



7 Connection/battery level indicator lamp turns off.

Pairing is completed successfully when [ELECOM TK-FBP030] is shown as [Connected].



You can now use the keyboard.

If connection fails
Connection may fail depending on iPad/iPhone/iPod touch status. In such cases, re-connect by following the procedure below.

1 Touch [Settings].



2 Touch [General].



3 Touch [Bluetooth].



4 Touch [ELECOM TK-FBP030 Not Connected].



5 Connection/battery level indicator lamp turns off.

Reconnection is completed successfully when [ELECOM TK-FBP030] is shown as [Connected].

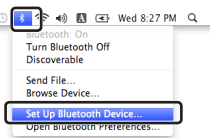


3 Pairing the Keyboard with a Connected Device

When using Mac OS X

■When using Mac OS 10.6.x

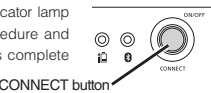
- 1 From the Bluetooth menu, click [Set up Bluetooth Device...].
The Bluetooth Setup Assistant is displayed.



If the Bluetooth menu is not displayed, from the Apple menu, click [System Preferences]. When the [System Preferences] window is displayed, click [Bluetooth], and then click [+] on the [Bluetooth] window.

- 2 Press the CONNECT button for 1 sec. or more.

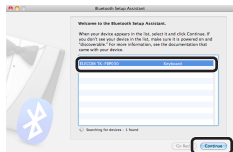
The connection/battery level indicator lamp flashes during the pairing procedure and turns off when the procedure is complete (step 5).



If a message saying that registration failed is displayed, check that this product is turned on, and then click [Continue].

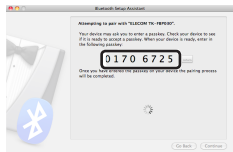
- 3 Select [ELECOM TK-FBP030], and click [Continue].

The passkey is displayed on the screen.

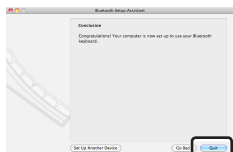


- 4 Use this product to enter the passkey that displays on the screen.

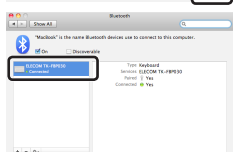
Enter the passkey using the keyboard numerical keys, and press the "Enter" key.



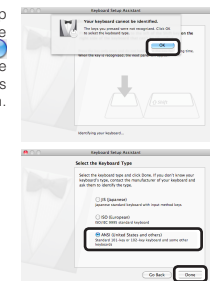
- 5 Click [Quit].



When registration is completed successfully, [ELECOM TK-FBP030] appears in the [Bluetooth] window.



If the keyboard setup assistant cannot detect the keyboard, click [OK] and select [ANSI] from the list of keyboards that is displayed on the screen. Then click [Done].



You can now use the keyboard.

■When using Mac OS 10.5.x

- 1 From the Bluetooth menu, click [Set up Bluetooth Device].
The Bluetooth Setup Assistant is displayed.



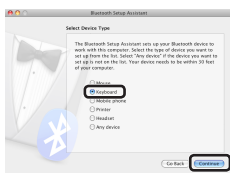
If the Bluetooth menu is not displayed, from the Apple menu, click [System Preferences]. When the [System Preferences] window is displayed, click [Bluetooth], and then click [+] on the [Bluetooth] window.

- 2 Click [Continue].



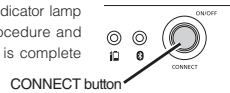
- 3 Select [Keyboard], and click [Continue].

The system starts searching for Bluetooth devices to add.



- 4 Press the CONNECT button for 1 sec. or more.

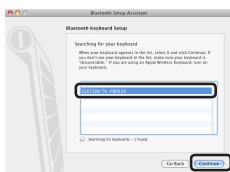
The connection/battery level indicator lamp flashes during the pairing procedure and turns off when the procedure is complete (step 7).



If a message saying that registration failed is displayed, check that this product is turned on, and then click [Continue].

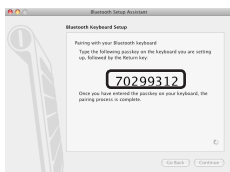
- 5 Select [ELECOM TK-FBP030], and click [Continue].

The passkey is displayed on the screen.



- 6 Use this product to enter the passkey that displays on the screen.

Enter the passkey using the keyboard numerical keys, and press the "Enter" key.



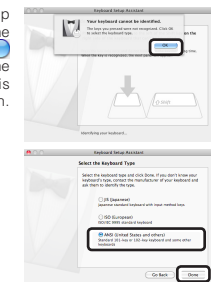
- 7 Click [Quit].



When registration is completed successfully, [ELECOM TK-FBP030] appears in the [Bluetooth] window.



If the keyboard setup assistant cannot detect the keyboard, click [OK] and select [ANSI] from the list of keyboards that is displayed on the screen. Then click [Done].



You can now use the keyboard.

Troubleshooting

When the keyboard does not work correctly

■When text cannot be entered or keyboard does not work/is unstable

- Check that this product and the connected device's Bluetooth function or Bluetooth adapter are turned on.
- Check pairing status to ensure that this product is paired correctly with the connected device and that pairing has not been cancelled.

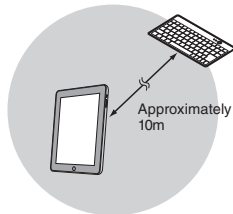


- The connection/battery level indicator lamp flashes green during the pairing procedure and turns off when the procedure is complete.
- For details on the PC's Bluetooth function and Bluetooth adapter, refer to the relevant instruction manuals. Alternatively, contact the manufacturer.

- The connected device and the keyboard are too far apart or there is a possibility that the connected device is facing in a direction from which it cannot receive radio signals.

Adjust the position of the connected device.

The operable range of this product is the area within a circle with a radius of 10 m from the connected device. Depending on the usage environment, the keyboard may not operate even when it is within approximately 10 m of the connected device. In such cases, move the keyboard closer to the connected device until operation stabilises.



- When using this product on a metallic surface such as a steel desk, radio wave outreach may be shortened. In such cases, move the keyboard closer to the connected device until keyboard operation stabilises.
- Interference may occur if multiple units of this product are used together or if this product is used with other wireless devices. In this case, change the channel of other wireless devices.
- If battery level becomes low, mouse operation may become unstable. Refer to "Charging the Keyboard" on front page opposite to charge the battery.
 - If internal battery level becomes low, the connection/battery level indicator lamp begins flashing red.
 - * When not using the product, turn the keyboard off to save battery power.

Internal battery troubleshooting

■Charging lamp does not turn on when charging.

- Start up the PC if it is not turned on.
- If the PC is in stand-by mode, take it out of stand-by.
- The PC USB port may not output a sufficient amount of power for charging. Try disconnecting the product from the USB port that it is connected to.

■Charging takes longer than the specified charging time.

- If the temperature is too high or too low when charging, charging may not perform correctly. Charge in an environment between 5 and 40°C.

■Internal battery only lasts a short time

- If the internal battery can only be used for a short time even when fully charged, this is the condition of the battery life.

Basic Specifications

Product name	Bluetooth® Pantograph Keyboard
Article No.	TK-FBP030E series
Supported devices	• iPad2, iPad, iPhone4/4S, 4G iPod touch • iPhone 3GS and 3G iPod touch (32GB/64GB) with software updated to iOS4.0 or later • Mac OS X(10.5-10.5.8, 10.6-10.6.8, 10.7-10.7.2) * Cannot be used with iPhone 3G or first and second generation iPod touch. * Depending on the model of the device being used, the assigned function for various keys and the actual functions which they perform when pressed may differ.
Connection method	Bluetooth® wireless
Compliant standard	Bluetooth® v2.0 Class 2
Profile	HID (Human Interface Device)
Radio frequency	2.4 GHz bandwidth
Radio wave method	GFSK modulation
Radio wave outreach	Non-magnetic substance (e.g. wooden desk): Approx. 10 m Magnetic substance (e.g. metal desk): Approx. 3 m * Values indicated are those obtained by ELECOM and are not guaranteed.
No. of keys	75 (English layout)
No. of function keys	10
Key type	Pantograph
Key pitch	17.4 mm
Key stroke	1.7 mm
Dimensions	234.8 (W) x 124.4 (D) x 10.7 (H) mm (Not including stand)
Weight	Approx. 165 g * Not including cable
Operating temperature/humidity	5 to 40°C, 90% RH max. (no condensation)
Storing temperature/humidity	-10 to 60°C, 90% RH max. (no condensation)
Types of batteries	Rechargeable Lithium-Ion battery (internal battery in this product)
Battery amount	240 mAh
Charging time	Approx. 3 hours
Operating time	Approx. 2 week operation time (when fully charged) * Values indicated are those obtained by ELECOM and are not guaranteed.

ELECOM CO., LTD.

1-1 Fushimi-machi 4-Chome Chuoku, Osaka Japan 541-8765

URL: <http://www.elecom.co.jp/global/>

overseas@elecom.co.jp

宜麗客(上海)貿易有限公司
上海市徐匯區肇嘉浜路1065甲號飛雕國際大廈704號
電話：86-21-33680011
FAX：86-21-64271706
URL：http://www.elecom-china.com/
ELECOM Korea Co., Ltd.
5F Suam Bldg. 1358-17, Seocho2-dong, Seocho-gu, Seoul 137-862, Korea
TEL：1588-9514
FAX：(02)3472-5533
URL：www.elecom.co.kr

ELECOM Singapore Pte. Ltd
33 UBI AVENUE 3 # 03-56. VERTEX SINGAPORE (408868)
TEL：(65)-6347-7747
FAX：(65)-6753-1791
ELECOM India Pvt. Ltd.
408-Deepali Building, 92- Nehru Place, New Delhi-110 019, India
TEL: 011-40574543
e-mail: support@elecom-india.com
URL: <http://www.elecom-india.com/>

Bluetooth® Pantograph Keyboard
TK-FBP030E series
User's manual
1st edition, January 10, 2012
ELECOM Co., Ltd

- This manual is copyright of ELECOM Co., Ltd.
- Unauthorised copying and/or reproducing of all or part of this manual is prohibited.
- The specifications and appearance of this product may be changed without prior notice for product improvement purposes.
- ELECOM Co., Ltd. shall bear no responsibility for any and all affects resulting from the use of this product regardless of the above reasons.
- Export or service transaction permission under the Foreign Exchange and Foreign Trade Control Law is required in order to export this product or parts of this product that constitute strategic materials or services.
- iPad, iPhone, and iPod touch are trademarks of Apple Inc.
- The Bluetooth word mark and Bluetooth logo are all trademarks that are owned by the Bluetooth SIG and licensed out for use to ELECOM Co., Ltd. that are incorporating Bluetooth wireless technology into their products
- Company names, product names, and other names in this manual are generally trademarks or registered trademarks.