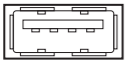


When using Mac OS X®

Step1 Check USB ports

Check the USB port on your computer.



USB port



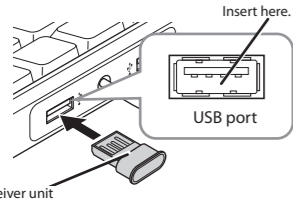
- Any USB port may be used.
- This product can be connected to a USB hub. However, it may not work depending on the power supply capability of the USB hub.

Step2 Installing the Receiver Unit

1 Activate the Macintosh.

- Wait until Mac OS X has started up completely.

2 Insert the receiver unit into a USB port on your Macintosh.



Receiver unit



- Carefully check the orientation of the connector and the place where you will connect the receiver unit.
- If you feel strong resistance when inserting the receiver unit, check that the shape and orientation of the connector is correct. Using excessive force may damage the connector and cause injury.
- Do not touch the USB connector terminals.

3 The mouse driver is installed automatically.

Step3 Checking wheel operation

Check that the vertical and horizontal scrolling functions are working correctly in Safari.

1 Click the Safari icon in the Dock.

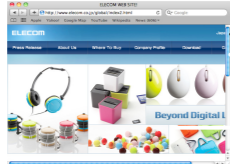
Safari will launch.



- If Safari is not in the Dock, double-click the Safari icon in the Applications folder.

2 Display your favourite web site in Safari and change the size of the window so that the vertical and horizontal scrollbars appear.

* The sample website used here is the ELECOM homepage.



3 Scroll the wheel back and forth.



The mouse is operating normally if the screen moves up and down as you scroll the wheel.



- In applications that do not support scrolling, the screen will not move when you scroll the wheel.

Troubleshooting

When the product appears to be malfunctioning

■ When the mouse pointer on the screen does not move, or moves unstably, when the mouse is moved

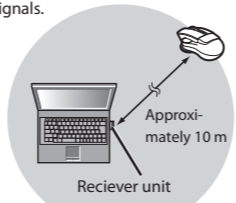
➔ It is possible that the reflectivity of the surface on which this product is being used is not suitable for a laser mouse.

➔ When using this product on a metallic surface such as a steel desk, radio wave outreach may be shortened. In such cases, move the receiver unit closer to the mouse until mouse operation stabilises.

➔ It is possible that the receiver unit is not connected correctly to the USB port. Disconnect the receiver unit from the USB port and reconnect it.

➔ The receiver unit and the mouse body are too far apart or there is a possibility that the receiver unit is facing in a direction from which it cannot receive radio signals.

Adjust the position of the receiver unit. The operable range of this product is the area within a circle with a radius of 10 m from the receiver unit. Depending on the usage environment, the mouse may not operate even when it is within approximately 10 m of the receiver unit. In such cases, move the mouse closer to the receiver unit until operation stabilises.



➔ Interference may occur if multiple units of this product are used together or if this product is used with other wireless devices. In this case, change the channel of other wireless devices.

(Multiple units of this product have an automatic channel avoidance function.)

➔ Operation becomes unstable when battery power is low. See "Installing-Replacing the Battery" on the reverse of this sheet, and replace the batteries as soon as possible.

- The alkaline batteries supplied with this product are for checking product operation. These batteries may discharge and drain during storing and shipping.

* When not using the mouse, turn it off to save battery power.

➔ Check that the remaining battery level indicator lamp is on.

When the mouse is turned on, the remaining battery level indicator lamp is illuminated in red for a certain period.

If the lamp does not turn on, it is possible that the battery is flat. When the battery is low, the lamp flashes continuously.

➔ Check that the power switch is correctly in the ON position.

If the power switch is not slid all the way to the correct ON position, the mouse may not turn on.

➔ It is possible that the standard Windows mouse driver did not install correctly and that this product is detected as an unknown device by Windows®. This product is usually detected as a USB human interface device. If it is detected as an unknown device, see "Removing an unknown device," and after removing the device from Device Manager, repeat "Step 2 - Installing the Receiver Unit" on the front of this sheet.

➔ If you have installed drivers and settings utilities produced by the original manufacturer for a previous mouse, uninstall them first. This product may not operate correctly if a driver made by another company is installed. See the instruction manual that was supplied with your previous mouse for uninstall instructions.

➔ It is possible that the driver is conflicting with another driver such as that for a laptop touch pad. To use this product correctly, you must delete the touch pad driver. However, if you delete this driver, you may not be able to use the touch pad or touch pad functions. Contact the PC manufacturer for more details.

■ The wheel moves, but the mouse cursor does not

➔ In certain applications that do not support the scrolling function, the mouse cursor will not move when you move the wheel.

Removing an unknown device

If the standard Windows mouse driver did not install correctly and this product is detected as an unknown device, remove the unknown device from Device Manager, and then repeat "Step 2 - Installing the Receiver Unit" on the front of this sheet.



- If there are multiple unknown devices, before removing a device, check that it is actually this product. Disconnect the receiver unit and check which unknown device disappears. The device that disappears is this product.
- If the unknown device does not disappear even after you have deleted the driver following the instructions below, it is possible that there is something wrong with the PC. Contact the PC manufacturer.

With the receiver unit connected to the PC, follow the procedure below to remove the unknown device.

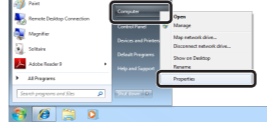
* Be sure to log on using an administrator account when Windows starts up.

* Screen display may differ depending on operating system, but the procedure remains the same.

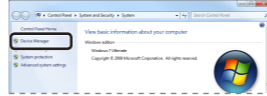
1 Display Device Manager.

• Windows® 7 and Windows Vista®

- From the [Start] menu, right-click [Computer].
- Click [Properties].

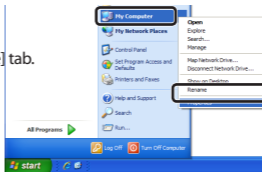


3. Click [Device Manager].

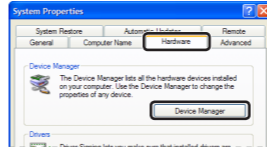


• Windows® XP

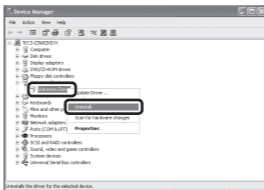
- From the [Start] menu, right-click [My Computer].
- Click [Properties].
- Click the [Hardware] tab.



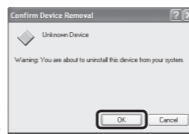
4. Click [Device Manager].



2 The Device Manager window appears. Right-click the unknown device, and click [Uninstall].



3 Click [OK].



4 Disconnect the receiver unit and restart the PC

5 Repeat the procedure from "Step 2 - Installing the Receiver Unit" on the front of this sheet.

Basic specifications

Product name	Wireless Laser Mouse
Article No.	M-SN2DL Series
OS	Windows 7, Windows Vista (up to SP2), Windows XP (SP2 to SP3) Mac OS X (10.5 to 10.5.8, 10.6 to 10.6.4)
Resolution (dpi)	1600
Interface	USB
Radio frequency	2.4 GHz bandwidth
Radio wave method	DSSS modulation
Radio wave outreach	Non-magnetic substance (e.g. wooden desk): Approx. 10 m Magnetic substance (e.g. metal desk): Approx. 3 m * Test values in the ELECOM environment
Mouse body dimensions	75(W) x 110 (D) x 38 (H) mm
Receiver unit dimensions	16 (W) x 19 (D) x 8 (H) mm
Operating temperature/ humidity	5 to 40°C, 90% RH max. (no condensation)
Storing temperature/ humidity	-10 to 60°C, 90% RH max. (no condensation)
Batteries	AAA alkaline battery, AAA manganese battery, AAA nickel hydride battery
Operating time	Measure of the operating time when an AAA alkaline battery is used Continuous operating time: Approx. 71 hours Continuous standby time: Approx. 95 days Estimated serviceable time: Approx. 32 days (when the PC is operated for eight hours a day and 25% of the PC operation is assigned to mouse operation)

당해 무선설비는 운용 중 전파혼신 가능성이 있음 .

Б 급 기기 (가정용 정보통신기기)
이 기기는 가정용으로 전자파적합등록을 한 기기로서
주거지역에서는 물론 모든 지역에서 사용할 수 있습니다 .



廢電池請回收

低功率電波輻射性電機管理辦法

第十二條

經型式認證合格之低功率射頻電機，非經許可，公司、商號或使用者均不得擅自變更頻率、加大功率或變更原設計之特性及功能。

第十四條

低功率射頻電機之使用不得影響飛航安全及干擾合法通信；

經發現有干擾現象時，應立即停用，並改善至無干擾時方得繼續使用。

前項合法通信，指依電信規定作業之無線電通信。

低功率射頻電機須忍受合法通信或工業、科學及醫療用電波輻射性電機設備之干擾。

ELECOM CO., LTD.

1-1 Fushimi-machi 4-Chome Chuuko, Osaka Japan 541-8765

宜麗客(上海)貿易有限公司
上海市徐匯區肇嘉浜路1065甲号飛雕國際大廈704号
電話：86-21-33680011
FAX：86-21-64271706
URL：http://www.elecom-china.com/
ELECOM (SHANGHAI) TRADING CO., LTD.
Rm 704, Feidiao International Bldg., 1065 ZhaoJiaBang Rd., Shanghai,
China 200030
TEL: 86-21-33680011
FAX: 86-21-64271706
URL: http://www.elecom-china.com/
Elecom Korea Co., Ltd.
5F Suam Bldg. 1358-17, Seocho2-dong, Seocho-gu, Seoul 137-862,
Korea
TEL: 1588-9514
FAX: (02)3472-5533
URL: www.elecom.co.kr

Wireless Laser Mouse
M-SN2DL Series User's manual
2nd edition, November 20, 2009
ELECOM Co., Ltd.

- This manual is copyright of ELECOM Co., Ltd.
- Unauthorised copying and/or reproducing of all or part of this manual is prohibited.
- The specifications and appearance of this product may be changed without prior notice for product improvement purposes.
- ELECOM Co., Ltd. shall bear no responsibility for any and all affects resulting from the use of this product regardless of the above reasons.
- Export or service transaction permission under the Foreign Exchange and Foreign Trade Control Law is required in order to export this product or parts of this product that constitute strategic materials or services.
- Windows and the Windows logo are trademarks of the Microsoft group of companies.
- Mac, Mac OS, and Macintosh are registered trademarks or trademarks of Apple Inc., in the United States
- Company names, product names, and other names in this manual are generally trademarks or registered trademarks.