

Model: M-XGL10BB/M-XGM10BB/M-XGx10BB

ENGLISH

Manual

Wireless Mouse

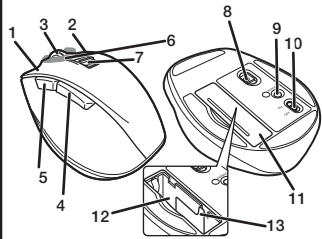
MouseAssistant

elecomus.com/web/mouse-assistant/

Download "ELECOM Mouse Assistant" from the ELECOM website to use its button assignment and high-speed scrolling functions.

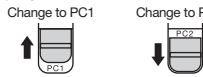


Name and function of each part



6 Pairing light/Power indicator light
The light underneath the wheel flashes in red when the mouse is in a pairing standby state. When the power is turned ON, the light underneath the wheel becomes illuminated in red for a fixed period of time. It flashes red when the battery level gets low.

7 Device selection switch
This product can be used with two Bluetooth devices by switching between them. Slide the device selection switch for changing device from "PC1" to "PC2".



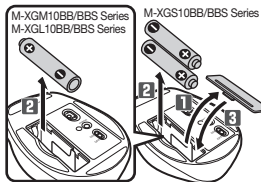
When the device is connected, the pairing lamp is lit for about three seconds.

When only either "PC1" or "PC2" is paired, and if you turn the device selection switch to the device that is not paired, the current connection is disconnected. In this case, reconnect by turning the device selection switch back to the device that was connected.

8 Optical sensor
9 Pairing button
10 Power switch
11 Battery cover
12 Battery storage compartment
13 Battery removal sheet

1 Left button
2 Right button
3 Wheel
4 "Back" button
You can perform the "Back" operation in a web browser.
5 "Forward" button
You can perform the "Forward" operation in a web browser.

1 Inserting the battery



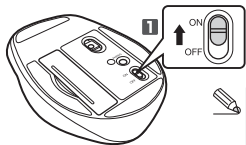
1 Remove the battery cover.

2 Insert the battery as instructed on the battery removal sheet.

Ensure that the battery is inserted with its positive (+) and negative (-) ends oriented correctly.

3 Attach the battery cover.

2 Turning the power on



1 Slide the power switch to the ON position.

The power indicator light will become illuminated in red for a fixed period of time.
* Flashes red when the battery level gets low.

Power-saving mode
When the mouse is left untouched for a fixed period of time while the power is ON, it automatically shifts to power-saving mode. The mouse is released from the power-saving mode when it is touched.
* Mouse operation may be unstable for a few seconds after returning from the power-saving mode.

3 Pairing with a PC

For Windows® 10

1 Click on the "Start" button on the lower left of the screen, and click on the "Settings" icon.

The "Windows Settings" window will appear.

2 Click on "Devices".

The "Devices" page will appear.

3 Click on "Bluetooth & other devices".

If "Bluetooth" is off, turn it on.

4 Click on "Add Bluetooth or other devices".

5 Select the connected device using the device selection switch.

* For the method used in selecting the device to connect, see "Device selection switch".
* The currently paired Bluetooth device is registered to the device selected here.

6 Click on "Bluetooth".

7 When the "Add a device" window appears, use a pointed item to press on the pairing button at the bottom of the device for 2 to 3 seconds, and then release.

The machine enters into the Pairing mode and the pairing lamp is lit in red.

8 Click on "ELECOM BlueLED Mouse".

Pairing of this product starts.

9 When the status changes to "Connected", click on "Complete".

10 Pairing is complete when this product is added to "Mouse, keyboard & pen" and the status is "Connected".
You can now use the mouse.

For macOS Catalina(10.15)

1 From the Apple menu, click on "System Preferences...".

The "System Preferences" window will appear.

2 Click on "Bluetooth".

The "Bluetooth" system setting page will appear.

3 Select the connected device using the device selection switch.

* For the method used in selecting the device to connect, see "Device selection switch".
* The currently paired Bluetooth device is registered to the device selected here.

4 Press the pairing button for 2 or 3 seconds using a pointed object and then release.

The machine enters into the Pairing mode and the pairing lamp is lit in red.

5 Click "ELECOM BlueLED Mouse" and click "Pairing". Registration of this product starts.

6 Pairing is complete when the pairing light stops flashing, "Connected" pops up on the screen, and the status of the "ELECOM BlueLED Mouse" is "Connected".
You can now use the mouse.

Specifications

Compatible standard	Bluetooth® 3.0 Class2
Profile	HID (Human Interface Device)
Resolution	2000 dpi
Radio frequency	2.4 GHz band
Radio wave method	FHSS
Operation distance	Non-magnetic surface (e.g. wooden desk) approx. 10 m Magnetic surface (e.g. steel desk) approx. 3 m * These values were obtained in ELECOM's test environment and are not guaranteed.
Mouse dimensions (W x D x H)	M-XGM10BB (M-XGM10BBS) series : approx. 2.9" x 4.3" x 1.6" M-XGL10BB (M-XGL10BBS) series : approx. 3.2" x 4.7" x 1.7"
Operating temperature/humidity	41°F to 104°F/90%RH or less (without condensation)
Storage temperature/humidity	14°F to 140°F/90%RH or less (without condensation)
Supported battery	AA alkaline battery, AA manganese battery, AA nickel-metal hydride rechargeable battery
Operating time	Estimated operating time when using an alkaline battery Continuous operating time: approx. 222 hours Continuous standby time: approx. 462 days Estimated usage time: approx. 402 days The above is assuming the computer is used for eight hours a day with 5% of that time spent operating the mouse.
Supported OS	Windows® 10, Windows® 8.1, Windows® RT8.1, Windows® 7, macOS Catalina 10.15 (Updating the OS or installing a service pack may be necessary.) * Compatibility information was retrieved during operation confirmation in our verification environment. There is no guarantee of complete compatibility with all devices, OS versions, and applications.

Safety Precautions

- ⊘ Prohibited action
- Ⓜ Mandatory action
- ⚠ Situation that needs attention

⚠ WARNING

1 If a foreign object (water, metal chip, etc.) enters the product, immediately stop using the product, remove the receiver unit from the PC, and remove the battery from the product. If you continue to use the product under these conditions, it may cause a fire or electric shock.

1 If the product is behaving abnormally, such as by generating heat, smoke, or a strange smell, immediately stop using the product, shut down the PC, and then sufficiently check whether the product is generating heat while being careful to avoid being burned. Then, remove the receiver unit from the PC and remove the battery from the product. After that, contact the retailer from whom you purchased the product. Continuing to use the product under these conditions may cause a fire or electric shock.

⊘ Do not drop the product or otherwise subject it to impacts. If this product is damaged, immediately stop using it, remove the receiver unit from the PC, and remove the battery from the product. After that, contact the retailer from whom you purchased the product. Continuing to use the product while it is damaged may cause a fire or electric shock.

⊘ Do not attempt to disassemble, modify or repair this product by yourself, as this may cause a fire, electric shock or product damage.

⊘ Do not put this product in fire, as the product may burst, resulting in a serious fire or injury.

⊘ Do not insert or remove the receiver unit with wet hands. Also, do not make alterations to or forcefully bend the receiver unit. Doing so may cause a fire or electric shock.

Ⓜ The receiver unit presents a serious hazard for children, so be sure to store it in a place out of the reach of children.

⚠ CAUTION

⊘ Do not place this product in any of the following environments:
• In a car exposed to sunlight, a place exposed to direct sunlight, or a place that becomes hot (around a heater, etc.)
• In a moist place or a place where condensation may occur
• In an uneven place or a place exposed to vibration
• In a place where a magnetic field is generated (near a magnet, etc.)
• In a dusty place

1 This product does not have a waterproof structure. Use and store this product in a place where the product body will not be splashed with water or other liquid. Rain, water mist, juice, coffee, steam or sweat may also cause product damage.

⊘ Avoid looking directly at the light of the optical sensor as doing so may cause eye damage.

⊘ Only use this product with PCs and video game systems.

⊘ Do not use this product with any device that may significantly be affected in the case of this product malfunctioning.

⊘ If this product is used on a transparent surface such as glass or a highly reflective surface such as a mirror, the optical sensor will not function correctly and the product's cursor movement will become unstable.

- ⊘ If this mouse isn't going to be used for one month or longer, remove the receiver unit from the PC.
- ⊘ When you no longer need to use this product and the battery, be sure to dispose of them in accordance with the local ordinances and laws of your area.

Ⓜ Batteries

1 For this product, use AA alkaline battery, AA manganese battery, or AA type nickel-metal hydride rechargeable battery.

⊘ When not using this product for long periods of time, remove the battery. This may cause fluid leak or malfunction.

Ⓜ Cleaning the Product

If the product body becomes dirty, wipe it with a soft, dry cloth.

⊘ Use of a volatile liquid (paint thinner, benzene, alcohol, etc.) may affect the material quality and color of the product.

Cautions for Wireless Equipment

This product is wireless equipment using the entire range of the 2.4 GHz band and it is possible to avoid the band of mobile object identification systems. FHSS is used for the radio wave method. The interference distance is 10 m. The 2.4 GHz band is also used by medical equipment, Bluetooth, and wireless LAN equipment conforming to the IEEE802.11b/11g/11n standard.

* Before using this product, check that there are no other "radio stations" operating nearby.

* If electromagnetic interference occurs between this product and other "radio stations", move this product to another location or stop using this product.

* Other "radio stations" refer to industrial, scientific and medical devices using the 2.4 GHz band, as this product does, other radio stations of this type, licensed radio station premises for a mobile object identification system that is used in factory production lines, certain non-licensed low power radio stations and amateur radio stations.

⚠ WARNING

⊘ Do not use this product with a device that may have a serious function or influence. There are rare cases where an external radio wave at the same frequency or the radio wave emitted from a mobile phone causes this product to malfunction, slow down, or fail to operate.

⊘ Do not use this product in a hospital or other locations where the use of radio waves is prohibited. The radio waves of this product may affect electronic and medical devices (e.g. pacemakers).

⊘ The use of a wireless mouse in an aircraft is prohibited by aviation law as its use may interfere with flight safety. Turn off the power of the mouse body before boarding an aircraft and do not use it in the aircraft.

* ELECOM is not liable for any accident or any indirect or consequential damage incurred due to the failure of this product.

Limitation of Liability

• In no event will ELECOM Co., Ltd be liable for any lost profits or special, consequential, indirect, punitive damages arising out of the use of this product.
• ELECOM Co., Ltd will have no liability for any loss of data, damages, or any other problems that may occur to any devices connected to this product.



FCC ID: YWO-M-XG10BB

This device complies with Part 15 of the FCC Rules. Operation is subject to the following two conditions: (1) this device may not cause harmful interference, and (2) this device must accept any interference received, including interference that may cause undesired operation.

NOTE: This equipment has been tested and found to comply with the limits for a Class B Digital Device, pursuant to part 15 of the FCC Rules. These limits are designed to provide reasonable protection against harmful interference in a residential installation. This equipment generates, uses and can radiate radio frequency energy and, if not installed and used in accordance with the instruction, may cause harmful interference to radio communication. However, there is no guarantee that interference will not occur in a particular installation. If this equipment does cause harmful interference to radio or television reception, which can be determined by tuning the equipment off and on, the user is encouraged to try to correct the interference by one or more of the following measures:

- Reorient or relocate the receiving antenna
- Increase the separation between the equipment and receiver
- Connect the equipment into an outlet on a circuit different from that to which the receiver is connected
- Consult the dealer or an experienced radio/TV technician for help

NOTE: The manufacturer is not responsible for any radio or TV interference caused by unauthorized modification to this equipment. Such modifications could void the user's authority to operate the equipment. In order to make improvements to this product, the design and specifications are subject to change without prior notice.

CONTACT US
elecom.net



FOLLOW US
facebook.com/elecomus



Unauthorized copying and/or reproducing of all or part of this manual is prohibited.
* The specifications and appearance of this product may be changed without prior notice for product improvement purposes.
* When exporting this product, check the export regulations for the country of origin.
* The Bluetooth® word mark and logos are registered trademarks owned by Bluetooth SIG, Inc. and any use of such marks by ELECOM CO., LTD. is under license.
* Windows is a trademark of the Microsoft Corporation.
* macOS Catalina, and Macintosh are trademarks of Apple Inc., registered in the U.S. and other countries.
* Company names, product names, and other names in this manual are either trademarks or registered trademarks.

A customer who purchases outside Japan should contact the local retailer in the country of purchase for enquiries. In "ELECOM CO., LTD. (Japan)", no customer support is available for enquiries about purchases or usage in/from any countries other than Japan. Also, no foreign language other than Japanese is available. Replacements will be made under stipulation of the Elecom warranty, but are not available from outside of Japan.

Wireless Mouse
Manual, Safety precautions, and Compliance with regulations
1st edition, December 2, 2020

ELECOM

©2020 ELECOM Co., Ltd. All Rights Reserved.