



# ELECOM MouseAssistant

Thank you very much for purchasing this ELECOM mouse.

This dedicated mouse function allocation software is intended to allocate the desired functions to the mouse buttons.

This help file explains the procedures for installing/uninstalling the software, setting the allocation of mouse button functions, changing the horizontal scrolling speed, flying scroll function settings and mouse cursor moving speed.

Use this help file if you have any questions or problems during use of the software.

## Contents

- [1. Operating Environment](#)
  - [- Supported OS's](#)
- [2. Installation/Un-installation Procedure](#)
  - [- Installation](#)
  - [- Uninstallation](#)
- [3. Usage](#)
  - [- Checking the horizontal scrolling](#)
  - [- Allocating buttons](#)
  - [- Checking the flying scroll function](#)
  - [- Setting profiles](#)
  - [- Setting gesture functions](#)
  - [- Mouse selection](#)
  - [- "Writing" and "Reading" the settings files](#)
- [4. Other Precautions](#)

## 1. Operating Environment

### - Supported OS's

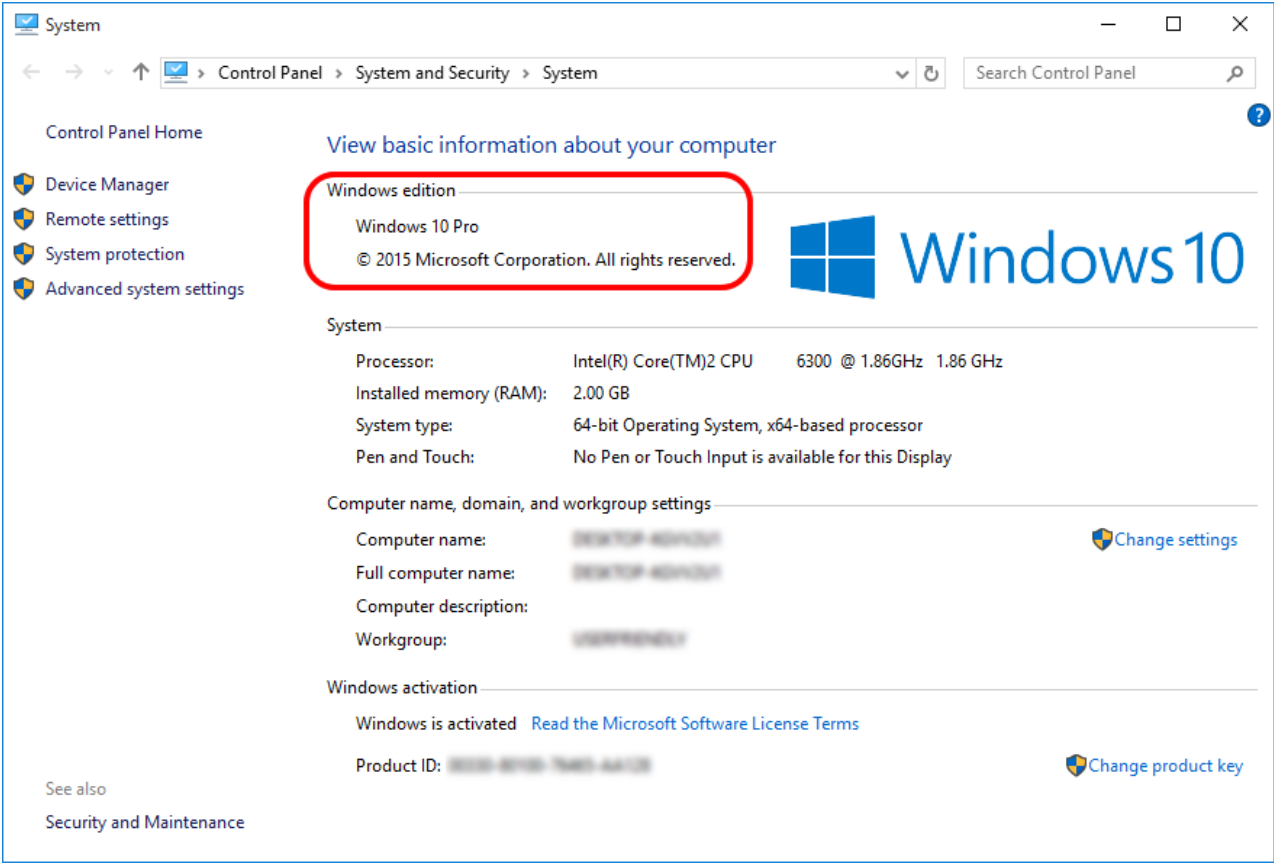
The OS supported by ELECOM Mouse Assistant depends on the OS supported by the mouse to use.  
For the OS supported by the mouse, refer to the ELECOM website or the product package.

\*Windows® RT is not supported.

#### \* Procedure for checking the version

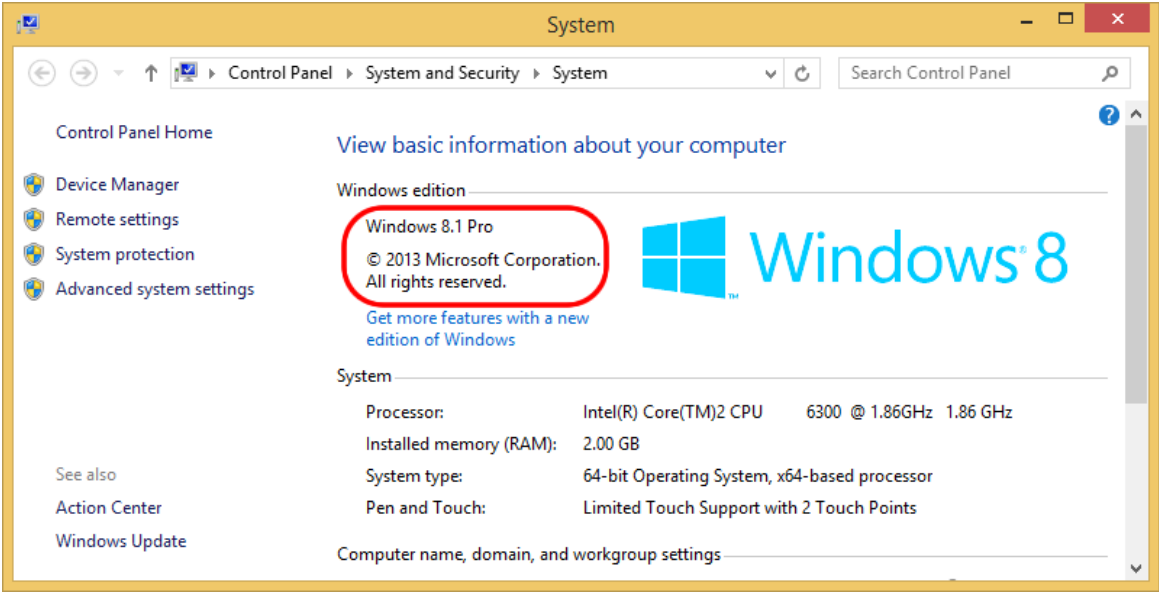
[Windows® 10 users]

Right-click the [Start] button on the lower-left corner on the screen, click [System], and check the version.



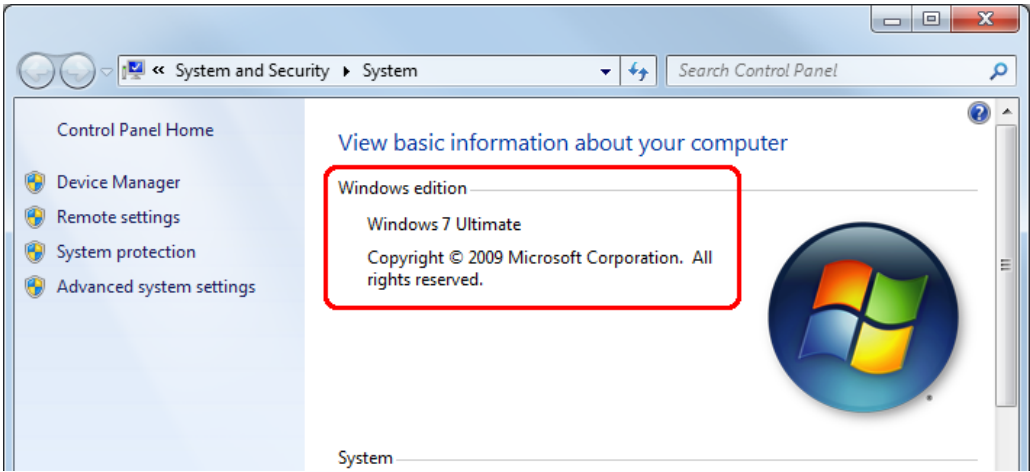
[Windows® 8.1 users]

Right-click the [Start] button on the lower-left corner on the screen, click [System], and check the version.



[Windows® 7 , Windows Vista® users]

Click [Start] – [Control Panel] – [System and Maintenance] – [System] and check the version.



(Windows® 7 version screen)

[Return to Contents](#)

## 2. Installation/Uninstallation Procedure

### - Installation

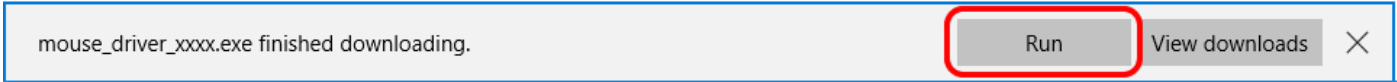
Access ELECOM's home page using the following URL and download the latest applications.  
[http://www.elecom.co.jp/global/download/utility/mouse\\_assistant/](http://www.elecom.co.jp/global/download/utility/mouse_assistant/)

- \* Precaution
- Log onto the computer with a user account that has administrative privileges, and then install the software.
  - After installation is complete, Windows® must be restarted.  
It is recommended that all open applications are closed before installing the software.

1 Double-click the downloaded mouse\_driver\_xxxx.exe file (xxxx differs depending on the version).

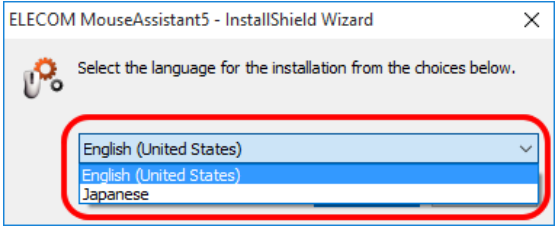


According to the system environment, installer can be started up soon after downloading.

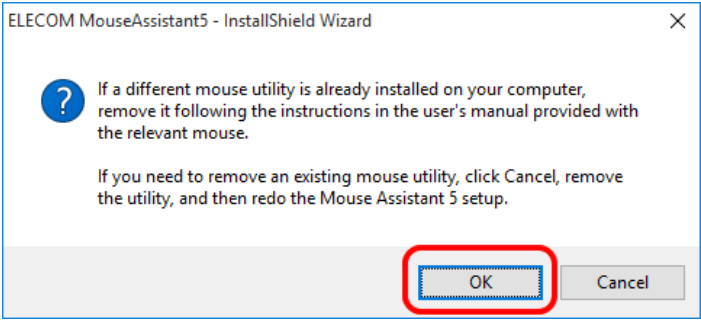


2 After the installer has been activated, install the software by following the instructions on the screen.

\* When the [User Account Control] screen is displayed, click the [Yes] button (Windows® 10, Windows® 8.1, Windows® 8 or Windows® 7) or the [Allow] button (Windows Vista®).

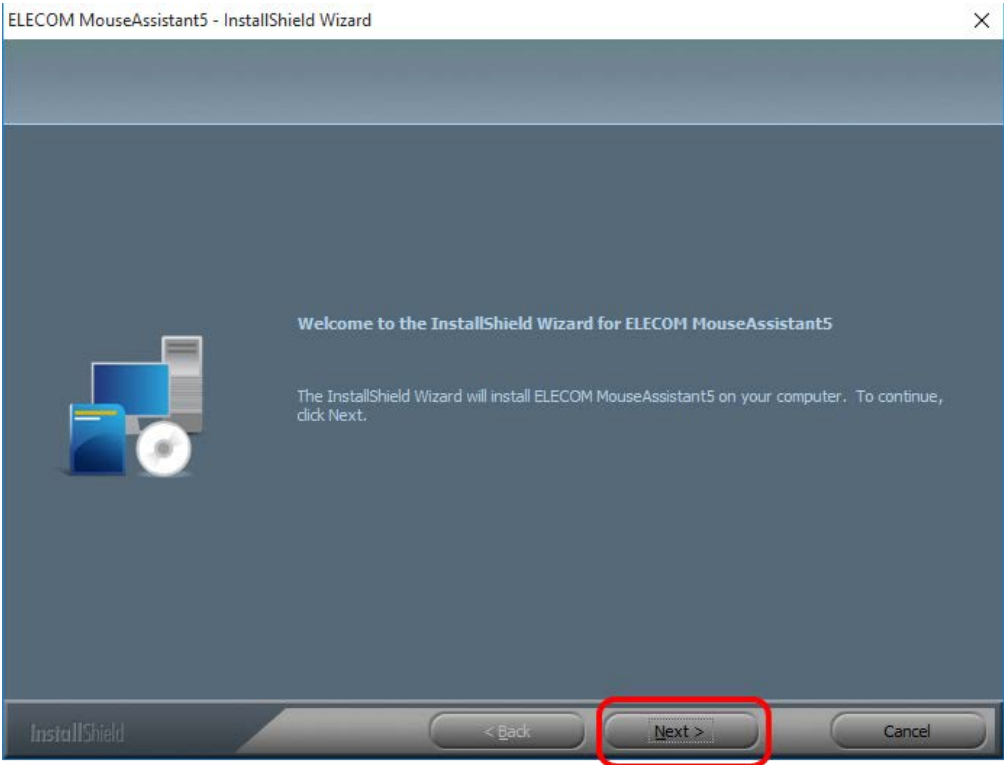


Select [English], and click [OK].



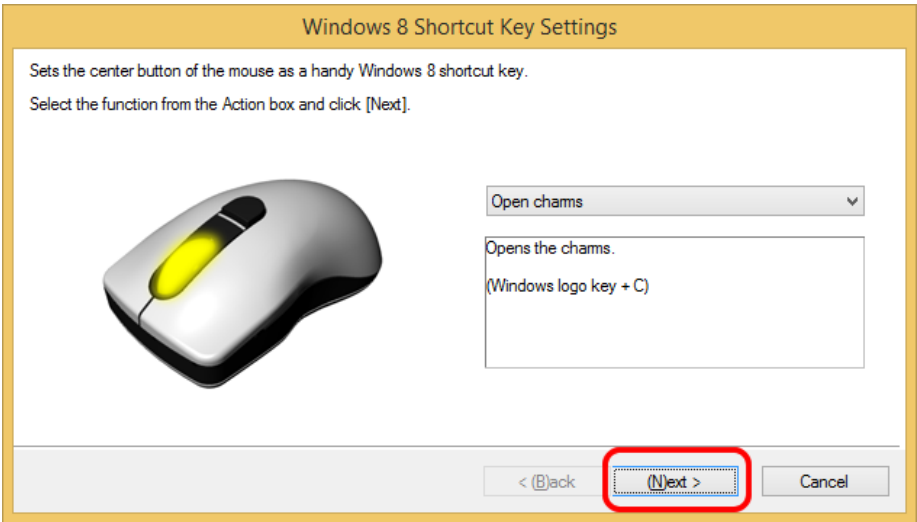
Click the [OK] button.

- \* If a different mouse utility is already installed on your computer, click [Cancel] and remove it.
- \* If a previous version of ELECOM Mouse Assistant is already installed on your computer, remove it following the directions on the screen.



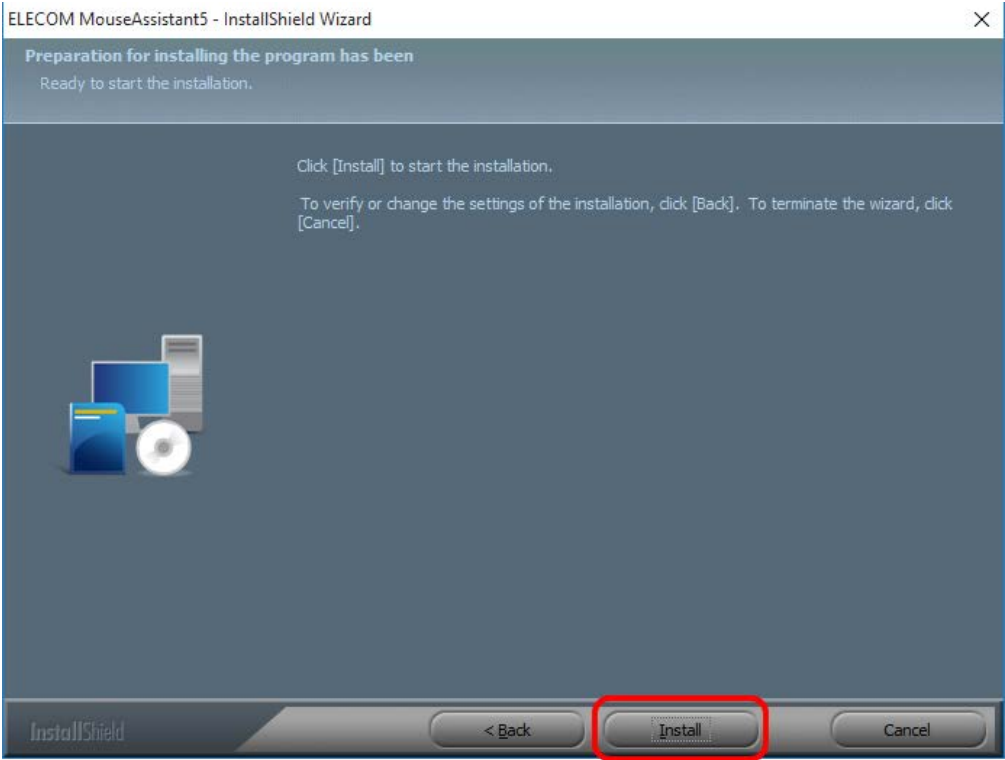
Click the [Next] button.

- \* Clicking the [Cancel] button during the installation process will cancel the installation.
- If using Windows® 8 or later, setting screen of the shortcut keys for the tilt wheel is displayed. In the combo box, select and click the [Next (N)] button.



Click the [Next (N)] button.

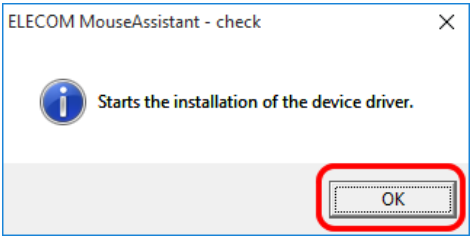
- \* Clicking the [Cancel] button during the installation process will cancel the installation.



Click the [Install] button.

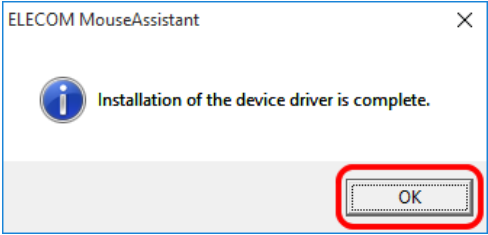
\* Clicking the [Cancel] button during the installation process will cancel the installation.

In subsequent processes, the installation cannot be canceled.

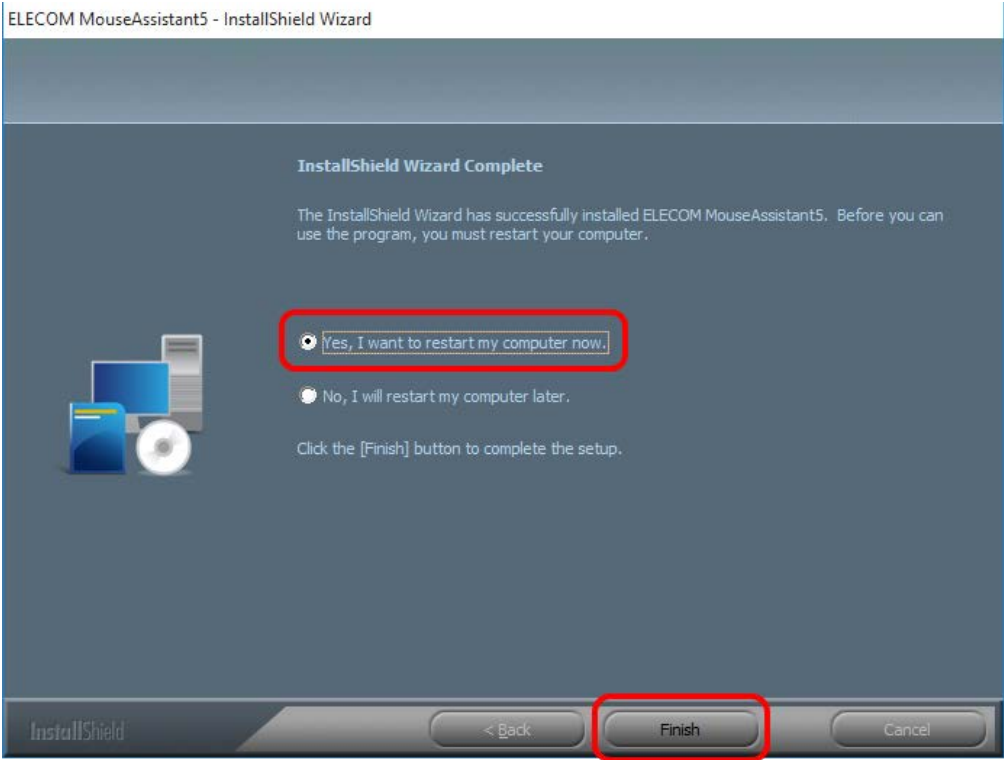


Click the [OK] button to begin installing the device driver.

\* Even if the window is closed by clicking the [X] button on the upper right of the window, the installation will continue.



Click the [OK] button.



After installation is complete, make sure that the box for [Yes, restart the computer now] is checked and click the [Finish] button.

\* Using the above procedure, the installation is complete.

[Return to Contents](#)

## - Uninstallation

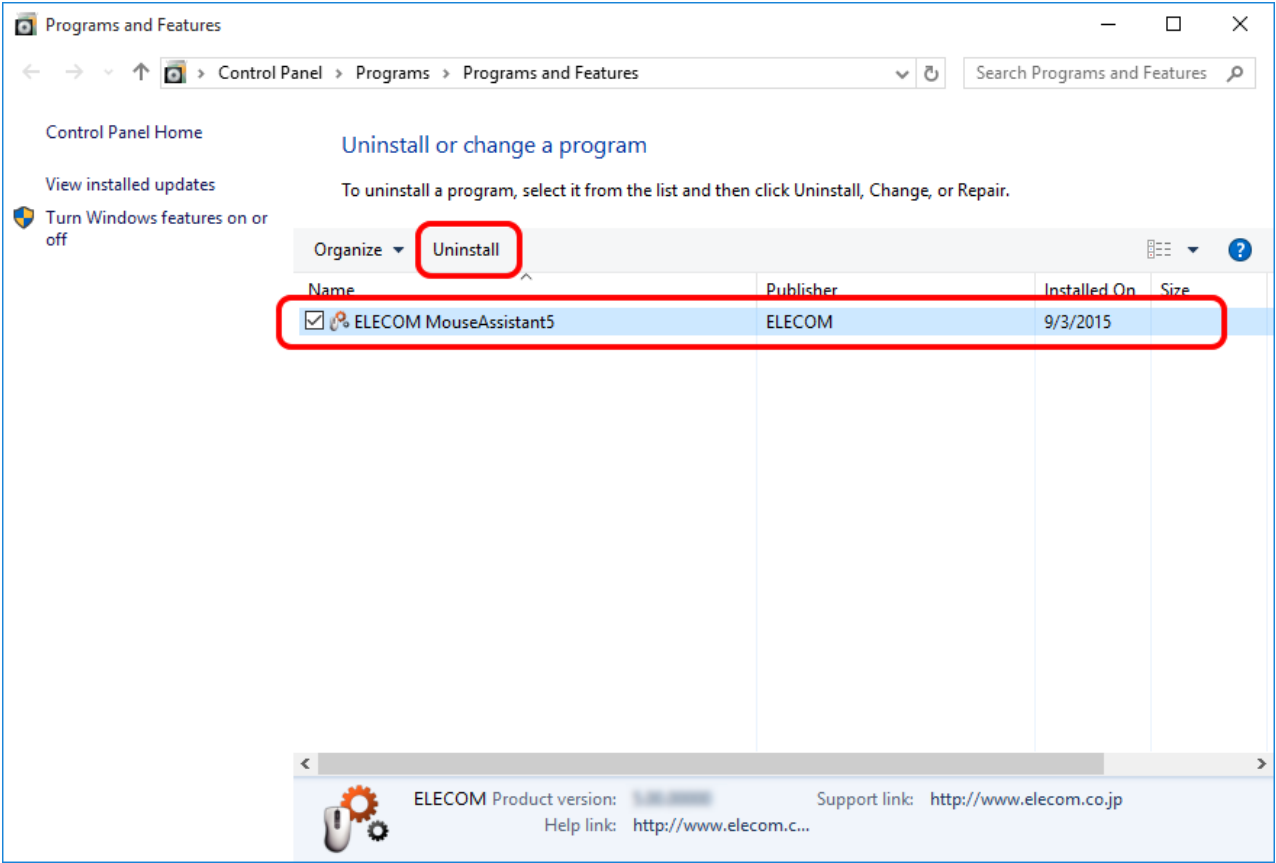
**\* Precaution**

- Log onto the computer with a user account that has administrative privileges, and then uninstall the software.
- After uninstallation is complete, Windows® must be restarted. It is recommended that all open applications are closed before uninstalling the software.

**1** Procedure for starting the uninstaller

**[Windows® 10 users]**

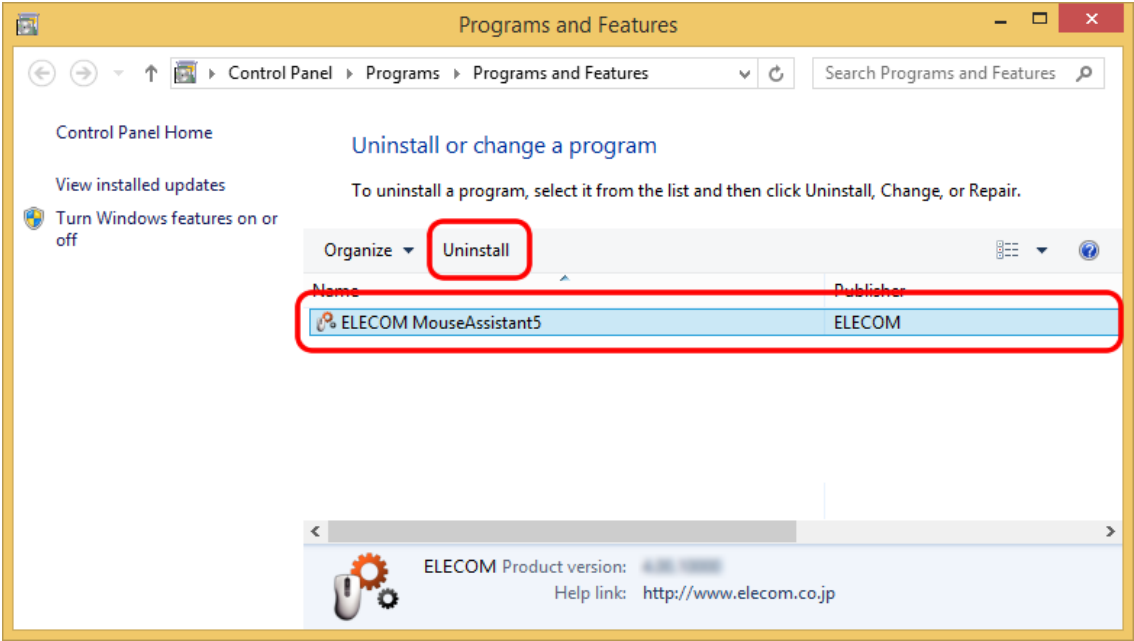
Right-click the [Start] button on the lower-left corner on the screen, and click [Programs and Features].



Click [ELECOM MouseAssistant5] on the screen above and then click the [Uninstall] button.

[Windows® 8.1 users]

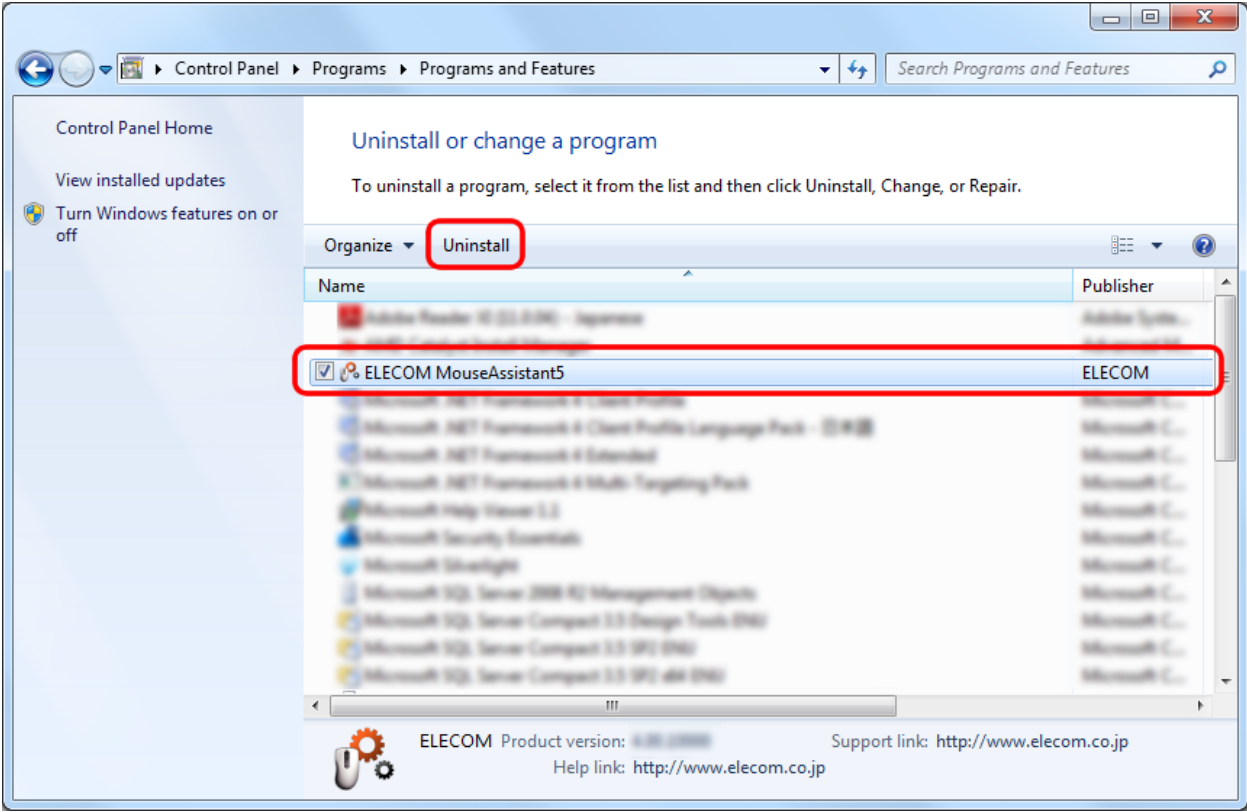
Right-click the [Start] button on the lower-left corner on the screen, and click [Programs and Features].



Click [ELECOM MouseAssistant5] on the screen above and then click the [Uninstall] button.

[Windows® 7 or Windows Vista® users]

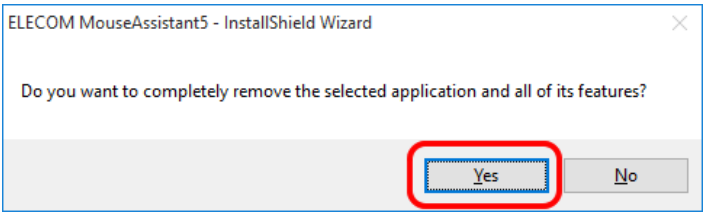
Click [Start] – [Control Panel] – [Programs] – [Programs and Features].



Click [ELECOM MouseAssistant5] on the screen above and then click the [Uninstall] button.

\* When the [User Account Control] screen is displayed in Windows Vista®, click the [Continue] button.

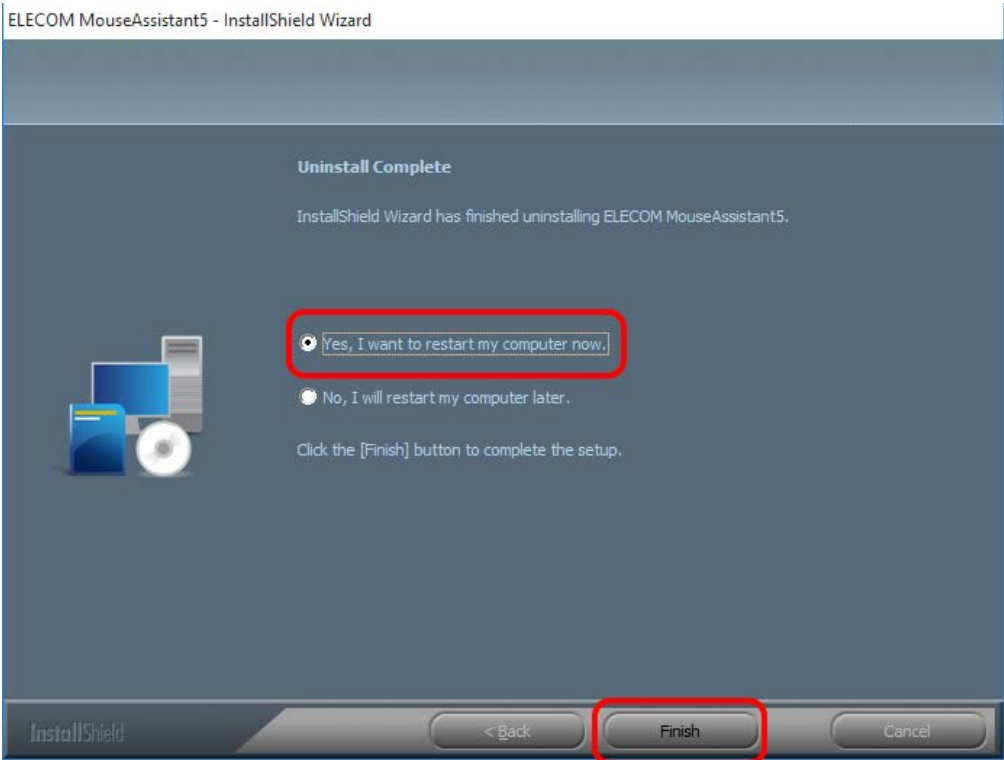
2 Once the uninstaller has been activated, uninstall the software by following the instructions on the screen.



Click the [Yes] button.

\* Clicking the [No] button will cancel the un-installation.

In subsequent processes, un-installation cannot be canceled.





Make sure that the box for "Yes, restart the computer now" is checked and click the [Finish] button.

\* Using the above procedure, un-installation is complete.

[Return to Contents](#)

### 3. Usage

#### - Checking the horizontal scrolling

The tilt wheel horizontal scrolling function is enabled once "ELECOM MouseAssistant5" has been installed successfully.

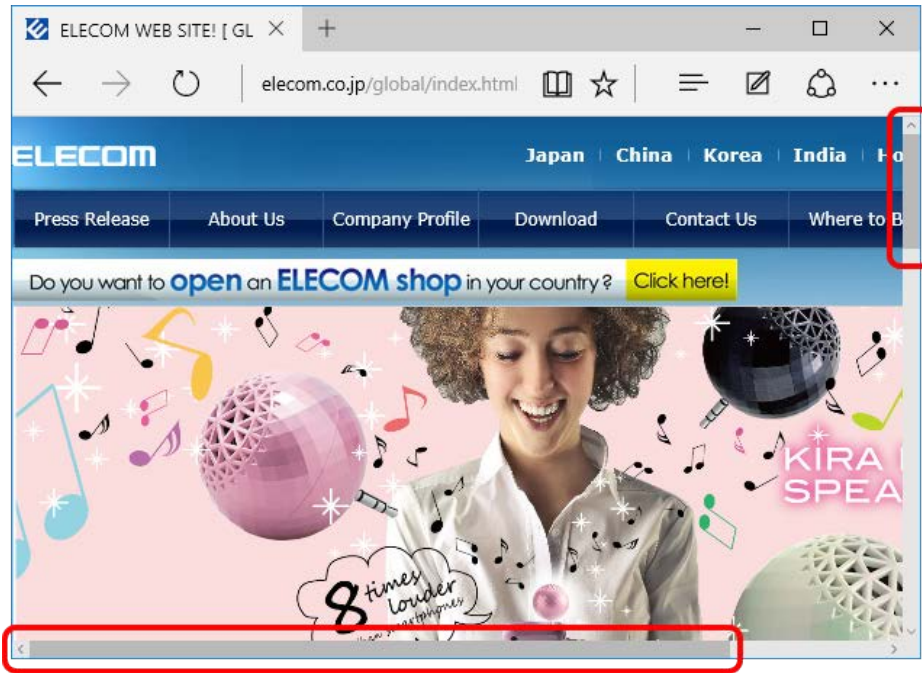
\* This function is only enabled in an [ELECOM mouse](#) that has the horizontal scrolling function.

- 1 If using Windows® 10, click [Start] - [All Applications] - [Windows Accessory] - [Internet Explorer®] in the Desktop mode.  
If using Windows® 8.1, click the "Internet Explorer®" icon on the desktop.  
If using Windows® 7, Windows Vista®, click [Start] - [All Programs] - [Internet Explorer].

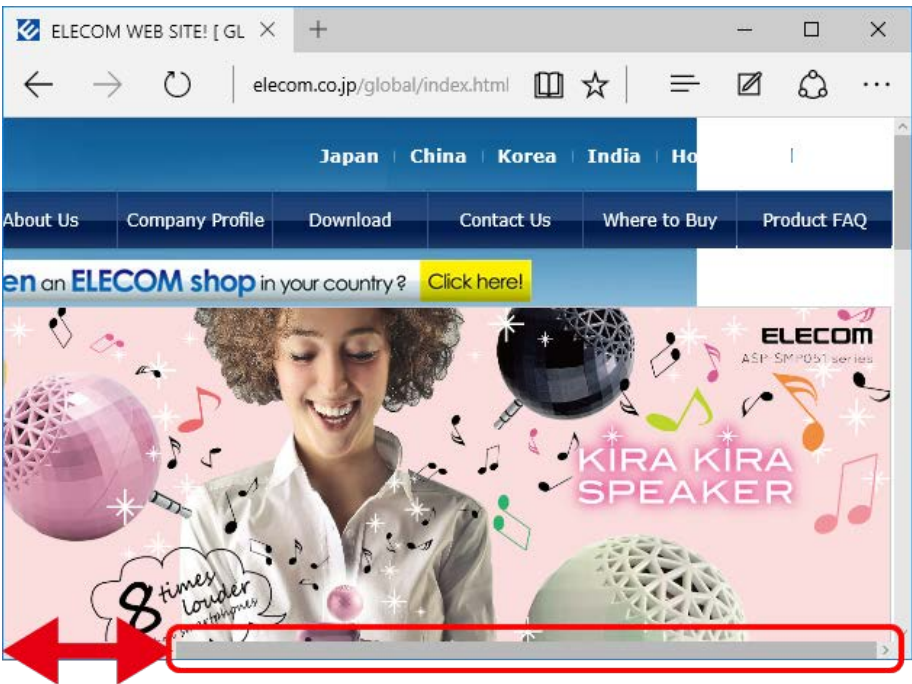
Internet Explorer® is activated.

- 2 Display the desired home page with Internet Explorer® and change the screen to make the vertical and horizontal scrollbars visible.

\* ELECOM's homepage is displayed here as an example.



- 3 Move the tilt wheel of the mouse from side to side.



If the screen scrolls from side to side as the tilt wheel is moved from side to side, then the tilt wheel is functioning normally.

Some applications do not support the horizontal scrolling function, so the tilt wheel may not work even if it is moved from side to side.  
For some products, the [speed of the horizontal scrolling](#) cannot be controlled.

\* For the applications using the horizontal scrolling function supported by OS as standard, the [speed](#) cannot be controlled.

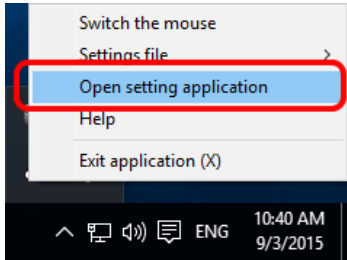
[Return to Contents](#)

- Allocating buttons

Once the "ELECOM MouseAssistant5" is installed, the functions allocated to the buttons of [your mouse](#) can be changed.

1 Right-click the icon of [ELECOM mouse] on the task tray or notification area.

From the pop-up menu displayed, click [Open setting application].  
(When this software is already running)



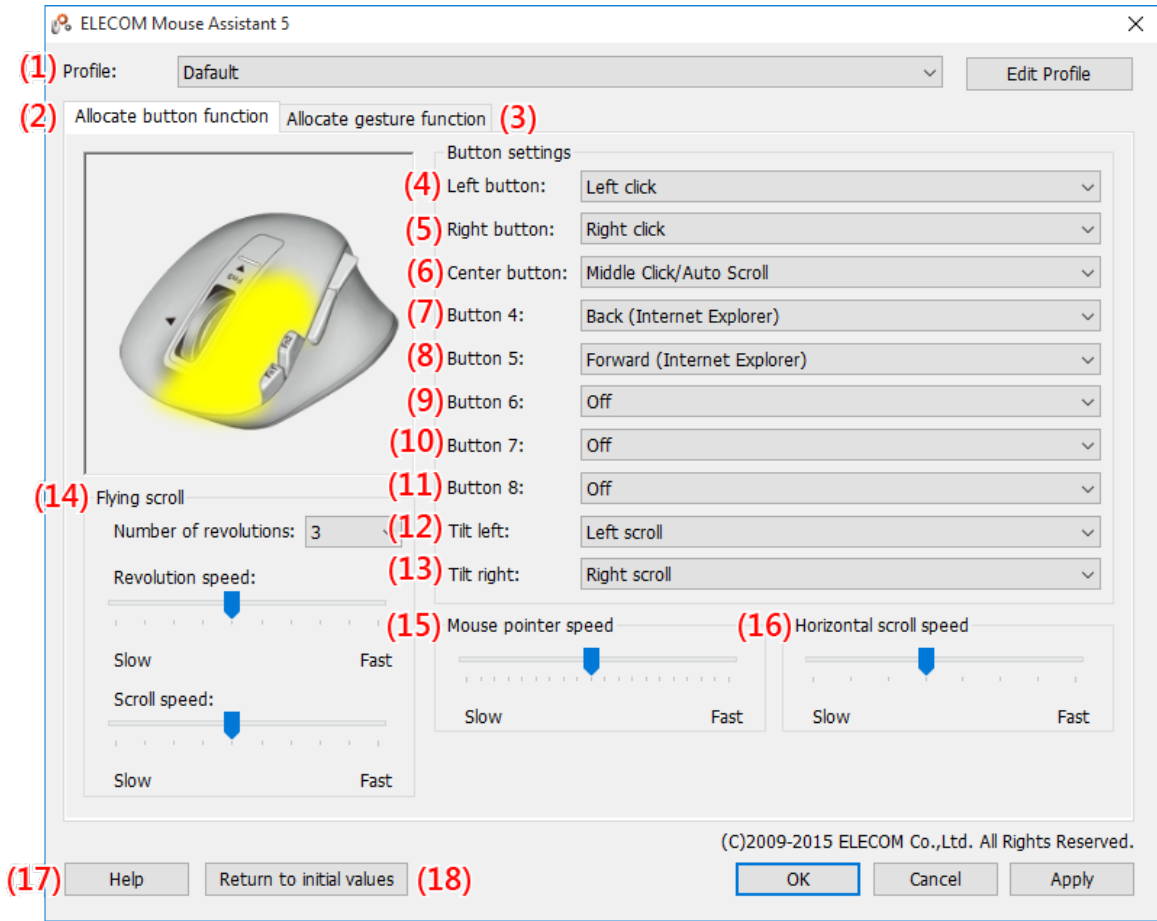
\* Other activation methods

- Double-click the icon on the task tray or notification area.  
(When this software is already running)
- Press the Application button, and click [ELECOM] – [MouseAssistant5]. (Windows®10, Tablet mode)
- Click the [Start] button, and click [All Applications] - [ELECOM] - [MouseAssistant5]. (Windows®10, Desktop mode)
- Click the tile [MouseAssistant5] tile on the application screen. (Windows® 8.1)
- Double-click the icon on the desktop. (Except for Windows®10, Tablet mode)
- Click [Start] – [Programs] – [ELECOM] – [MouseAssistant5] – [MouseAssistant5]. (Windows®7, Windows Vista®)

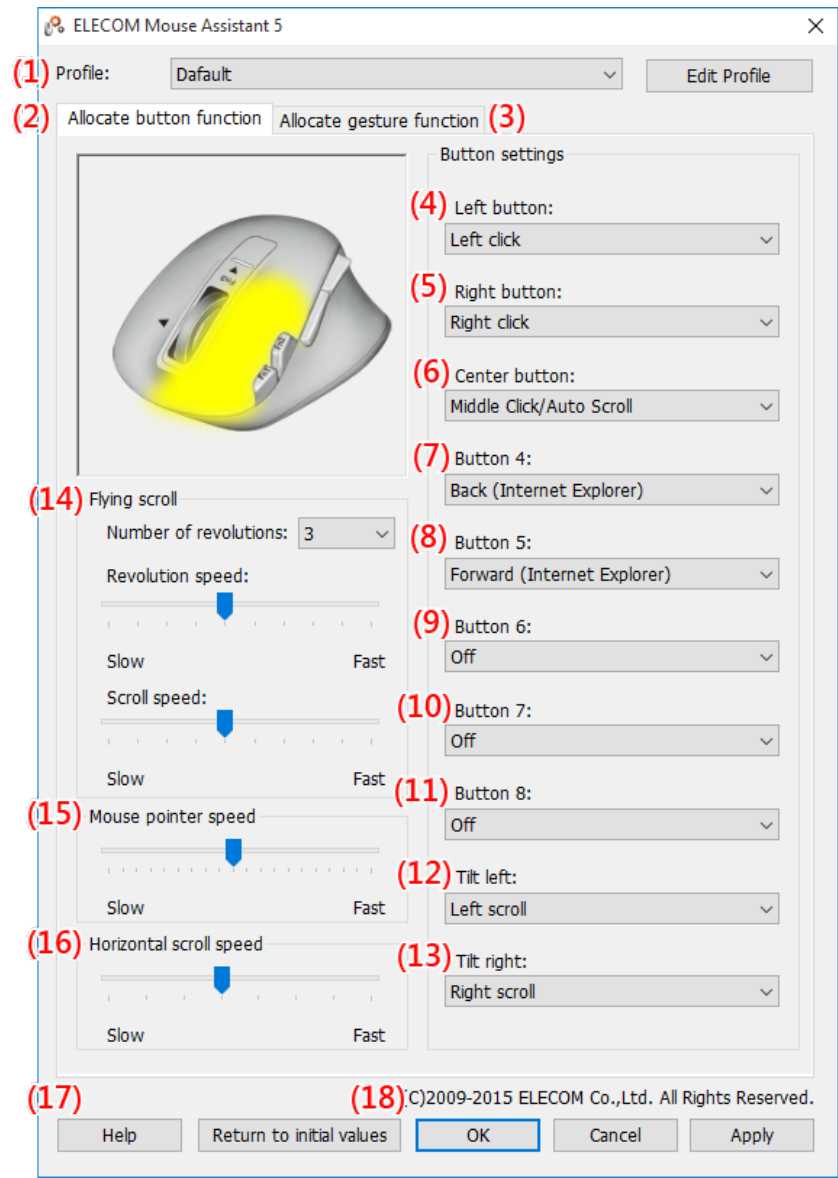
2 Changing settings on the settings screen

[ELECOM MouseAssistant5] is automatically displayed with an optimum layout corresponding to the both horizontal and vertical displays.

Horizontal orientation display



Vertical orientation display



(The screen shown is the screen when setting the left button of the M-XGx20DL Series.)

\* Settings cannot be enabled for buttons that the currently [selected mouse](#) does not have.

In (1) Profile, settings for the (2) [Allocate button function] tab and the (3) [Allocate gesture function] tab can be registered for individual programs. Because it detects the program currently in operation and automatically switches profiles, it is possible to have the mouse operate in response to a program without switching settings.

\*For a detailed explanation on profiles, see [Setting profiles](#).

In the (2) [Allocate button function] tab, function allocation for each button, horizontal scrolling speed and flying scroll function can be set.

In the (3) [Allocate gesture function] tab, functions executed with an input gesture that have been allocated to a button as a "Gesture function" can be set.

\* For a detailed explanation on gesture functions, see [Setting gesture functions](#).

In the selection boxes from (4) to (13), the following functions can be set.

The functions displayed on the screen depend on the OS to use. Those without special specification are displayed for all the OS.

Name displayed on the screen	Function explanation
Left click	Left-button click
Right click	Right-button click
Back (InternetExplorer)	Returns to the previous browser screen.
Forward (InternetExplorer)	Proceeds to the next browser screen.
Switch applications	Displays the application switching screen (Alt+Tab).*1
Close the window	Closes the active window.
Maximize the window	Enlarges the active window to full size.
Minimize the window	Reduces the active window to an icon.
Middle Click/Auto-scroll	Enables the middle click/auto scroll function.
My Computer	Opens My Computer.
Ctrl + C	Copies the selected string or file.

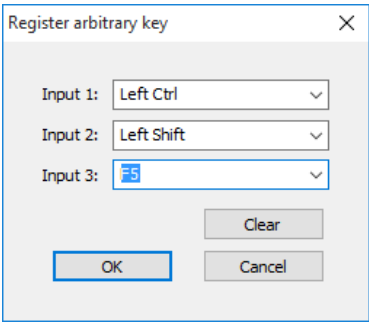
Ctrl + X	Cuts the selected string or file.
Ctrl + V	Pastes the copied or cut string or file.
Ctrl + Z	Undoes the previous operation.
Ctrl + Y	Repeats the previous operation.
Enter	The [Enter] key on the keyboard
Esc	The [Esc] key on the keyboard
Tab	The [Tab] key on the keyboard
Shift *2	The [Shift] key on the keyboard
Alt	The [Alt] key on the keyboard
Ctrl	The [Ctrl] key on the keyboard
Delete	The [Delete] key on the keyboard
Back Space	The [Back Space] key on the keyboard
Ctrl + S	Saves the data for the corresponding application.
Start button	Opens the [Start] menu for Windows®. (Windows® 8.1) Switches the screen alternately between the Start screen and the desktop.
Web browser (8.1, 7, Vista)	Opens the default Web browser.
Explorer	Starts Explorer (Windows + E).
Control Panel	Opens the control panel.
Printer settings	Opens the print screen for the corresponding application. (Ctrl + P)
Double click	Double-clicks the mouse.
Flip3D (7, Vista)	Executes the Flip3D function with the Windows® 7 / Windows Vista® aero setting.
Magnifying glass (8.1, 7, Vista)	Activates the magnifying glass.
Left Scroll	Scrolls left.
Right Scroll	Scrolls right.
Gesture function	Executes functions in response to the path of the mouse. For a detailed explanation, see <a href="#">Setting gesture functions</a> .
Arbitrary key	Simultaneously inputs a registered key. *3 *4
Volume Up	Increases the volume of the entire Windows®.
Volume Down	Decreases the volume of the entire Window®.
Mute	Stops sound output of the entire Windows®. Pressing this button again releases the mute function.
Zoom in	Enlarges the display.
Zoom out	Reduces the display.
Open charms (8.1)	Opens the charms and the time/date/notification overlay.
Open Share charm (10, 8.1)	Opens the Share charm.
Open Settings charm (10, 8.1)	Opens the Settings charm.
Open Devices charm (10, 8.1)	Opens the Devices charm.
Open Second Display charm (10, 8.1)	Opens the Second Display charm.
Open Search charm (8.1)	Opens the Search charm and searches for apps.
Open Ease of Access Center (10, 8.1)	Switches to the desktop and launches the Ease of Access Center.
Search settings with Search charm (8.1)	Opens the Search charm and searches for settings.
Displays customize bar (8.1)	Displays the Customize bar. (Windows® 8.1) Performs the same function as right click on the Start screen. *5
Launch Narrator (10, 8.1)	Switches to the desktop and launches Narrator.
Display app switcher (10, 8.1)	Displays the app switcher.
Cycle through apps (8.1)	Switches and displays the running apps sequentially.
Off	Disables all clicks of the set buttons.

\*1 Pressing the button which the function allocated, the selection application screen is displayed.  
This function differs depending on the OS.

- On the Windows® 7 or Windows Vista® the design screen selected the "Windows Classic" and "High contrast", pressing the button which the function allocated, it can change the application displayed the front.  
  
When the application is changed, press the another button (except the button which the function allocated).
- If it is not the case above  
  
Pressing the button which the function allocated, selectable application will change.  
Place the mouse cursor on the application, clicking will be determined.

\*2 Cannot be set to [Tilt left] or [Tilt right].

\*3 When [Arbitrary key] is selected, the Register arbitrary key screen will be displayed.  
Choose from the selection boxes marked [Input 1] through [Input 3] or press a key on the keyboard in coordination with the cursor.

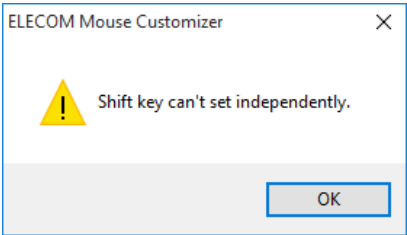


Once registration is complete press the [OK] button.

If "Tilt left" or "Tilt right" is allocated to [Arbitrary key], a key can be input while the tilt wheel is held down continuously.

- Depending on the OS or application, arbitrary key may not work with some combinations.
- Ctrl + Alt + Del cannot be set from the system security reason.

\*4 [Tilt left], [Tilt right] cannot register Shift to the arbitrary key individually. A combination of Shift and other key can be registered (except for the combination of Shift and Shift).



Click the [OK] button and redo the settings.

\*5 This function is only available on the Start screen.

In (14) flying scroll, high speed scrolling can be set.

\* For a detailed explanation on flying scroll, see [Checking the flying scroll function.](#)

- Number of revolutions:  
The number of revolutions necessary before switching to high speed scrolling can be set.  
When set to Invalid, high speed scrolling will not activate even when the tilt wheel is spun quickly.
- Revolution speed:  
The revolution speed of the tilt wheel can be set in eight steps.
- Scroll speed:  
High speed scrolling speed can be set in eight steps.

The mouse pointer speed (15) enables the setting of moving speed of the mouse cursor.

The horizontal scrolling speed in Item (16) can be set in eight steps.

\* For a detailed explanation of the horizontal scrolling, see [Checking the horizontal scrolling.](#)

\* The settings in Items (1) to (16) take effect once [OK] or [Apply] is clicked.  
Clicking [Cancel] exits [Mouse setting tool] without saving the settings.

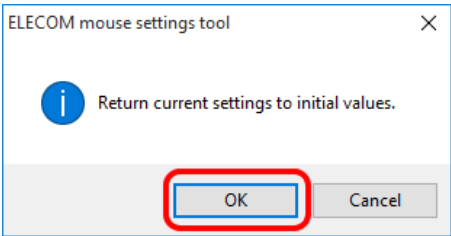
\* If [Left click] is not allocated to any of the buttons (4) to (13), the following message appears.

A dialog box titled "ELECOM mouse settings tool" with a close button (X) in the top right corner. It contains a yellow warning triangle icon and the text "Left Click is not set." Below the text is an "OK" button, which is highlighted with a red rectangle.

Click the [OK] button and redo the settings.

Clicking the [Help] button in Item (17) activates this help file.

Clicking the [Return to initial value] button in Item (18) displays the following window.



Clicking the [OK] button returns all the settings in Items (4) to (16) to their initial values.

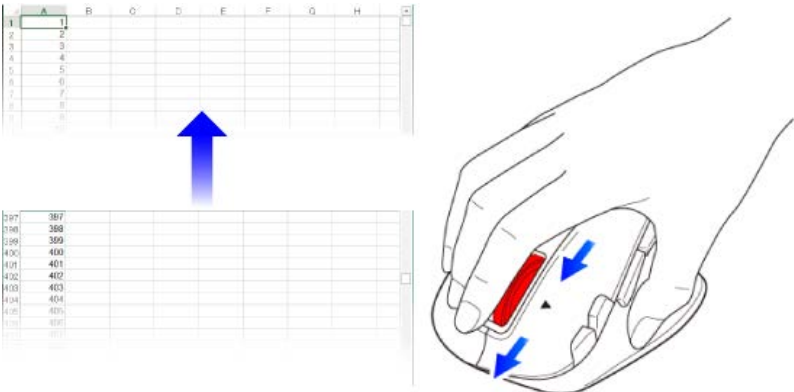
[Return to Contents](#)

- Checking the flying scroll function

The flying scroll function is a function that will perform high speed scrolling when the tilt wheel is quickly spun forward or backward.

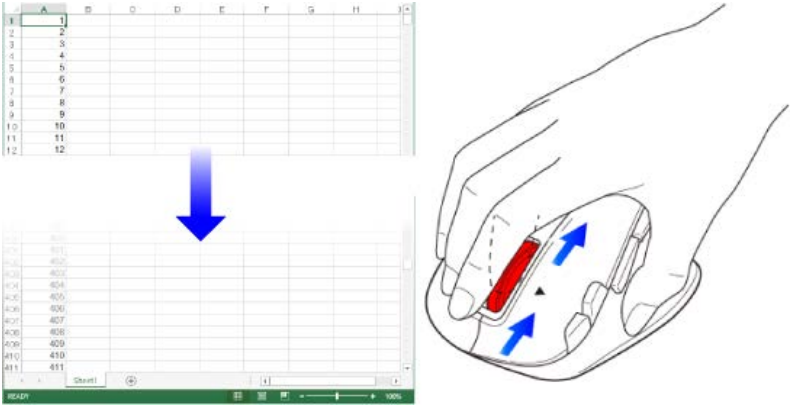
- \* When spun by plucking it with your finger, the tilt wheel can be spun quickly.
- \* The number of screens (rows) that it advances in one spin of the tilt wheel will increase, and scrolling will continue automatically.
- \* When slightly spun in the opposite direction, high speed scrolling will stop. High speed scrolling will also stop once a set amount of time has passed.

1 Spin the tilt wheel forward.



If the screen (rows) is scrolling upward at high speed, then the tilt wheel is functioning normally.

2 Spin the tilt wheel backward.



If the screen (rows) is scrolling downward at high speed, then the tilt wheel is functioning normally.

Some applications do not support the flying scroll function, so the tilt wheel may not work even if it is spun forward and backward.

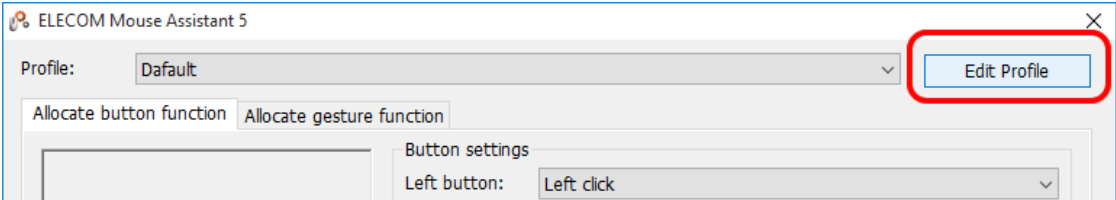
- \* Flying scroll settings such as [scroll speed](#), can be changed.

[Return to Contents](#)

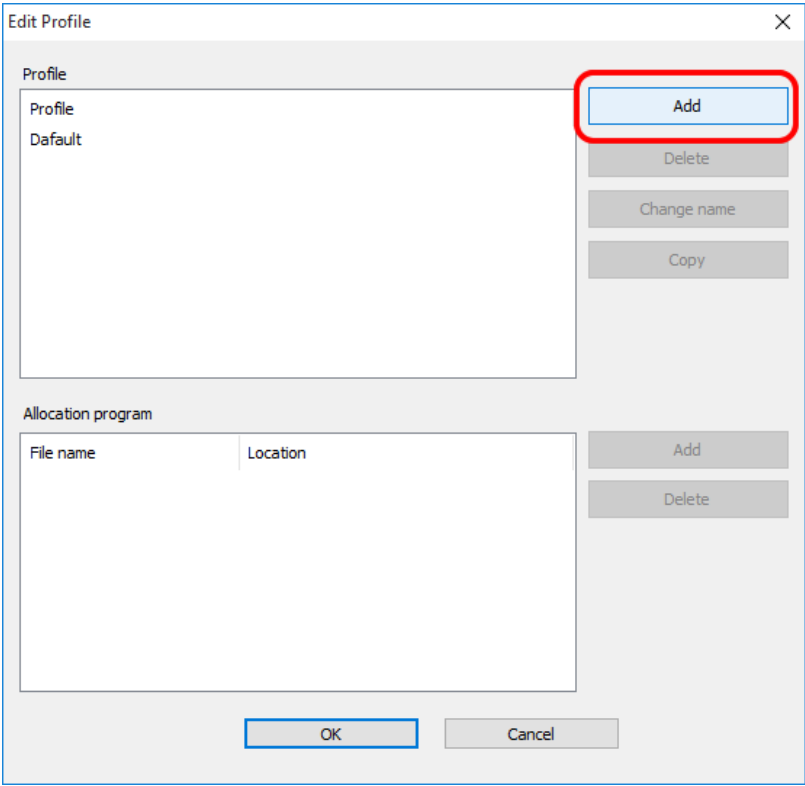
- Setting profiles

Mouse operations for individual programs are set in profiles.

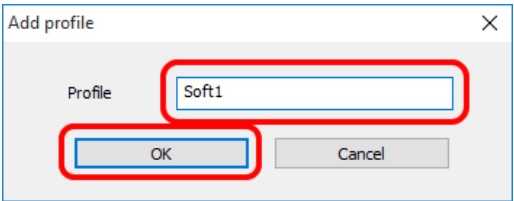
- 1 Complete settings for the (2) [Allocate button function] tab and the (3) [Allocate gesture function] tab.
- 2 Click the [Edit Profile] button.



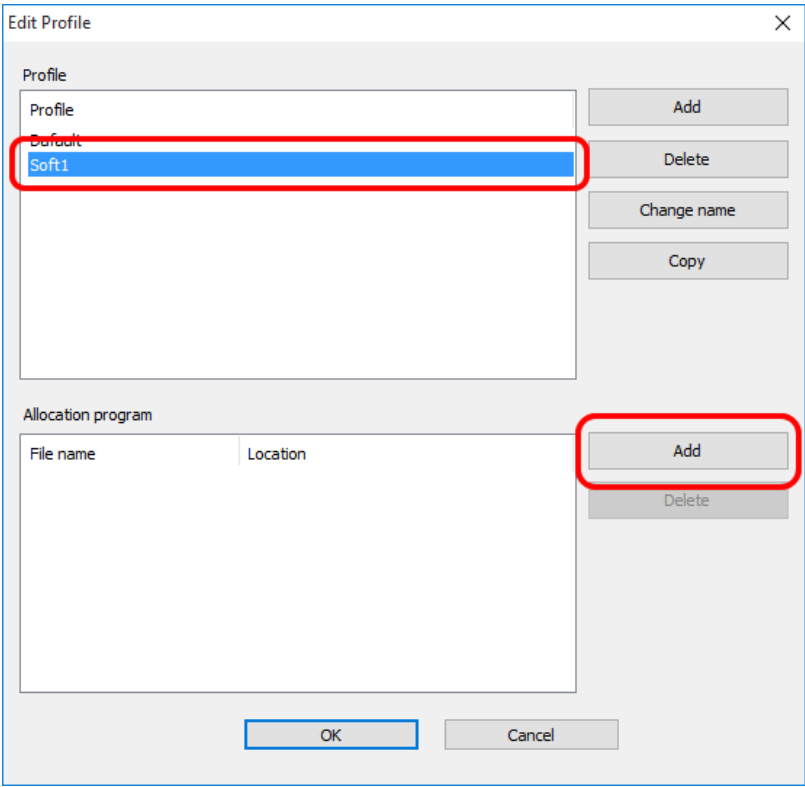
3 Click the [Add] button in Profile.



4 Enter a profile name and click the [OK] button.



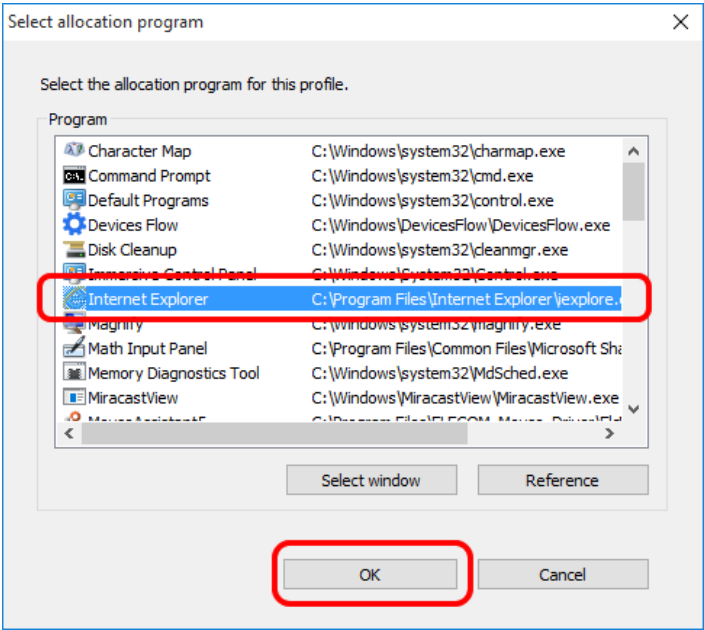
5 Select the created profile from the profile list and click the [Add] button in [Allocation program].



- To delete a profile, select a profile from the profile list and click the [Delete] button in [Profile].
- To change the name of a profile, select a profile from the profile list and click the [Change name] button in [Profile].
- To copy a profile, select a profile from the profile list and click the [Copy] button in [Profile].

6 Select the allocation program and click the [OK] button.

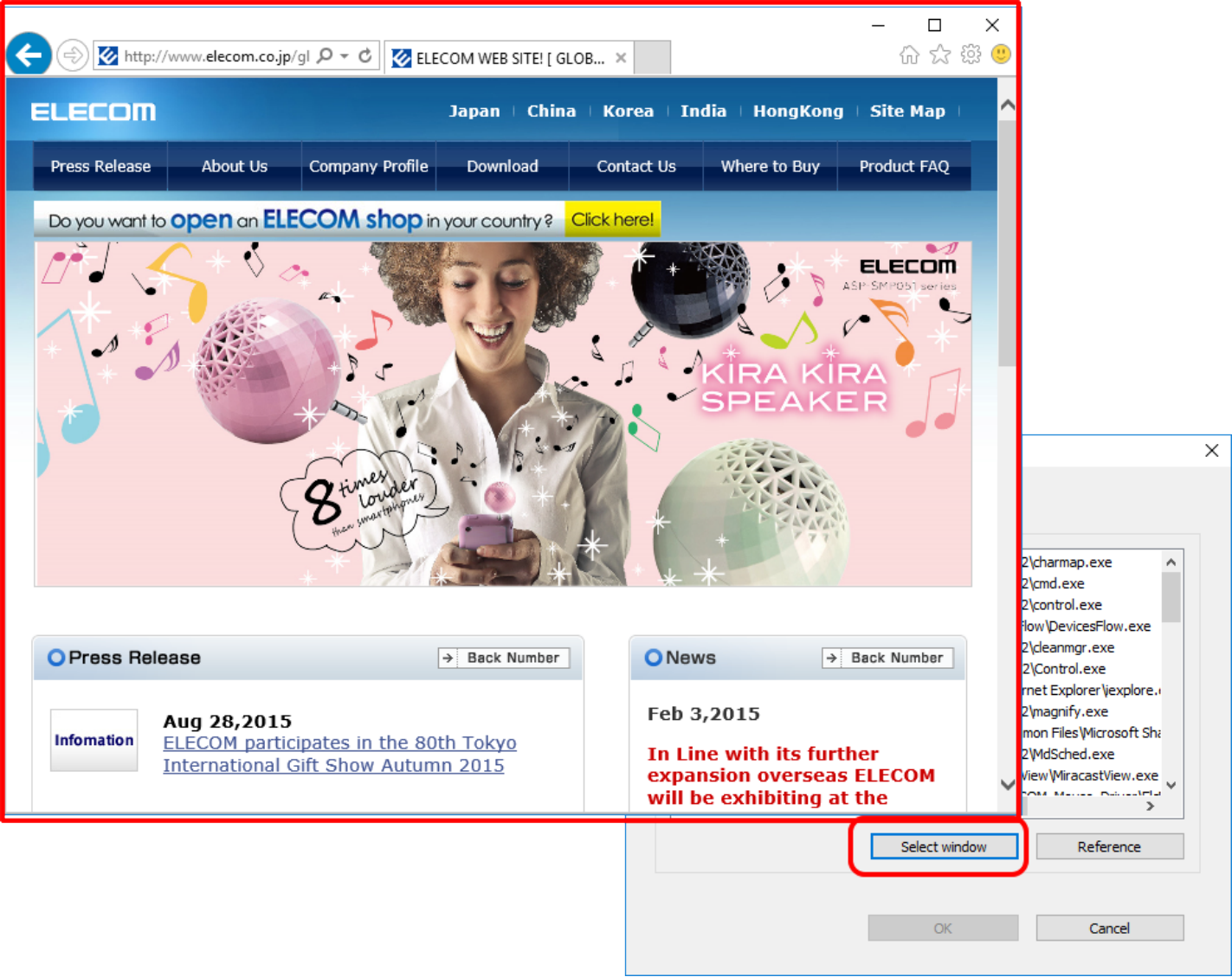
Ex.) Allocating to Internet Explorer®



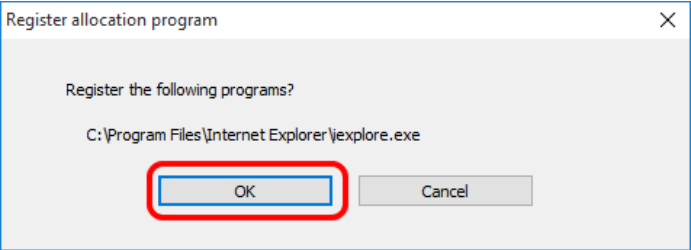
(Other allocation methods)

- Allocating with the [Select window] button  
Activate the program to be used in allocation and while that program is selected click the [Select window] button.

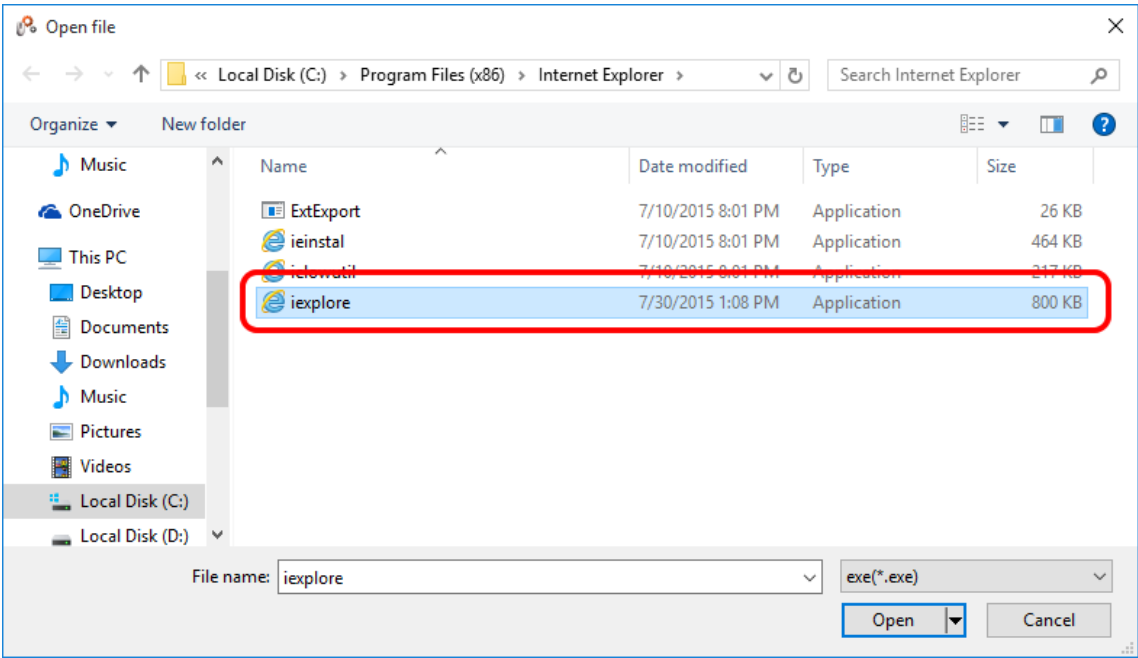




A confirmation message will be displayed. Click the [OK] button.



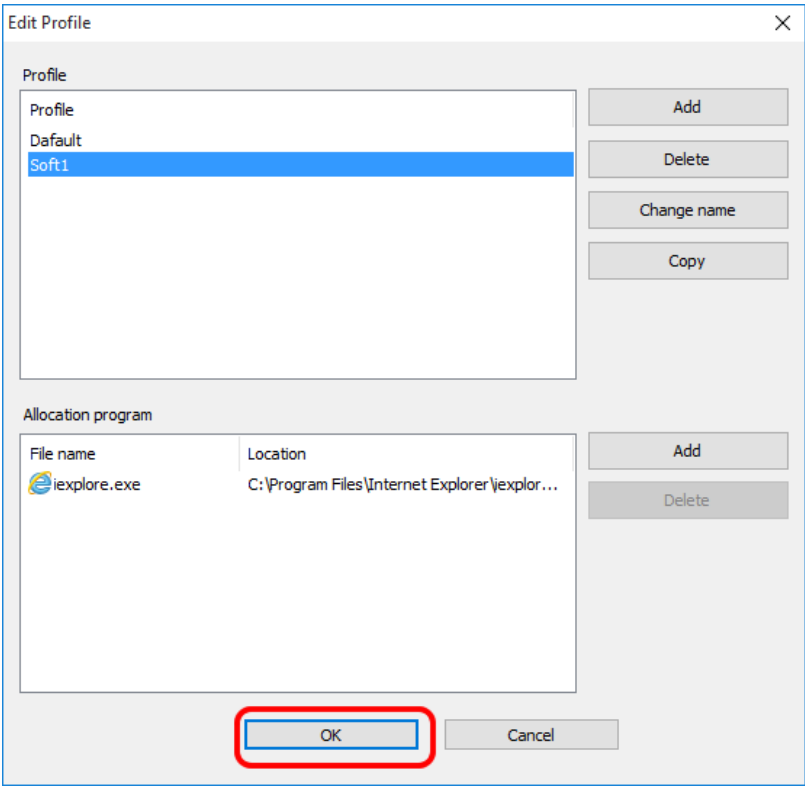
- Allocating with the [Reference] button  
Click the [Reference] button. The open screen will be displayed. Indicate a program and click the [Open] button.



7 To allocate to multiple programs, repeat steps 5 through 6.

\* To delete a program allocation, select a profile from the profile list, select a file name from the list of allocation programs, then click the [Delete] button in [Allocation program].

8 Click the [OK] button in the Edit Profile screen.



9 Click the [OK] button on the setting screen.

The contents that were set in the Edit Profile screen will not be reflected unless the [OK] button on the setting screen is clicked.  
Also, if the [Cancel] button is clicked, settings will not be reflected and the setting screen will end.

Using these procedures, the profile settings are now complete.

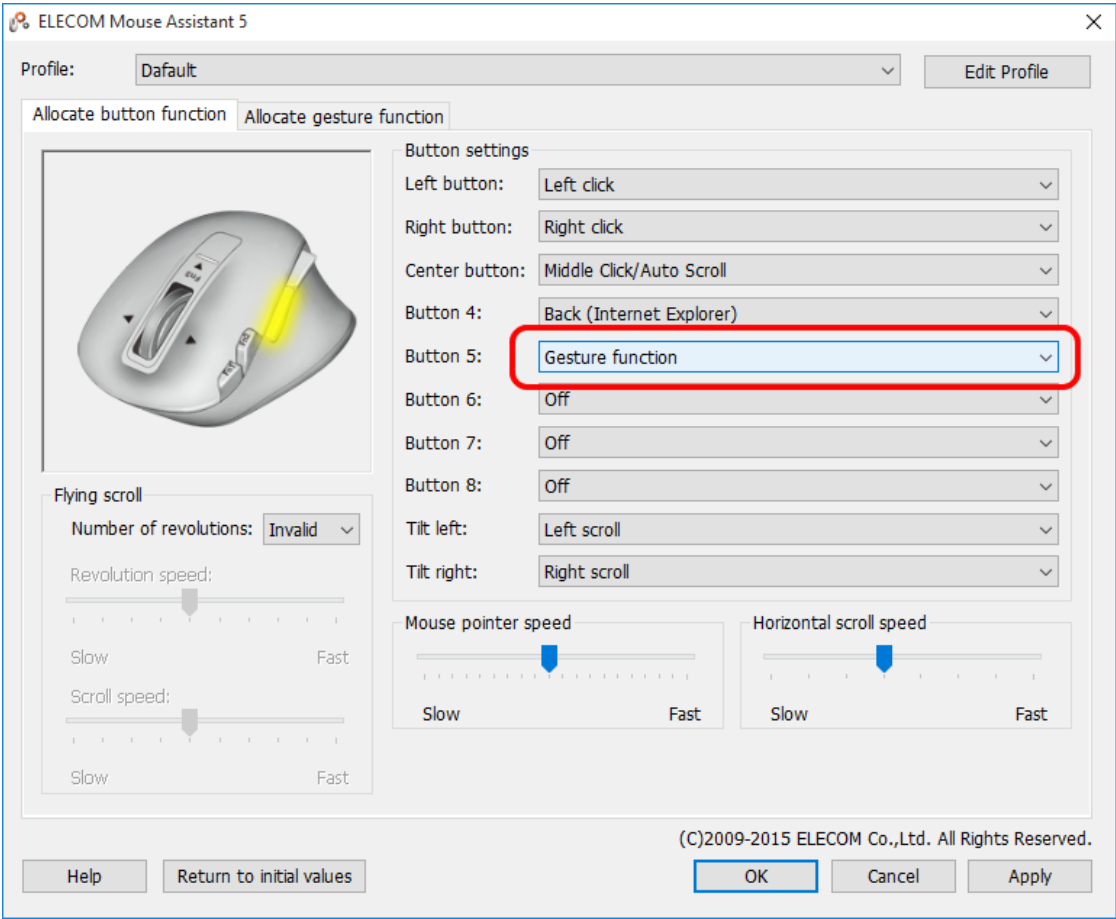
[Return to Contents](#)

## - Setting gesture functions

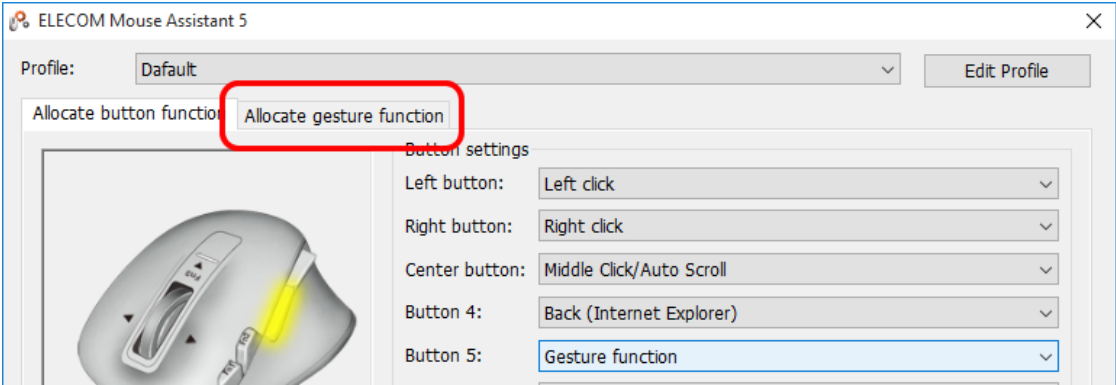
Moving the mouse while pressing a button that was set to a gesture function executes the function assigned to that path.

1 Choose "Gesture function" from the selection box of the button to be set.

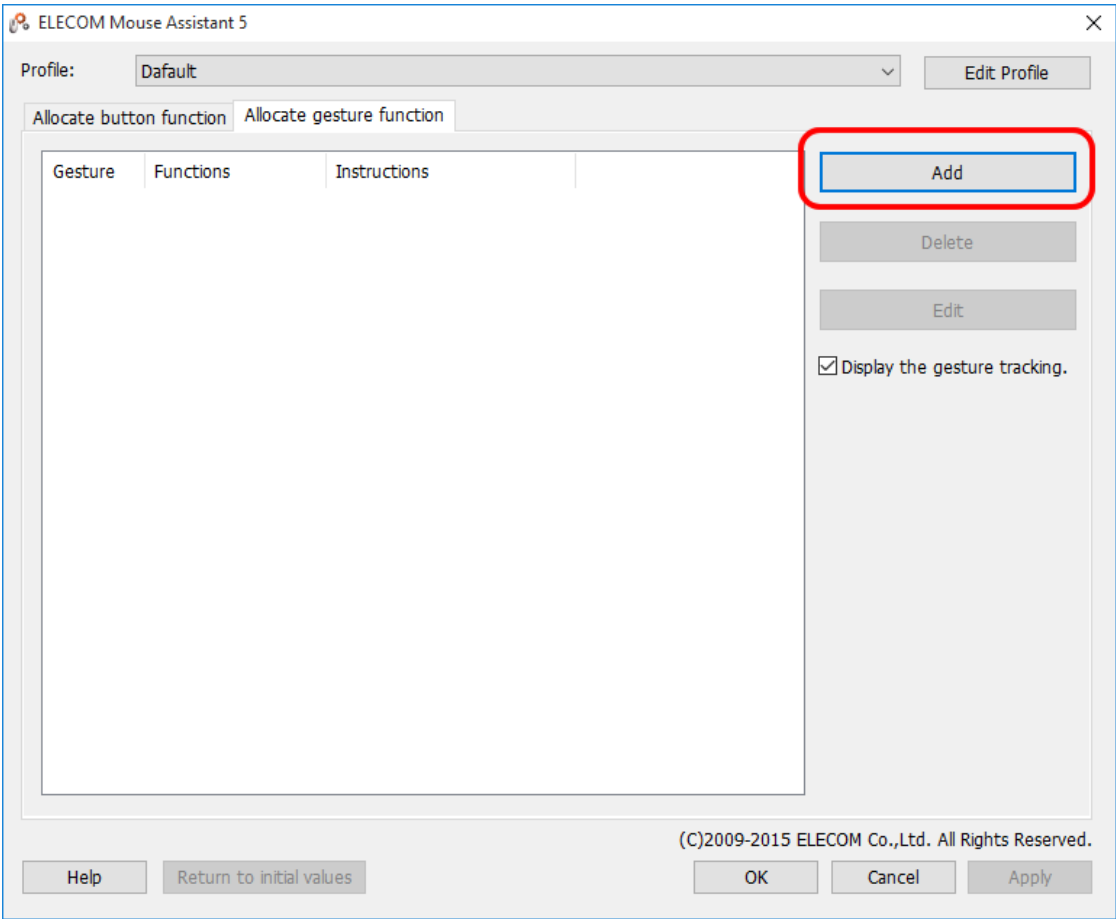
Ex.) Setting button 5 ([Forward] button)



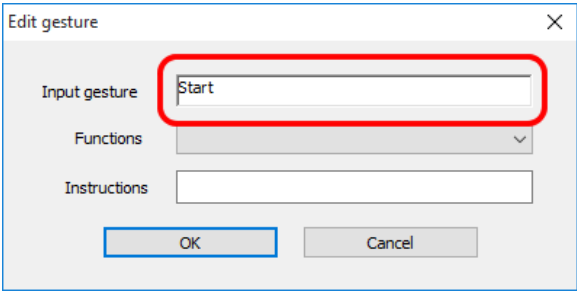
2 Click the [Allocate gesture function] tab.



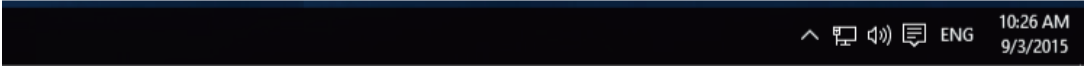
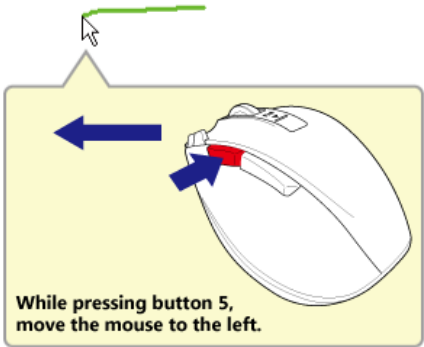
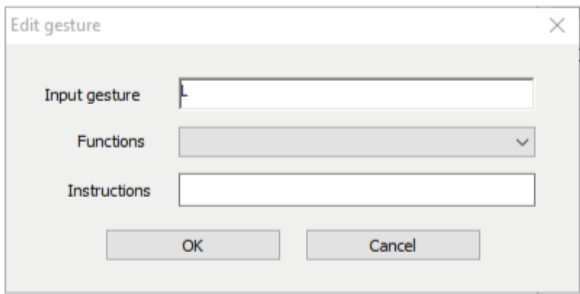
3 Click the [Add] button.



4 Click the "Input gesture" box.



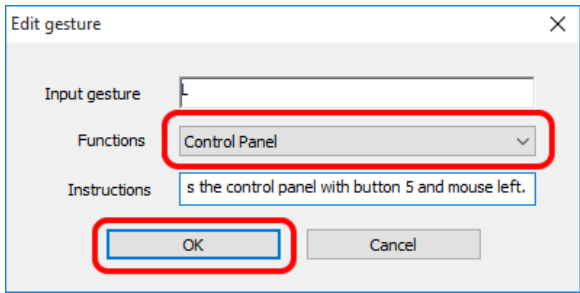
5 Once "Start" has been displayed in "Input gesture", move the mouse while pressing the button that was set in step 1 to input a gesture.  
Ex.) Setting button 5 ([Forward] button) to a left gesture.



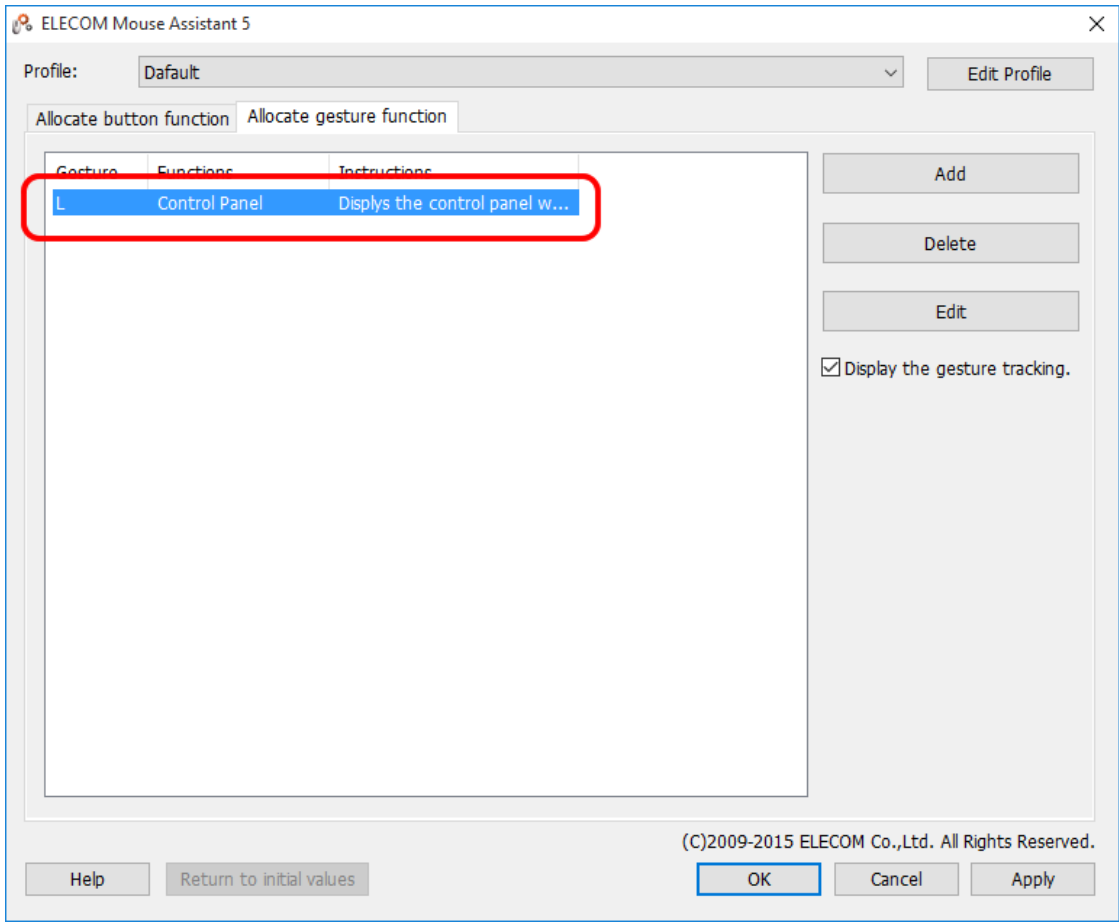
\* In "Input gesture", the path of the mouse can be input as U, D, L, and R gestures.  
\* The path of the mouse will be displayed in yellow-green.  
\* Gestures can be input in a maximum of four directions: Up, down, left, and right.

6 Select the function to be executed from the "Functions" selection box and click the [OK] button.

Ex.) Selecting [Control Panel] in "Functions"



\* Input a brief summary of the gesture function in "Instructions" as necessary.  
The set contents will be displayed on the list.



7 To allocate gesture functions to multiple programs, repeat steps 3 through 6.

Unselecting the box of "Display the gesture tracking." enables to hide the gesture locus at gesture execution.

8 Click the [OK] button on the setting screen.

Using these procedures, the gesture function settings are now complete.

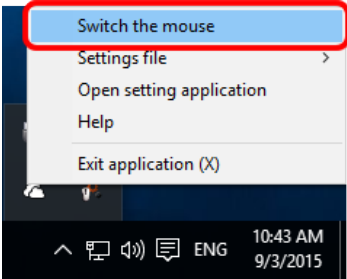
The set contents will not be reflected unless the [OK] button or the [Apply] button is clicked.  
Also, if the [Cancel] button is clicked, settings will not be reflected and the setting screen will end.

[Return to Contents](#)

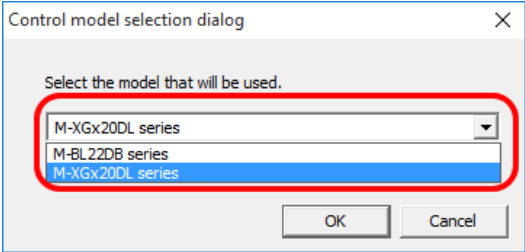
- Mouse selection

With this software, the button allocation, horizontal scrolling, and flying scroll functions are only available with one mouse.  
If two or more [applicable mice](#) are connected, select the mouse that is to be used with this software.

1 Right-click [ELECOM icon] on the task tray or notification area. From the displayed pop-up menu, click [Switch the mouse].



2 Select the mouse for which the button allocation, horizontal scrolling, and flying scroll functions are to be used.



Under [Select the model you are going to use], the series names of the ELECOM mice are displayed.  
From the list in the combo box, select the mouse that will be or is using the button allocation, horizontal scrolling, and flying scroll functions.

3 Click the [OK] button.

The mouse for which the button allocation, horizontal scrolling, and flying scroll functions are to be used has been changed.

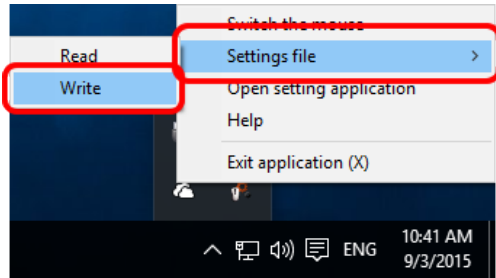
[Return to Contents](#)

- "Writing" and "Reading" the settings files

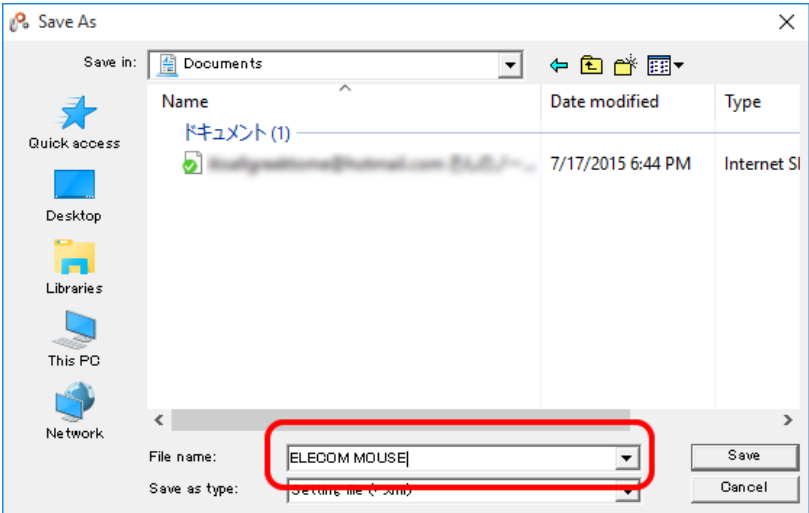
- "Write"

The present settings information, such as function allocation, can be saved in a file.

1 Right-click [ELECOM icon] on the task tray or notification area.  
From the utilities menu, click [Settings file] – [Write].



2 Specify the file name and the destination where it will be saved.



3 Click [Save].

Using the above procedure, the settings information is saved in the specified location.

\* The saved file can also be read from another PC (Macintosh, Windows®) in which the "ELECOM MouseAssistant5" has been installed.

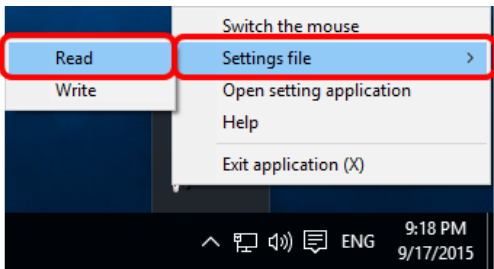
However, [Arbitrary key] settings will not be reflected between Macintosh and Windows®.

[Return to Contents](#)

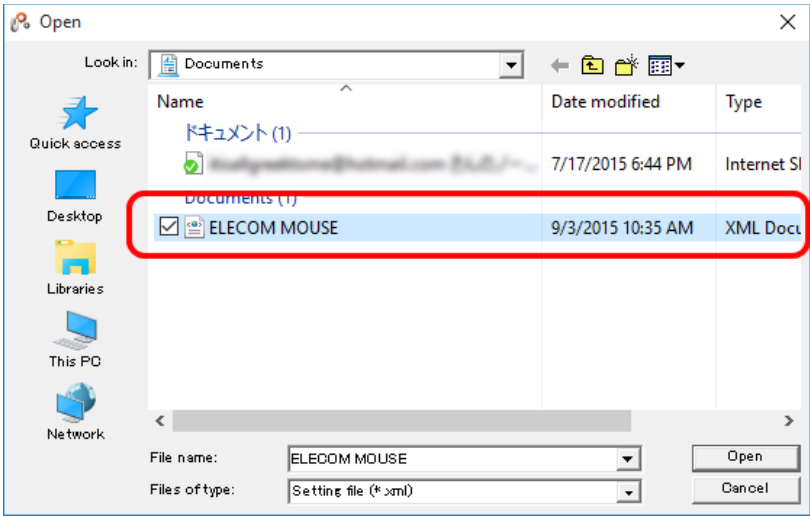
- [Read]

The settings information, such as function allocation, saved with [Write] can be enabled on this PC.

- 1 Right-click [ELECOM icon] on the task tray or notification area. From the utilities menu, click [Settings file] – [Read].



- 2 Select the desired file.



- 3 Click [Open].

Using the above procedure, the saved settings, such as function allocation, become enabled on this PC.

\* The settings that were saved in your PC before or the settings saved in another PC (Macintosh, Windows®) in which the "ELECOM MouseAssistant5" has been installed can also be read.  
However, [Arbitrary key] settings will not be reflected between Macintosh and Windows®.

\* The settings file for a mouse that is different from the selected mouse in the [\[Mouse selection\]](#) screen cannot be read.

## 4. Other Precautions

1. If the tilt function or the allocated functions do not work after restoring from the sleep state, remove the mouse from the USB port and re-insert it.  
If the mouse still does not work, re-start this application.
2. If the mouse is removed from the USB port and reinserted while switching users, a message box may be displayed in an unexpected place.  
In this case, click the [OK] button or select the mouse as usual.
3. Depending on the page displayed with [Internet Explorer], the horizontal scrolling function with the tilt button may or may not work.
4. When this software does not work as expected, do either of the following procedures.
  - (1) Restart this software.
  - (2) Reconnect the mouse and start this software.

[Return to Contents](#)